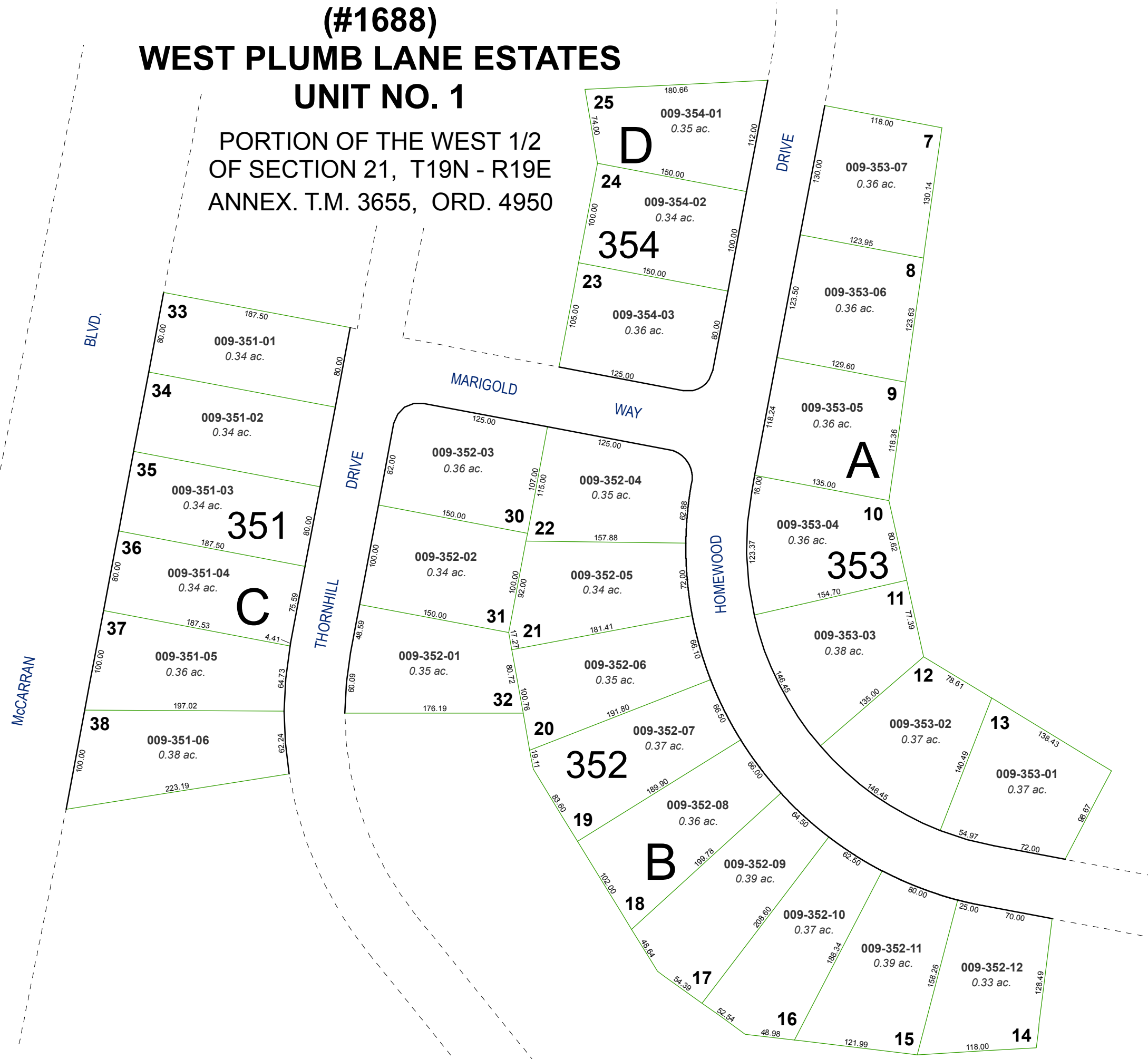


(#1688)
WEST PLUMB LANE ESTATES
UNIT NO. 1

PORTION OF THE WEST 1/2
 OF SECTION 21, T19N - R19E
 ANNEX. T.M. 3655, ORD. 4950

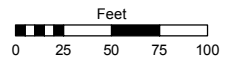


Assessor's Map Number

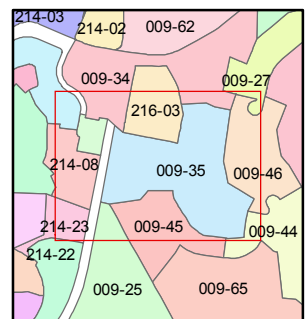
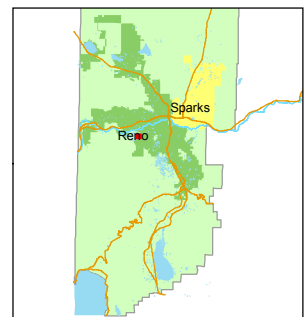
009-35

STATE OF NEVADA
WASHOE COUNTY
ASSESSOR'S OFFICE
 Joshua G. Wilson, Assessor

1001 East Ninth Street
 Building D
 Reno, Nevada 89512
 (775) 328-2231



1 inch = 100 feet



created by: TWT 11/14/2012

last updated: _____

area previously shown on map(s) _____

NOTE: This map was prepared for the use of the Washoe County Assessor for assessment and illustrative purposes only. It does not represent a survey of the premises. No liability is assumed as to the sufficiency or accuracy of the data delineated hereon.