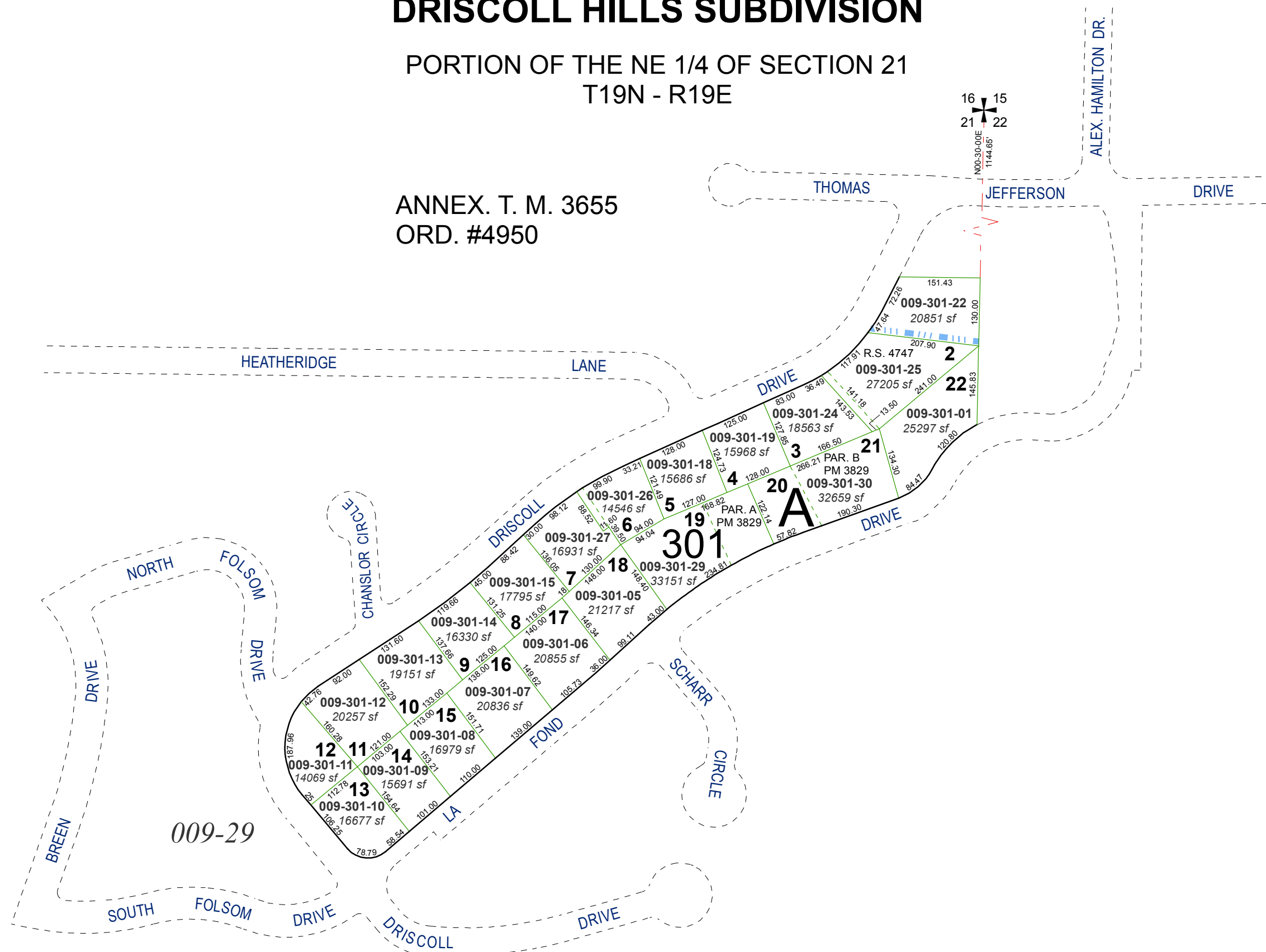


(#685) DRISCOLL HILLS SUBDIVISION

PORTION OF THE NE 1/4 OF SECTION 21
T19N - R19E

ANNEX. T. M. 3655
ORD. #4950

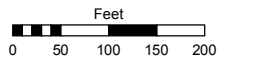


Assessor's Map Number

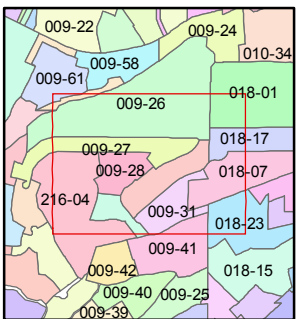
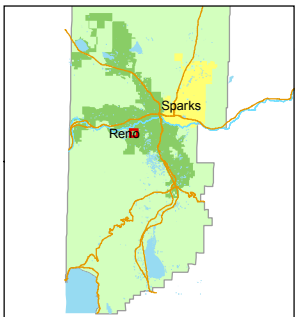
009-30

STATE OF NEVADA
WASHOE COUNTY
ASSESSOR'S OFFICE
Joshua G. Wilson, Assessor

1001 East Ninth Street
Building D
Reno, Nevada 89512
(775) 328-2231



1 inch = 200 feet



created by: TWT 11/13/2012

last updated: _____

area previously shown on map(s) _____

NOTE: This map was prepared for the use of the Washoe County Assessor for assessment and illustrative purposes only. It does not represent a survey of the premises. No liability is assumed as to the sufficiency or accuracy of the data delineated hereon.