

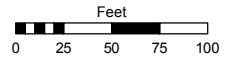
(#945) GLENWOOD ESTATES SUBDIVISION NO. 1

POR. OF THE SE 1/4 OF SEC. 16
T19N - R19E

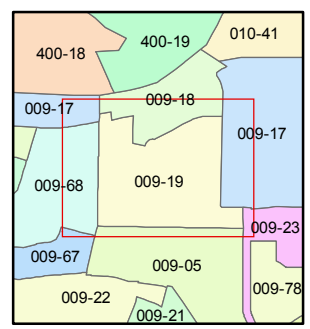
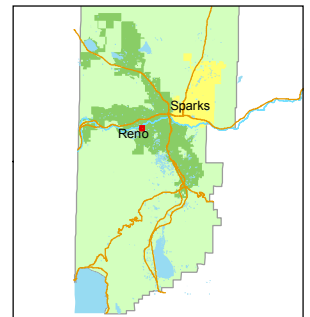
Assessor's Map Number
009-19

STATE OF NEVADA
WASHOE COUNTY
ASSESSOR'S OFFICE
Joshua G. Wilson, Assessor

1001 East Ninth Street
Building D
Reno, Nevada 89512
(775) 328-2231

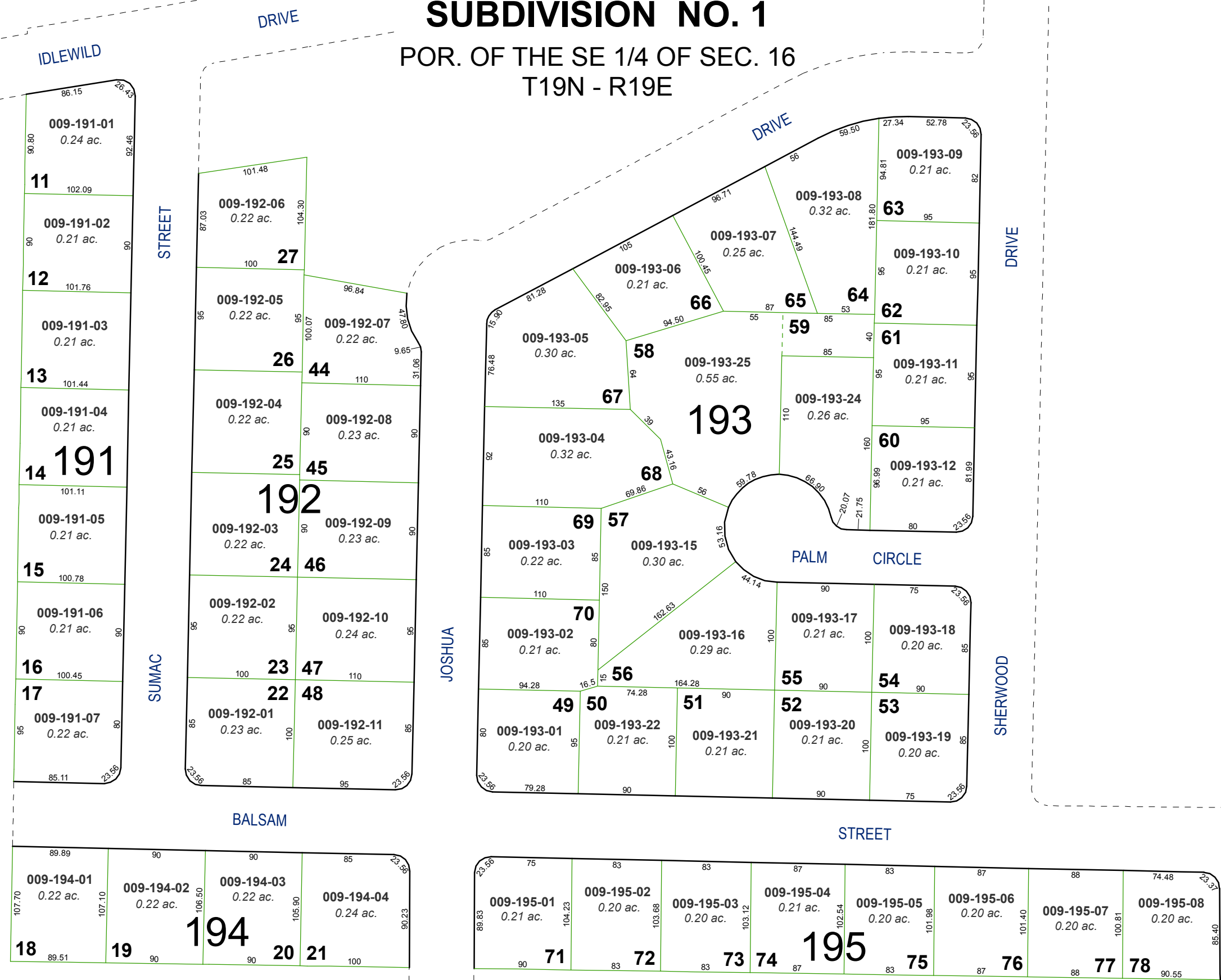


1 inch = 100 feet



created by: TWT 11/2/2012
last updated: _____
area previously shown on map(s) _____

NOTE: This map was prepared for the use of the Washoe County Assessor for assessment and illustrative purposes only. It does not represent a survey of the premises. No liability is assumed as to the sufficiency or accuracy of the data delineated herein.



SHERWOOD DRIVE