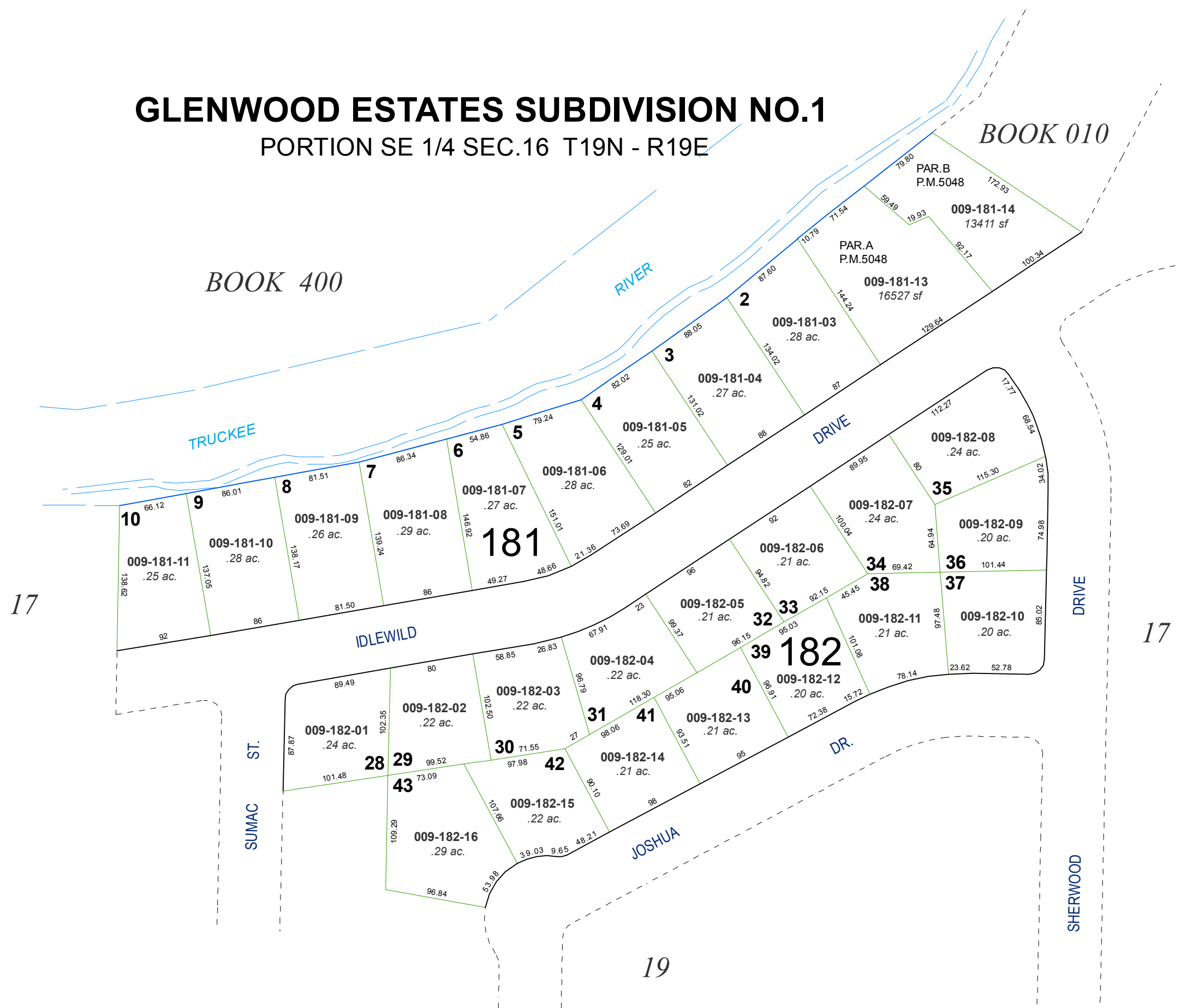


GLENWOOD ESTATES SUBDIVISION NO.1

PORTION SE 1/4 SEC.16 T19N - R19E



Assessor's Map Number

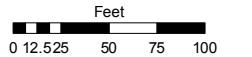
009-18

STATE OF NEVADA
WASHOE COUNTY
ASSESSOR'S OFFICE
 Joshua G. Wilson, Assessor

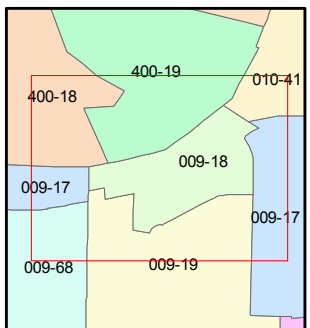
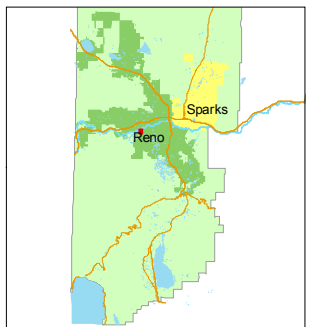
1001 East Ninth Street
 Building D
 Reno, Nevada 89512
 (775) 328-2231



CALIFORNIA AVENUE



1 inch = 100 feet



created by: CFB 06/27/2011

last updated:

area previously shown on map(s)

NOTE: This map was prepared for the use of the Washoe County Assessor for assessment and illustrative purposes only. It does not represent a survey of the premises. No liability is assumed as to the sufficiency or accuracy of the data delineated hereon.