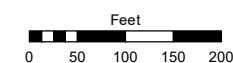
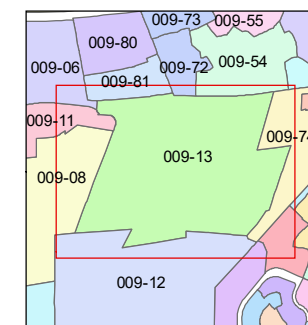
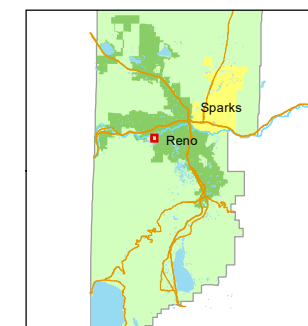


STATE OF NEVADA  
**WASHOE COUNTY**  
ASSESSOR'S OFFICE

1001 East Ninth Street, Building D  
Reno, Nevada 89512  
(775) 328-2231



1 inch = 200 feet



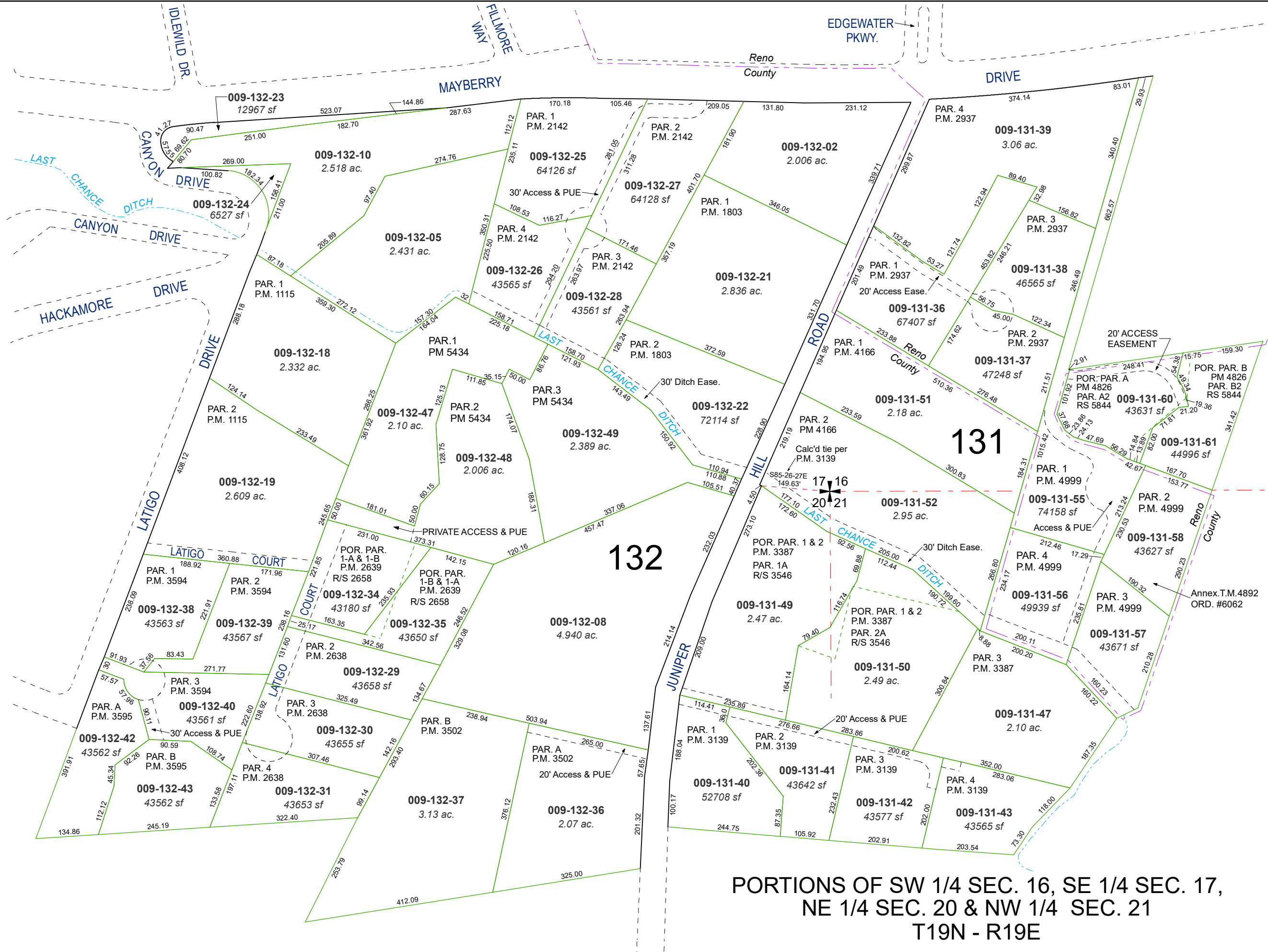
created by: KSB 06/17/10

updated: JMO 06/30/17 SR 11/27/19

area previously shown on map(s):

040-07

NOTE: This map was prepared for the use of the Washoe County Assessor for assessment and illustrative purposes only. It does not represent a survey of the premises. No liability is assumed as to the sufficiency or accuracy of the data delineated hereon.



**PORTIONS OF SW 1/4 SEC. 16, SE 1/4 SEC. 17,  
NE 1/4 SEC. 20 & NW 1/4 SEC. 21  
T19N - R19E  
RECORD OF SURVEY #38 - LLOYD SMITH RANCH**