

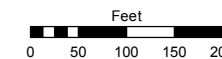
PORTIONS OF THE NE 1/4 SEC. 20 & THE NW 1/4 SEC. 21, T19N - R19E
 RECORD OF SURVEY #38 - LLOYD SMITH RANCH

Assessor's Map Number

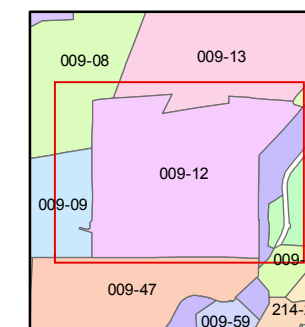
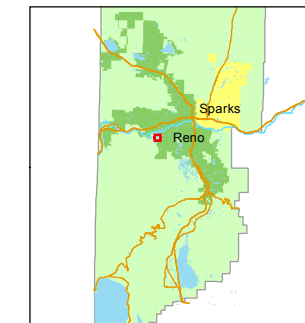
009-12

STATE OF NEVADA
WASHOE COUNTY
 ASSESSOR'S OFFICE
 Michael E. Clark, Assessor

1001 East Ninth Street
 Building D
 Reno, Nevada 89512
 (775) 328-2231



1 inch = 200 feet

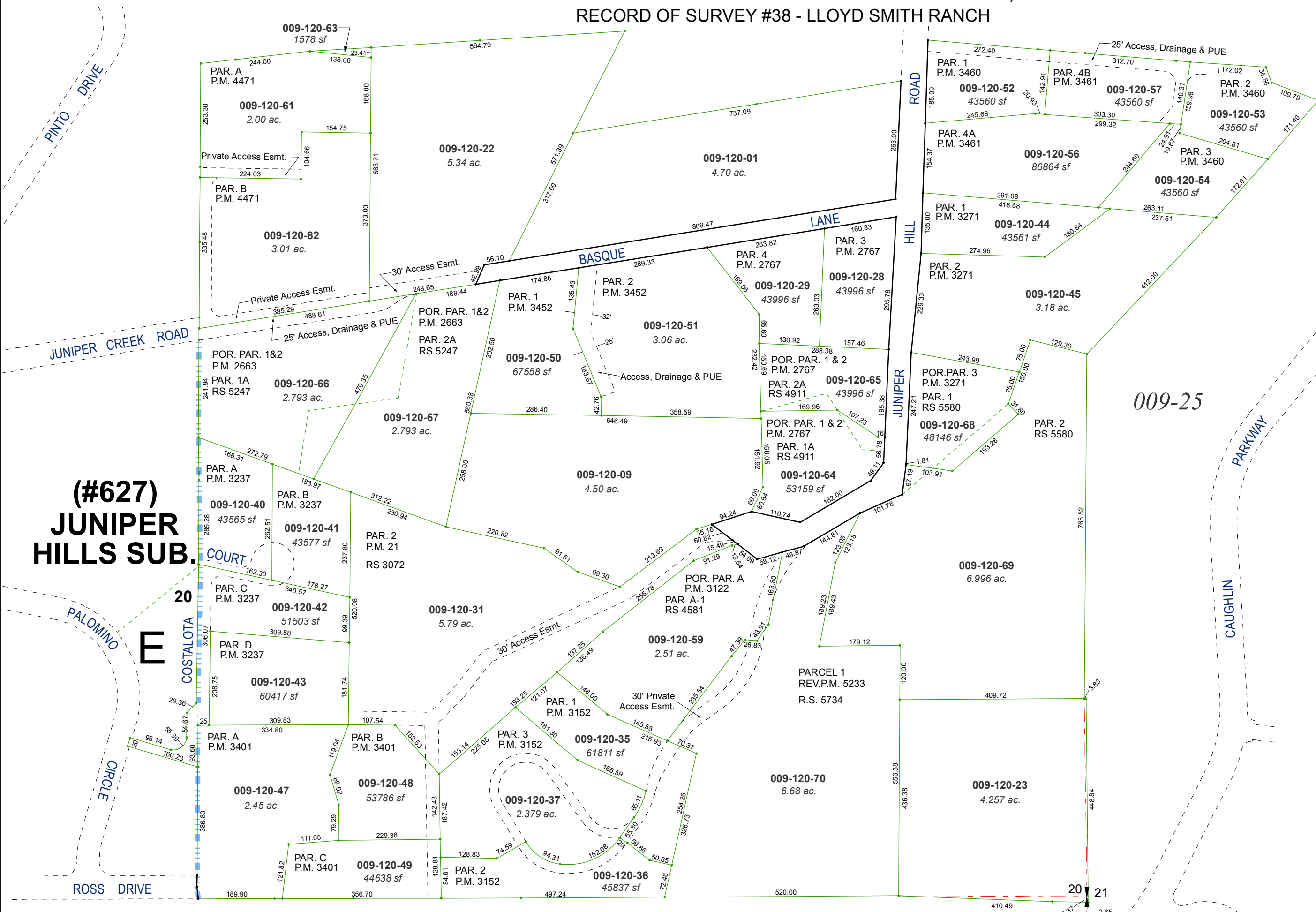


created by: KSB 6/29/2010

last updated: CFB 11/6/15 EMG 5/12/16

area previously shown on map(s)

NOTE: This map was prepared for the use of the Washoe County Assessor for assessment and illustrative purposes only. It does not represent a survey of the premises. No liability is assumed as to the sufficiency or accuracy of the data delineated hereon.



**(#627)
 JUNIPER
 HILLS SUB.**

**20
 E
 COSTALOTA
 COURT**

ROSS DRIVE

009-25

20 21