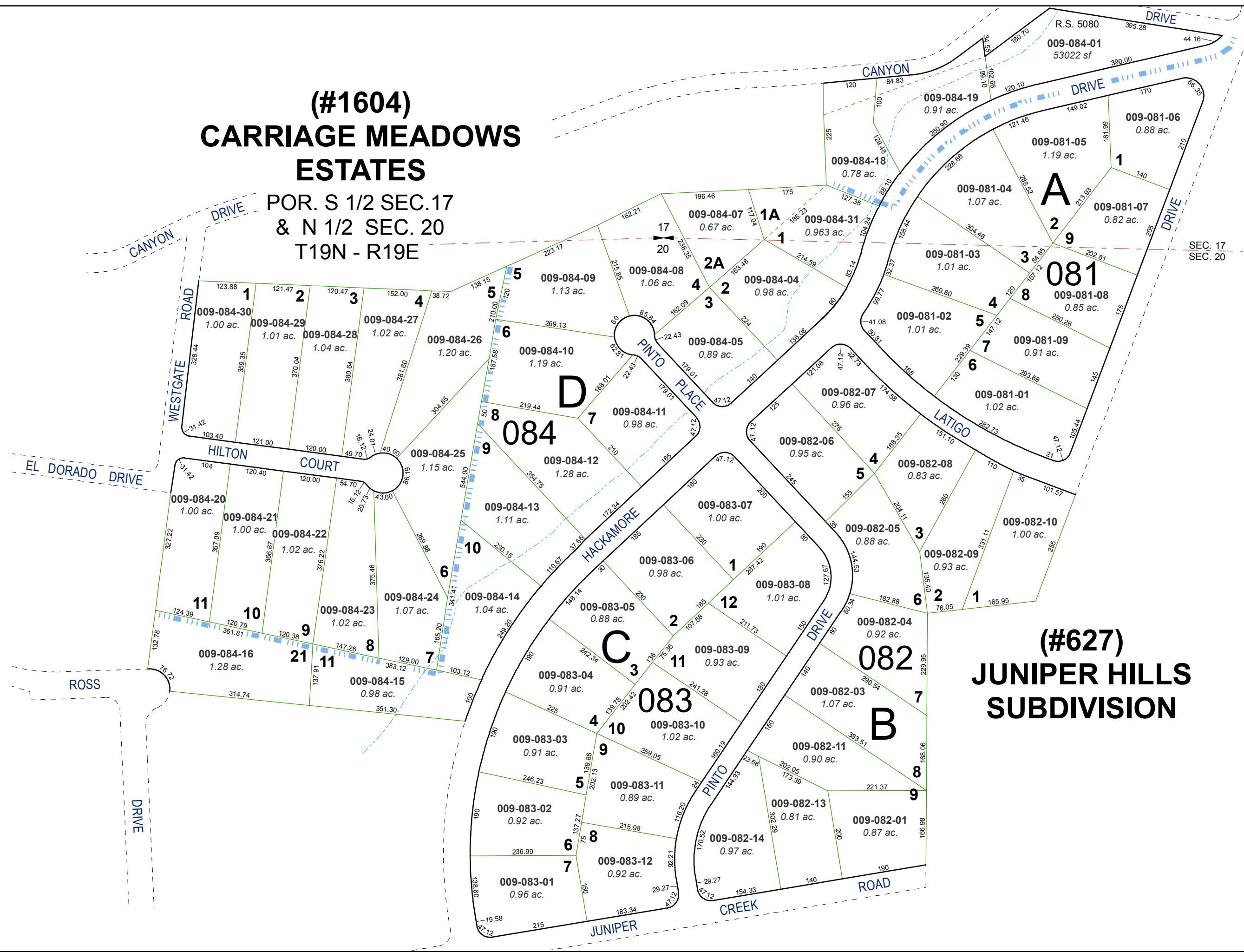


# (#1604) CARRIAGE MEADOWS ESTATES

POR. S 1/2 SEC. 17  
& N 1/2 SEC. 20  
T19N - R19E



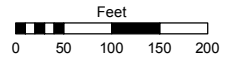
# (#627) JUNIPER HILLS SUBDIVISION

Assessor's Map Number

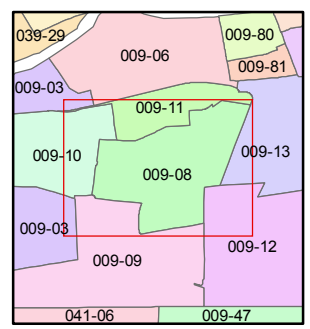
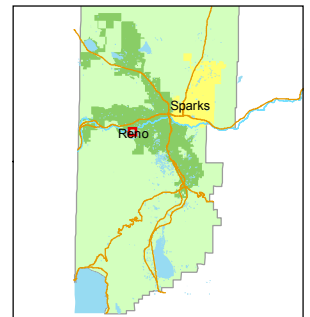
**009-08**

STATE OF NEVADA  
**WASHOE COUNTY**  
ASSESSOR'S OFFICE  
Joshua G. Wilson, Assessor

1001 East Ninth Street  
Building D  
Reno, Nevada 89512  
(775) 328-2231



1 inch = 200 feet



created by: TWT 11/1/2012

last updated: \_\_\_\_\_

area previously shown on map(s) \_\_\_\_\_

NOTE: This map was prepared for the use of the Washoe County Assessor for assessment and illustrative purposes only. It does not represent a survey of the premises. No liability is assumed as to the sufficiency or accuracy of the data delineated hereon.