

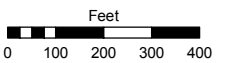
PORTION OF SECTIONS 17, 18, 19 & 20  
T19N - R19E

Assessor's Map Number

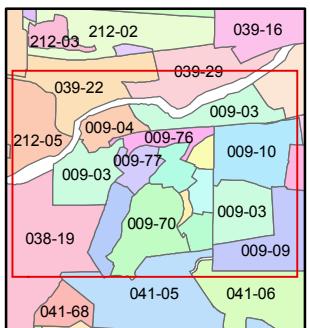
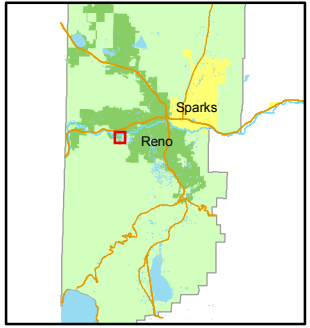
**009-03**

STATE OF NEVADA  
**WASHOE COUNTY**  
**ASSESSOR'S OFFICE**  
Joshua G. Wilson, Assessor

1001 East Ninth Street  
Building D  
Reno, Nevada 89512  
(775) 328-2231



1 inch = 400 feet



created by: KSB 4/28/10

last updated: \_\_\_\_\_

area previously shown on map(s)

009-03, 040-01

NOTE: This map was prepared for the use of the Washoe County Assessor for assessment and illustrative purposes only. It does not represent a survey of the premises. No liability is assumed as to the sufficiency or accuracy of the data delineated hereon.