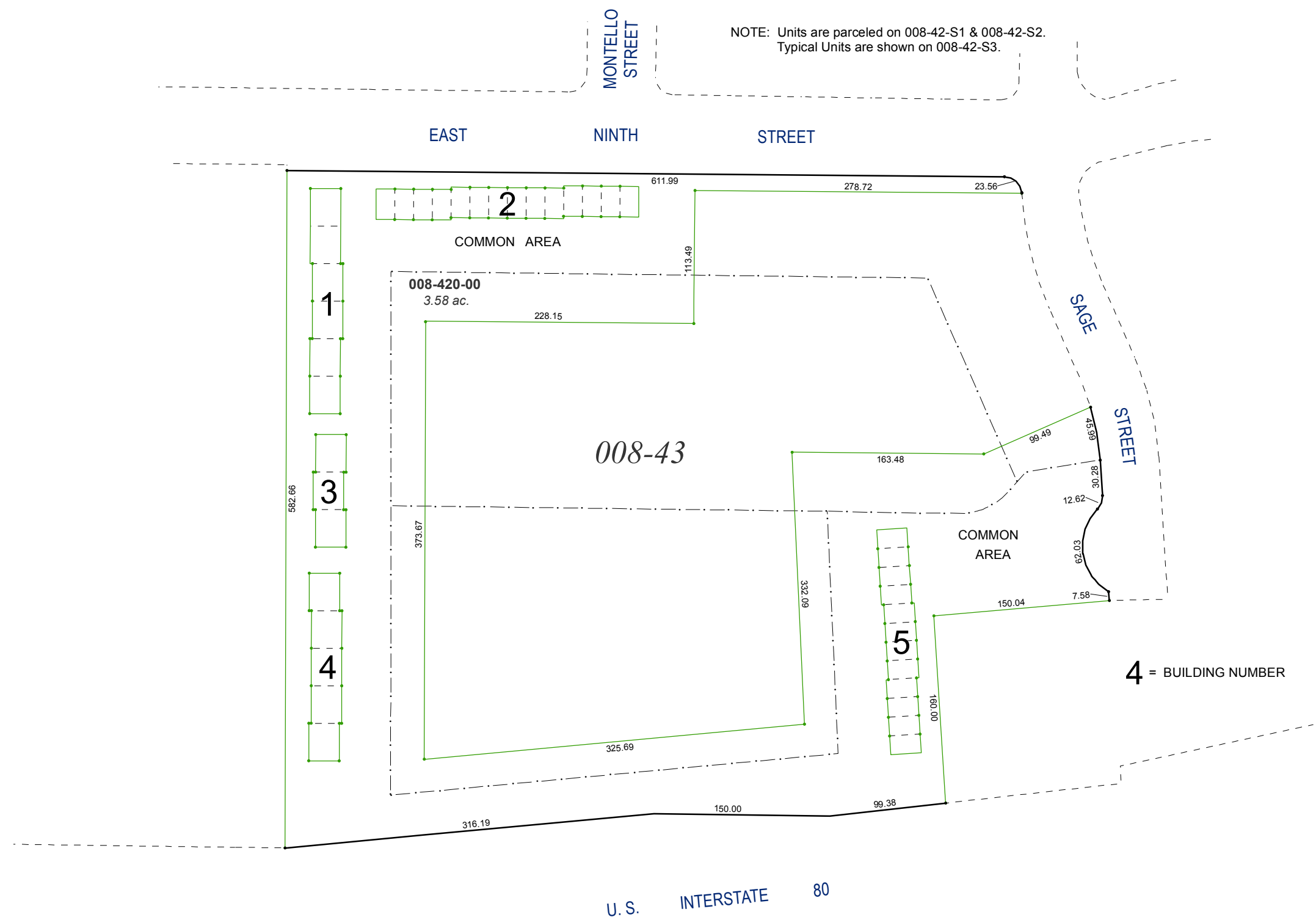


(#1993)
PARK TERRACE UNIT ONE
 A PLANNED UNIT CONDOMINIUM PROJECT
 POR. SE 1/4 SECTION 1, T19N -R19E

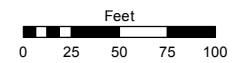
AN UNDIVIDED 1/68th INTEREST EACH
 IN COMMON AREA



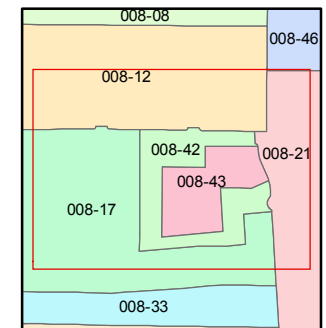
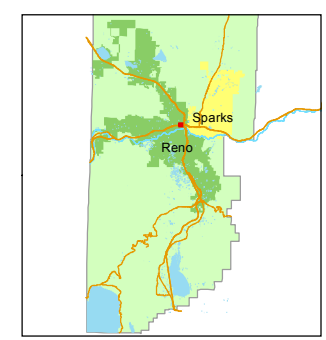
Assessor's Map Number
008-42

STATE OF NEVADA
WASHOE COUNTY
 ASSESSOR'S OFFICE
 Joshua G. Wilson, Assessor

1001 East Ninth Street
 Building D
 Reno, Nevada 89512
 (775) 328-2231



1 inch = 100 feet



created by: CFB 05/02/2014

last updated: _____

area previously shown on map(s)

NOTE: This map was prepared for the use of the Washoe County Assessor for assessment and illustrative purposes only. It does not represent a survey of the premises. No liability is assumed as to the sufficiency or accuracy of the data delineated herein.

U. S. INTERSTATE 80