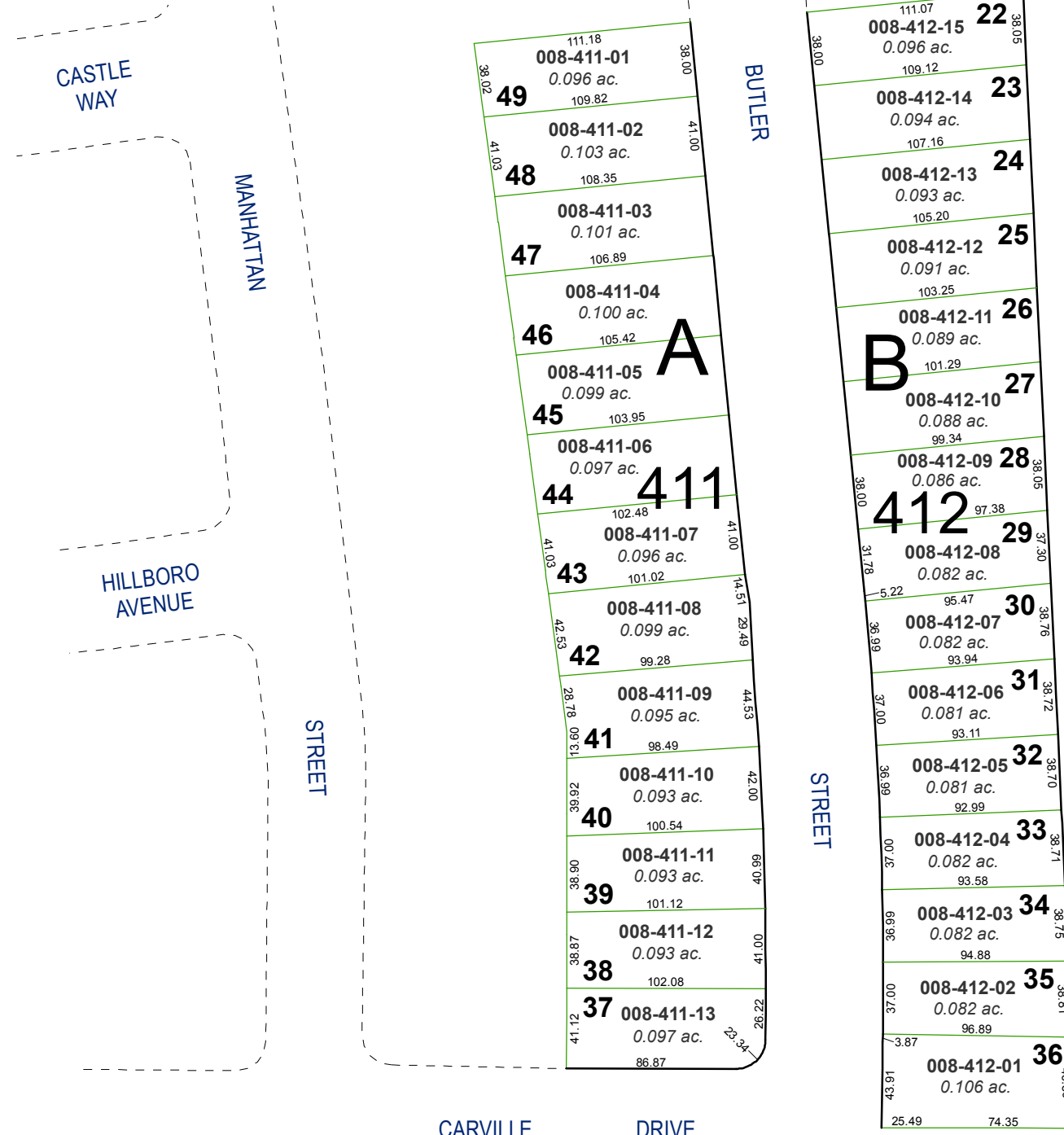


**(#1792)**  
**SHERMAN PARK ESTATES**

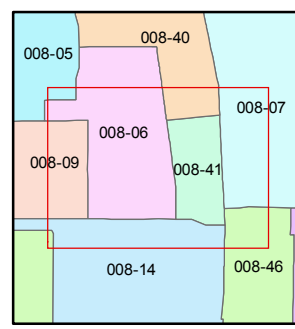
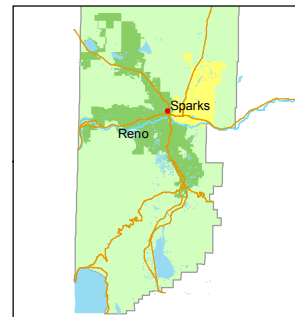
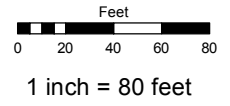
A DENSITY SUBDIVISION  
 POR. NW 1/4 SEC. 1, T19N - R19E &  
 POR. NE 1/4 SEC. 6, T19N - R20E



Assessor's Map Number  
**008-41**

STATE OF NEVADA  
**WASHOE COUNTY**  
 ASSESSOR'S OFFICE  
 Joshua G. Wilson, Assessor

1001 East Ninth Street  
 Building D  
 Reno, Nevada 89512  
 (775) 328-2231



created by: TWT 10/17/2012  
 last updated: \_\_\_\_\_  
 area previously shown on map(s) \_\_\_\_\_

NOTE: This map was prepared for the use of the Washoe County Assessor for assessment and illustrative purposes only. It does not represent a survey of the premises. No liability is assumed as to the sufficiency or accuracy of the data delineated hereon.