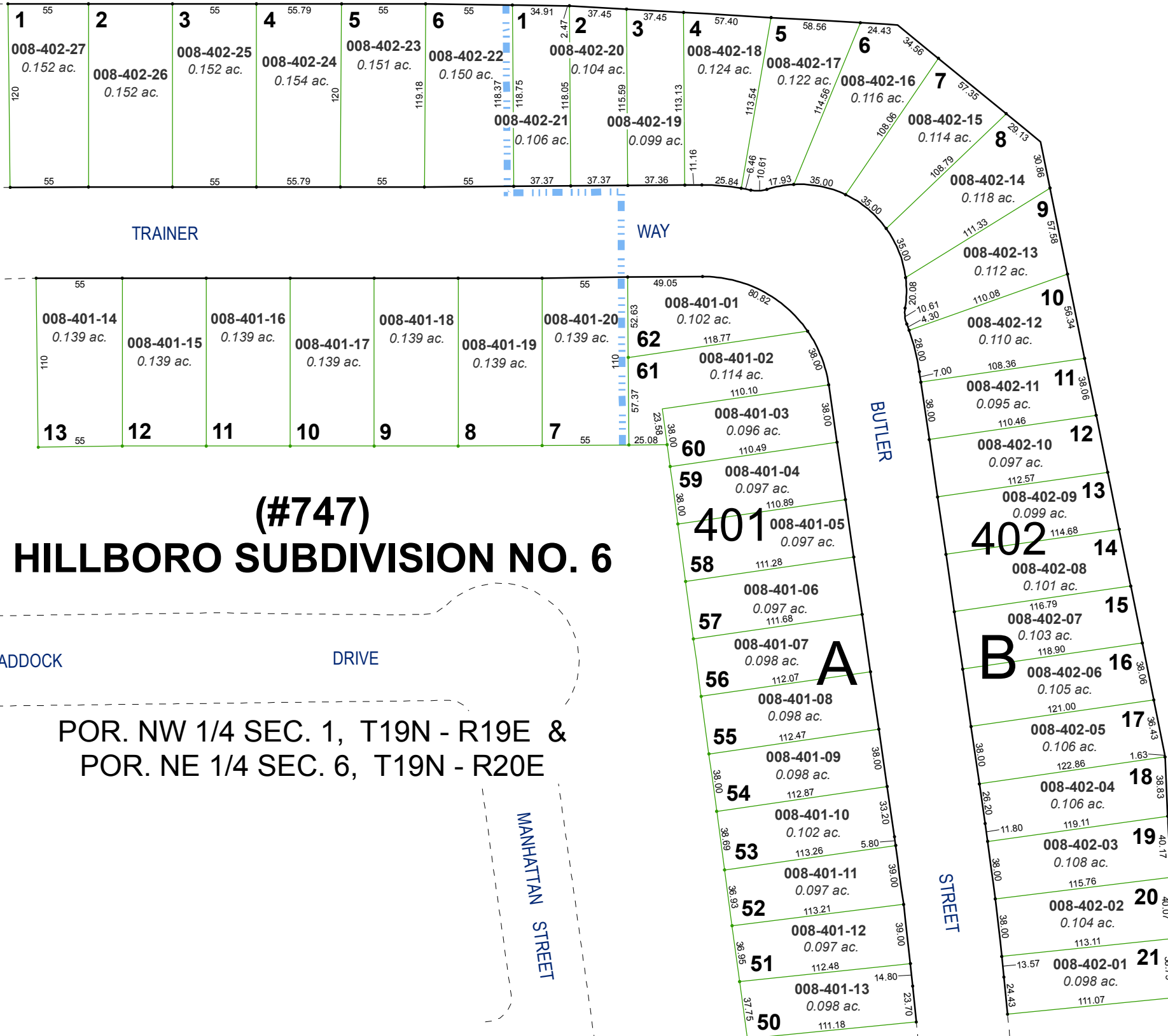


(#1792) SHERMAN PARK ESTATES

A DENSITY SUBDIVISION

ODDIE

BOULEVARD



(#747) HILLBORO SUBDIVISION NO. 6

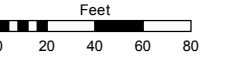
POR. NW 1/4 SEC. 1, T19N - R19E &
POR. NE 1/4 SEC. 6, T19N - R20E

Assessor's Map Number

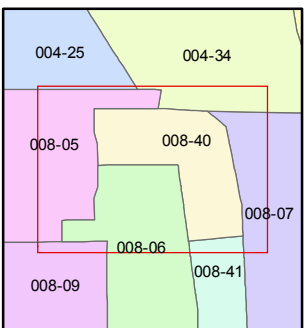
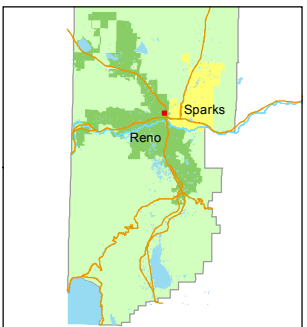
008-40

STATE OF NEVADA
WASHOE COUNTY
ASSESSOR'S OFFICE
Joshua G. Wilson, Assessor

1001 East Ninth Street
Building D
Reno, Nevada 89512
(775) 328-2231



1 inch = 80 feet



created by: TWT 10/18/2012

last updated: _____

area previously shown on map(s) _____

NOTE: This map was prepared for the use of the Washoe County Assessor for assessment and illustrative purposes only. It does not represent a survey of the premises. No liability is assumed as to the sufficiency or accuracy of the data delineated hereon.