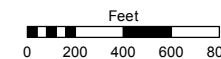


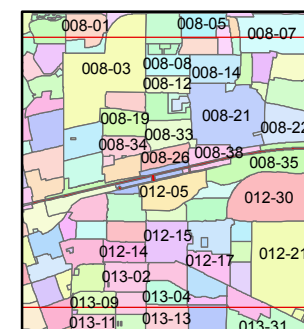
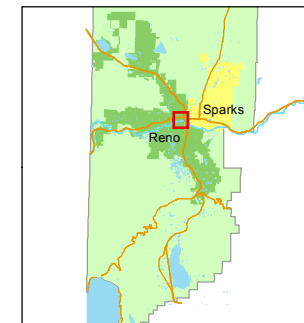
PORTION OF THE NW 1/4 SECTION 7, T19N - R20E  
PORTION OF THE NE 1/4 SECTION 11, T19N, R19E  
PORTION OF THE N 1/2 SECTION 12, T19N - R19E

STATE OF NEVADA  
**WASHOE COUNTY**  
ASSESSOR'S OFFICE  
Joshua G. Wilson, Assessor

1001 East Ninth Street  
Building D  
Reno, Nevada 89512  
(775) 328-2231



1 inch = 800 feet



created by: CFB 04/17/2012

last updated: CFB 05/25/2012

area previously shown on map(s)

NOTE: This map was prepared for the use of the Washoe County Assessor for assessment and illustrative purposes only. It does not represent a survey of the premises. No liability is assumed as to the sufficiency or accuracy of the data delineated hereon.

