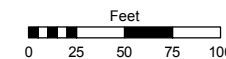


Assessor's Map Number

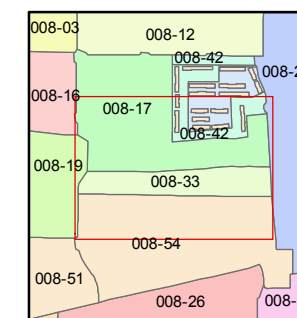
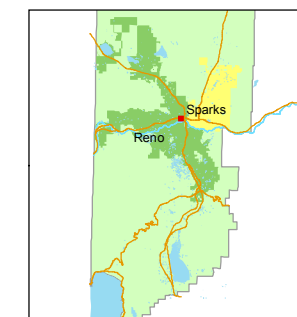
008-33

STATE OF NEVADA
WASHOE COUNTY
ASSESSOR'S OFFICE
Joshua G. Wilson, Assessor

1001 East Ninth Street
Building D
Reno, Nevada 89512
(775) 328-2231



1 inch = 100 feet



created by: TWT 5/7/2014

last updated: _____

area previously shown on map(s) _____

NOTE: This map was prepared for the use of the Washoe County Assessor for assessment and illustrative purposes only. It does not represent a survey of the premises. No liability is assumed as to the sufficiency or accuracy of the data delineated hereon.

(#58)
LEETE SYNDICATE (UNOFFICIAL)

PORTION OF THE SE 1/4 OF SECTION 1
T19N - R19E

STREET

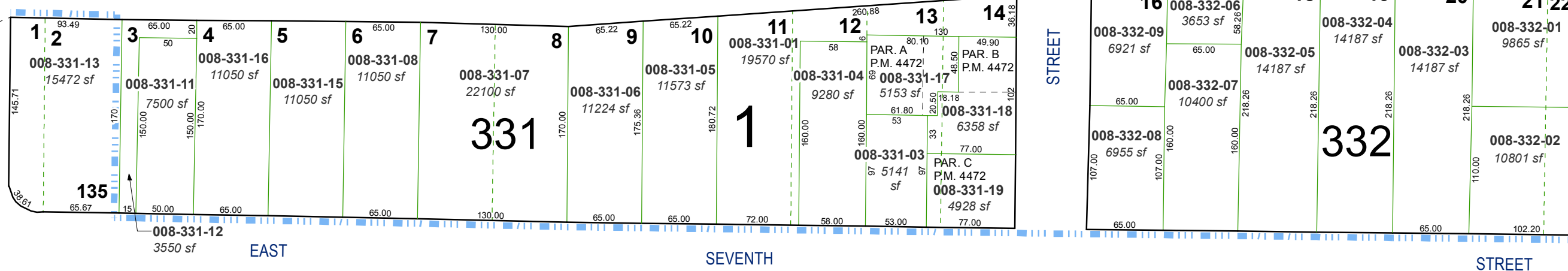
**POR. LOT 135
DOWNTOWN
SERVICE
CENTER
(#1378-1379)**

INTERSTATE

80

SUTRO

STREET



EAST

SEVENTH

STREET

MONTELLO