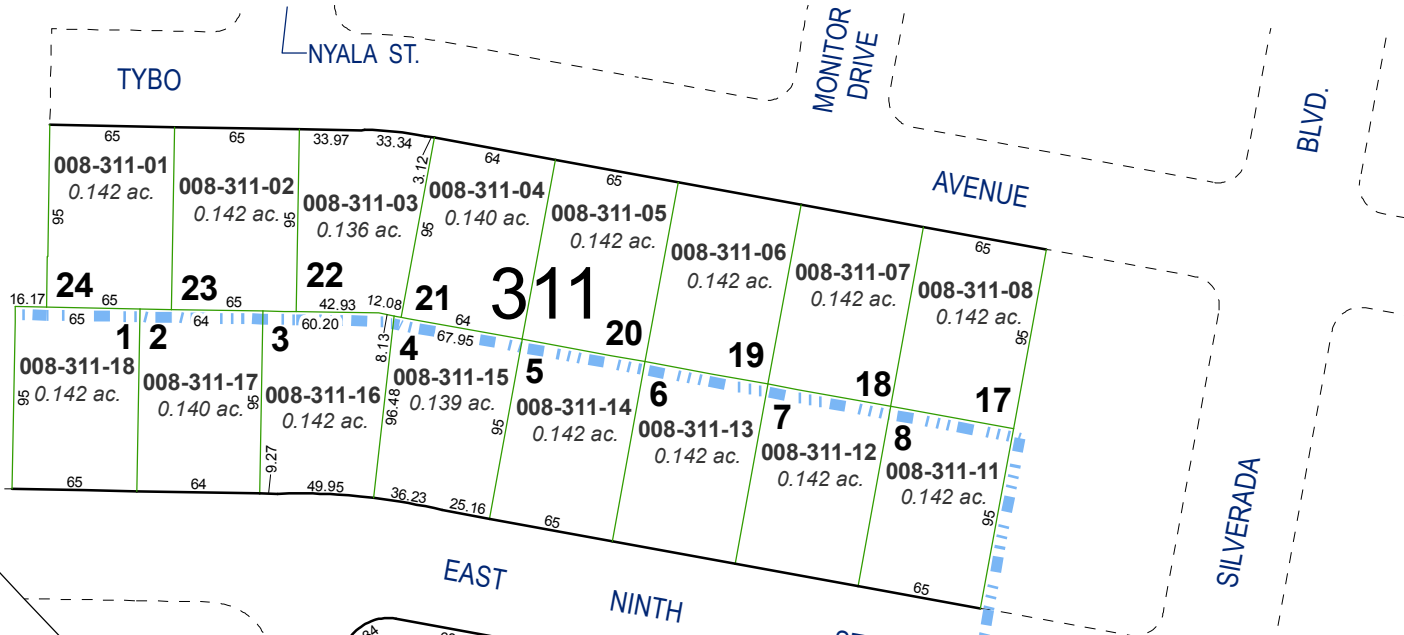
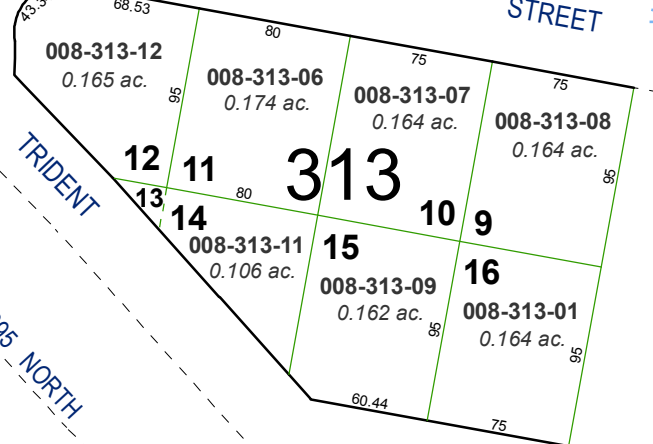


(#753)
SILVERADA SUBDIVISION NO. 5



(#801)
SILVERADA SUBDIVISION NO. 6

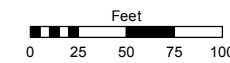
PORTION OF THE SE 1/4 OF SECTION 6
 T19N - R20E



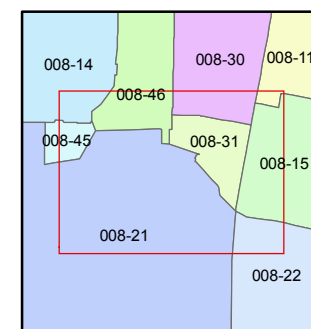
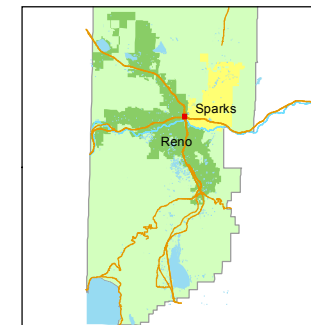
Assessor's Map Number
008-31

STATE OF NEVADA
WASHOE COUNTY
ASSESSOR'S OFFICE
 Joshua G. Wilson, Assessor

1001 East Ninth Street
 Building D
 Reno, Nevada 89512
 (775) 328-2231



1 inch = 100 feet



created by: TWT 10/17/2012

last updated: _____

area previously shown on map(s)

NOTE: This map was prepared for the use of the Washoe County Assessor for assessment and illustrative purposes only. It does not represent a survey of the premises. No liability is assumed as to the sufficiency or accuracy of the data delineated hereon.