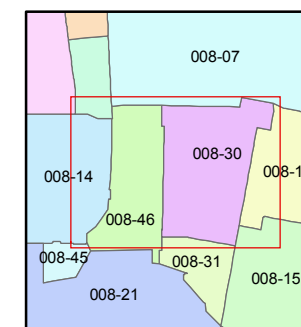
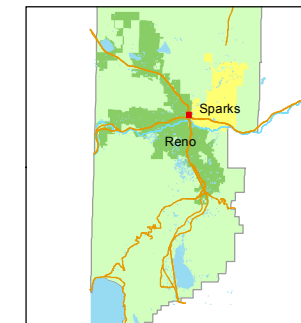


1 inch = 100 feet



created by: TWT 10/16/2012

last updated:

area previously shown on map(s)

NOTE: This map was prepared for the use of the Washoe County Assessor for assessment and illustrative purposes only. It does not represent a survey of the premises. No liability is assumed as to the sufficiency or accuracy of the data delineated hereon.

**(#753)  
SILVERADA  
SUBDIVISION  
NO. 5**  
POR. OF EAST 1/2  
OF SEC. 6  
T19N - R20E

U.S. 395  
FREIGHTWAY  
MEDIAN

OFF RAMP TO I-80

ON RAMP FROM I-80

EAST-WEST 1/4 SECTION 6

36 <sup>65</sup> 008-301-08 0.142 ac.	37 008-301-07 0.142 ac.	38 008-301-06 0.142 ac.	39 008-301-05 0.142 ac.	40 008-301-04 0.142 ac.	41 <sup>65</sup> 008-301-03 0.142 ac.	42 <sup>75.05</sup> 008-301-02 0.161 ac.	43 <sup>85.07</sup> 008-301-01 0.175 ac.
---	-------------------------------	-------------------------------	-------------------------------	-------------------------------	---	--	--

**301**

MANNINGTON STREET

008-302-01 0.168 ac.	008-303-01 0.185 ac.	008-303-02 0.185 ac.	008-303-03 0.190 ac.	008-303-04 0.161 ac.
35 008-302-02 0.140 ac.	68 008-303-27 0.204 ac.	69 008-303-26 0.203 ac.	70 008-303-25 0.243 ac.	44 008-303-05 0.144 ac.
34 008-302-03 0.140 ac.	67 008-303-24 0.204 ac.	66 008-303-23 0.168 ac.	65 008-303-06 0.144 ac.	45 008-303-07 0.144 ac.
33 008-302-04 0.140 ac.	62 008-303-22 0.204 ac.	63 008-303-21 0.174 ac.	64 008-303-20 0.239 ac.	46 008-303-08 0.144 ac.
32 008-302-05 0.140 ac.	31 008-302-06 0.140 ac.	30 008-302-07 0.141 ac.	29 008-302-08 0.142 ac.	47 008-303-09 0.144 ac.
31 008-302-06 0.140 ac.	30 008-302-07 0.141 ac.	29 008-302-08 0.142 ac.	28 008-302-09 0.142 ac.	48 008-303-10 0.144 ac.
30 008-302-07 0.141 ac.	29 008-302-08 0.142 ac.	28 008-302-09 0.142 ac.	27 008-302-10 0.142 ac.	49 008-303-11 0.144 ac.
29 008-302-08 0.142 ac.	28 008-302-09 0.142 ac.	27 008-302-10 0.142 ac.	26 008-302-11 0.168 ac.	50 008-303-12 0.144 ac.
28 008-302-09 0.142 ac.	27 008-302-10 0.142 ac.	26 008-302-11 0.168 ac.	25 008-303-17 0.171 ac.	51 008-303-13 0.144 ac.
27 008-302-10 0.142 ac.	26 008-302-11 0.168 ac.	25 008-303-16 0.168 ac.	24 008-303-15 0.147 ac.	52 008-303-14 0.174 ac.
26 008-302-11 0.168 ac.	25 008-303-17 0.171 ac.	24 008-303-16 0.168 ac.	23 008-303-15 0.147 ac.	53 008-303-14 0.174 ac.
25 008-302-11 0.168 ac.	24 008-303-17 0.171 ac.	23 008-303-16 0.168 ac.	22 008-303-15 0.147 ac.	54 008-303-14 0.174 ac.

TYBO AVENUE

CARVILLE DRIVE

008-304-17 0.142 ac.	008-304-01 0.142 ac.
008-304-16 0.142 ac.	008-304-02 0.142 ac.
008-304-15 0.140 ac.	008-304-14 0.140 ac.
008-304-14 0.140 ac.	008-304-13 0.140 ac.
008-304-12 0.140 ac.	008-304-11 0.140 ac.
008-304-11 0.140 ac.	008-304-10 0.140 ac.
008-304-09 0.140 ac.	008-304-08 0.140 ac.
008-304-08 0.140 ac.	008-304-07 0.140 ac.
008-304-07 0.140 ac.	008-304-06 0.140 ac.
008-304-06 0.140 ac.	008-304-05 0.140 ac.
008-304-05 0.140 ac.	008-304-04 0.207 ac.

SILVERADA AVENUE

STREET

DRIVE

TOM SAWYER DRIVE

BOULEVARD

HIKO AVENUE

DYER WAY

NYALA

MONITOR