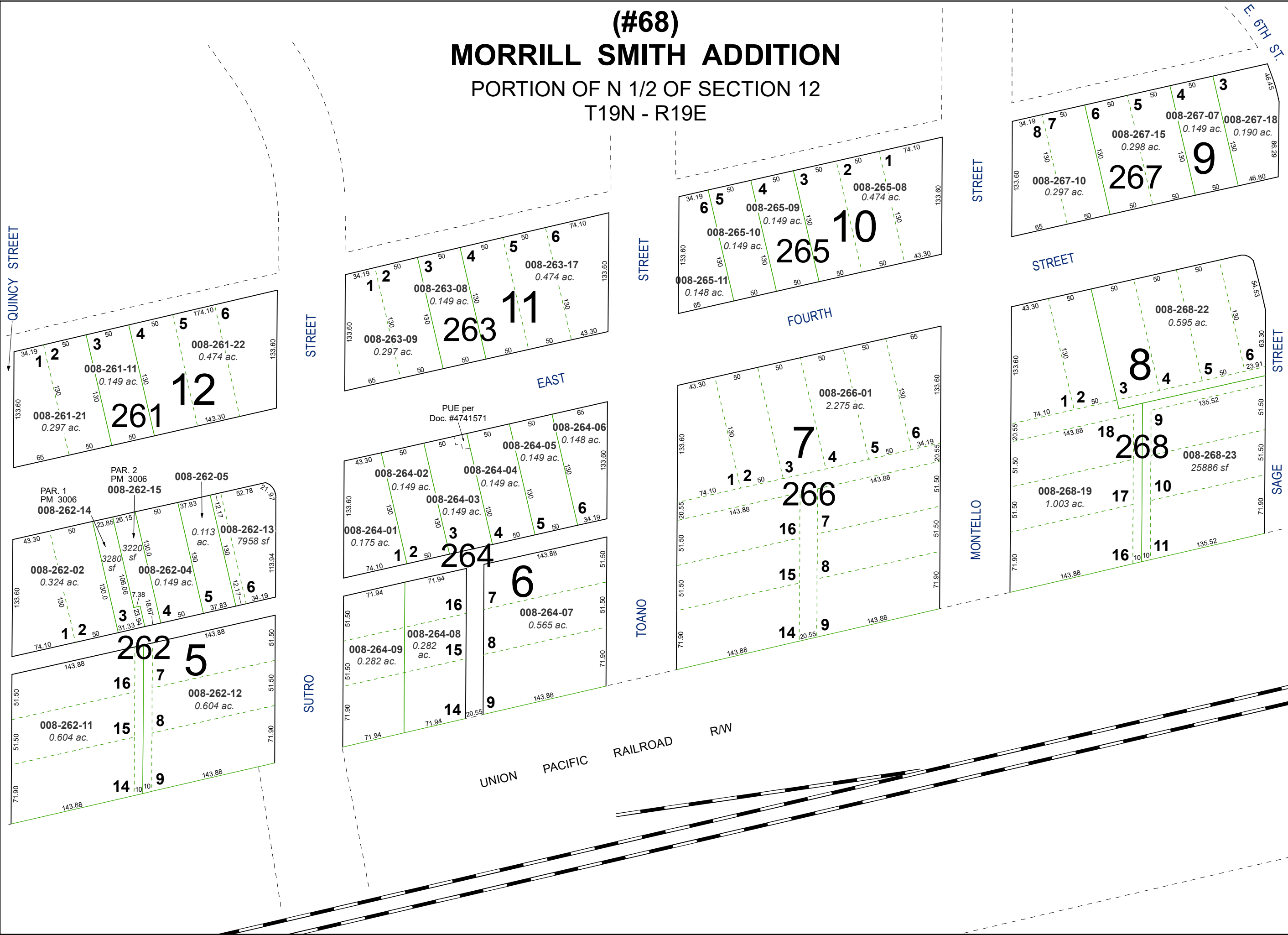
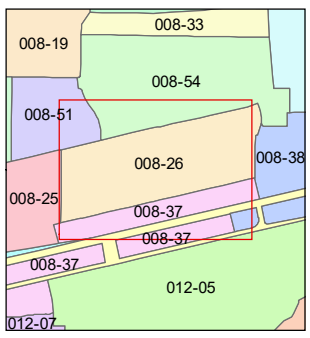
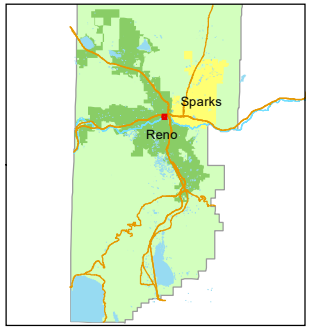
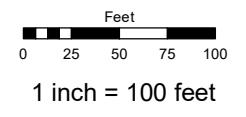


(#68)
MORRILL SMITH ADDITION
 PORTION OF N 1/2 OF SECTION 12
 T19N - R19E



Assessor's Map Number
008-26

STATE OF NEVADA
WASHOE COUNTY
 ASSESSOR'S OFFICE
 1001 East Ninth Street, Building D
 Reno, Nevada 89512
 (775) 328-2231



created by: TWT 10/18/2012
 updated: KSB 7/09/18 KSB 11/03/20

area previously shown on map(s):

NOTE: This map was prepared for the use of the Washoe County Assessor for assessment and illustrative purposes only. It does not represent a survey of the premises. No liability is assumed as to the sufficiency or accuracy of the data delineated hereon.