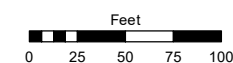
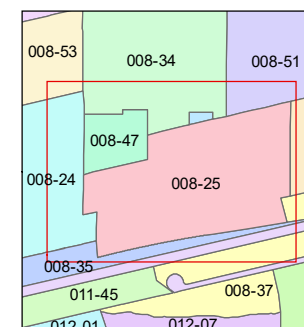
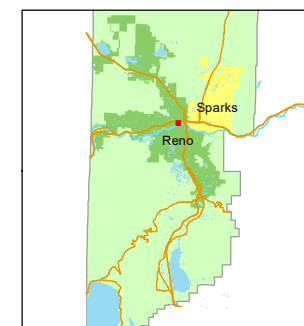


STATE OF NEVADA
WASHOE COUNTY
ASSESSOR'S OFFICE

1001 East Ninth Street, Building D
Reno, Nevada 89512
(775) 328-2231



1 inch = 100 feet



created by: CFB 05/24/2012

updated: CFB 5/25/12 KSB 8/13/18

KSB 5/23/19 KSB 1/12/21 KSB 5/12/22

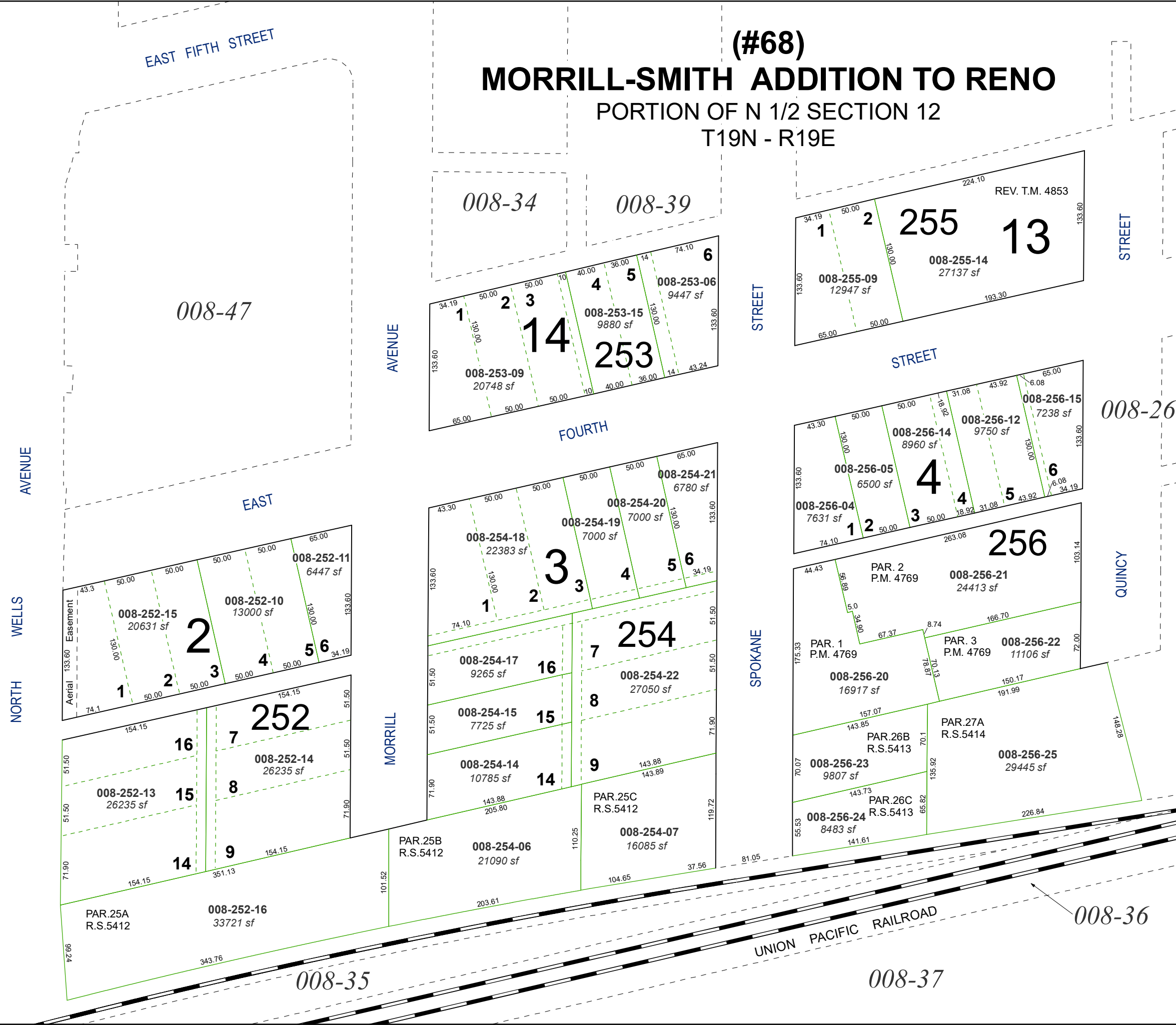
area previously shown on map(s):

NOTE: This map was prepared for the use of the Washoe County Assessor for assessment and illustrative purposes only. It does not represent a survey of the premises. No liability is assumed as to the sufficiency or accuracy of the data delineated hereon.

(#68)

MORRILL-SMITH ADDITION TO RENO

PORTION OF N 1/2 SECTION 12
T19N - R19E



EAST FIFTH STREET

AVENUE

NORTH WELLS AVENUE

AVENUE

MORRILL AVENUE

STREET

STREET

STREET

SPOKANE AVENUE

QUINCY AVENUE

UNION PACIFIC RAILROAD

008-47

008-34

008-39

008-253-09 20748 sf
008-253-15 9880 sf
008-253-06 9447 sf
253

008-255-09 12947 sf
008-255-14 27137 sf
255 13

008-256-04 7631 sf
008-256-05 6500 sf
008-256-14 8960 sf
008-256-12 9750 sf
008-256-15 7238 sf
256

008-252-11 6447 sf
008-252-10 13000 sf
008-252-15 20631 sf
252

008-252-13 26235 sf
008-252-14 26235 sf
008-252-16 33721 sf
252

008-254-18 22383 sf
008-254-19 7000 sf
008-254-20 7000 sf
008-254-21 6780 sf
008-254-17 9265 sf
008-254-15 7725 sf
008-254-14 10785 sf
008-254-16 9265 sf
008-254-15 7725 sf
008-254-14 10785 sf
008-254-07 16085 sf
008-254-06 21090 sf
254

PAR. 1 P.M. 4769
PAR. 2 P.M. 4769
PAR. 3 P.M. 4769
PAR. 26A R.S.5414
PAR. 26B R.S.5413
PAR. 26C R.S.5413
PAR. 25C R.S.5412
PAR. 25B R.S.5412
008-256-20 16917 sf
008-256-21 24413 sf
008-256-22 11106 sf
008-256-23 9807 sf
008-256-24 8483 sf
008-256-25 29445 sf
256

252

14

255

4

256

2

3

254

256

14

16

254

256

14

16

254

256

14

16

254

256

14

16

254

256

14

16

254

256

14

16

254

256

14

16

254

256

14

16

254

256

14

16

254

256

14

16

254

256

14

16

254

256

14

16

254

256

14

16

254

256

14

16

254

256

14

16

254

256

14

16

254

256

14

16

254

256

14

16

254

256

14

16

254

256

14

16

254

256

14

16

254

256

14

16

254

256

14

16

254

256

14

16

254

256

14

16

254

256

14

16

254

256

14

16

254

256

14

16

254

256

14

16

254

256

14

16

254

256

14

16

254

256

14

16

254

256

14

16

254

256

14

16

254

256

14

16

254

256

14

16

254

256

14

16

254

256

14

16

254

256

14

16

254

256

14

16

254

256

14

16

254

256

14

16

254

256

14

16

254

256

14

16

254

256

14

16

254

256

14

16

254

256

14

16

254

256

14

16

254

256

14

16

254

256

14

16

254

256

14

16

254

256

14

16

254

256

14

16

254

256

14

16

254

256

14

16

254

256

14

16

254

256

14

16

254

256

14

16

254

256

14

16

254

256

14

16

254

256

14

16

254

256

14

16

254

256

14

16

254

256

14

16

254

256

14

16

<