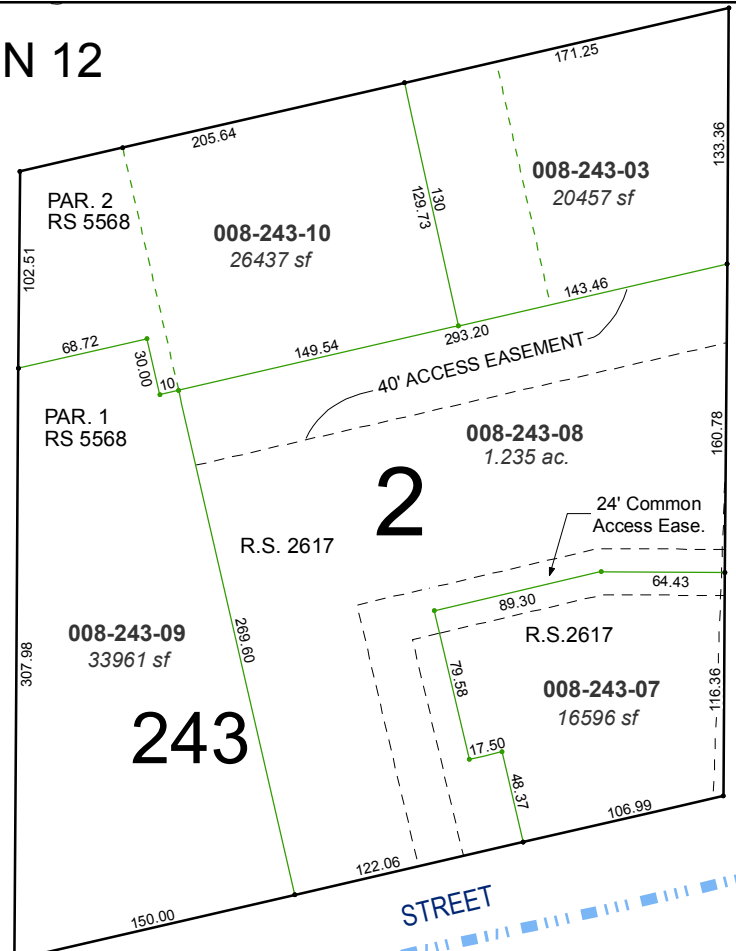
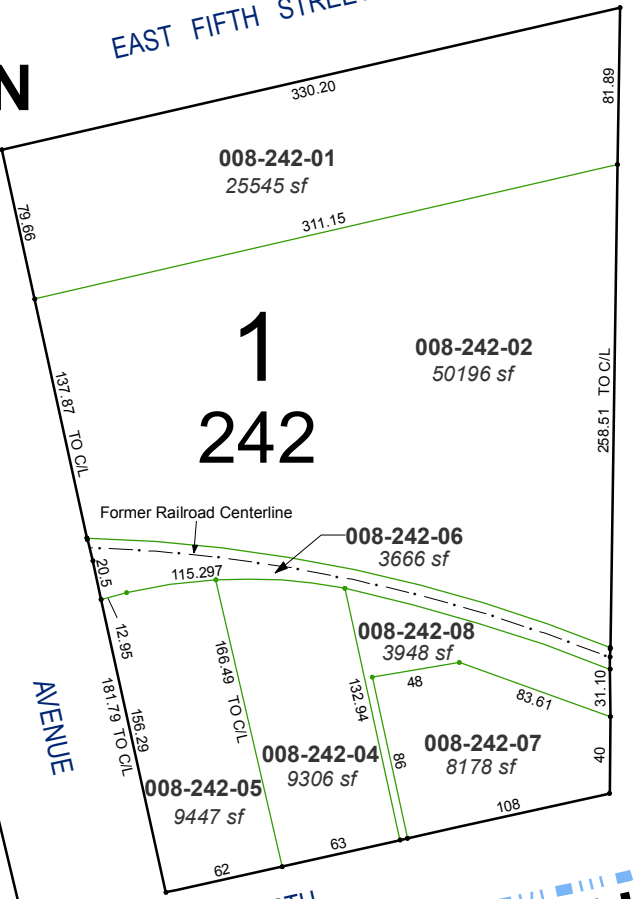
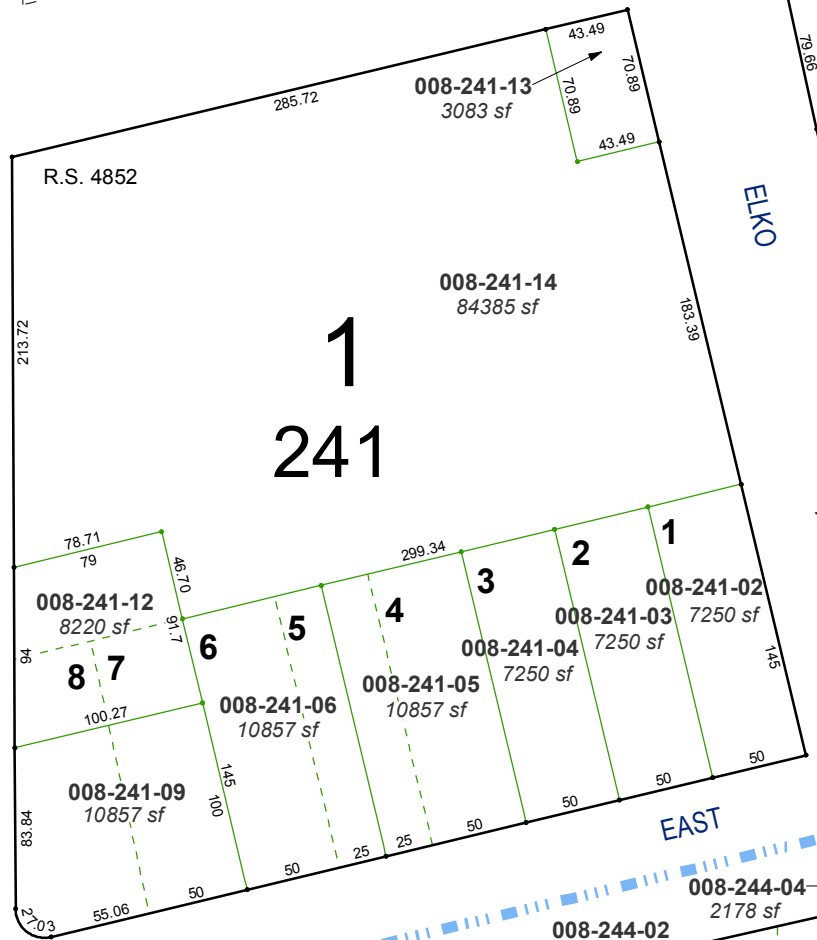
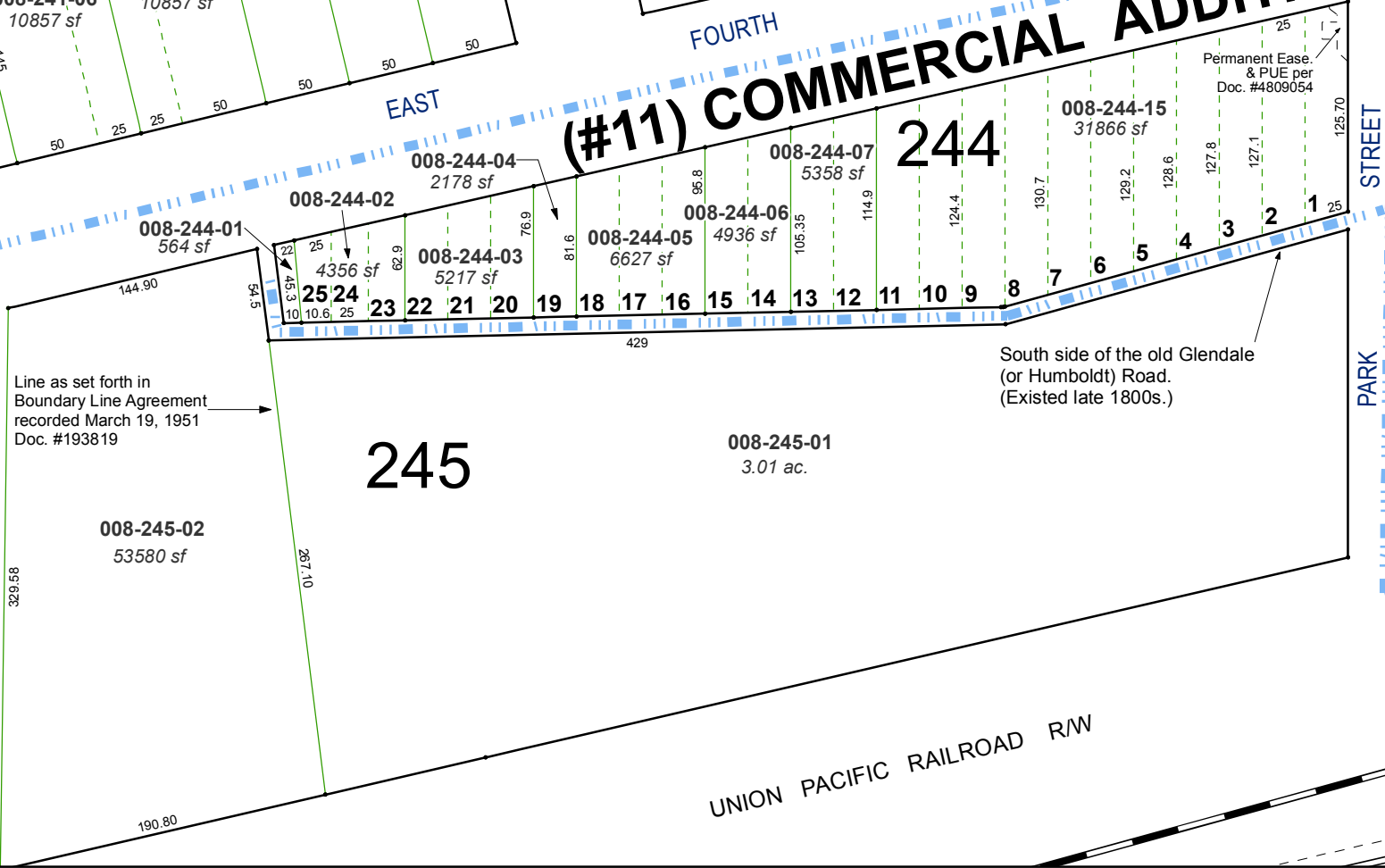


PORTION OF THE NW ¼ OF SECTION 12  
T19N - R19E

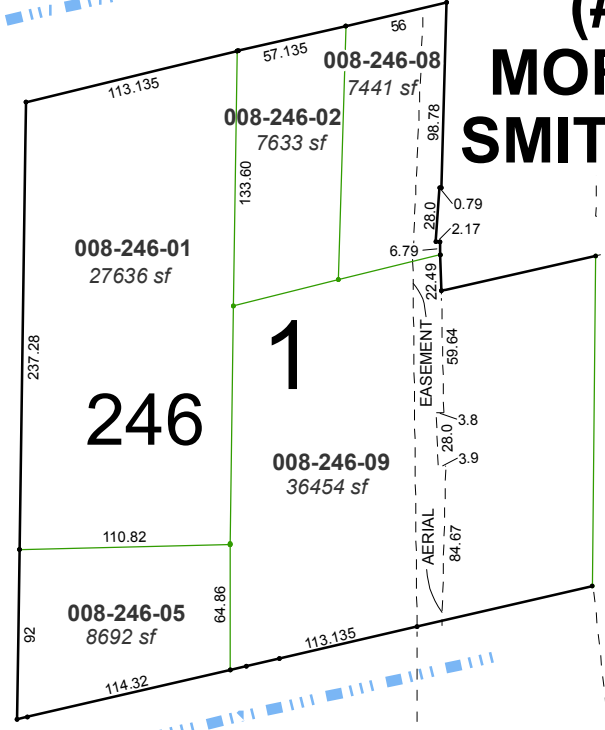
**(#70)  
MORRILL'S ADDITION**



**(#11) COMMERCIAL ADDITION**



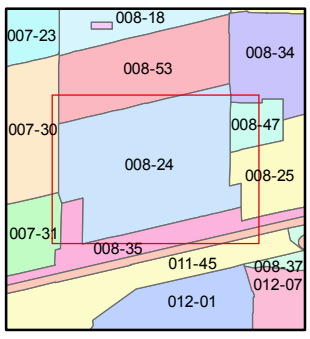
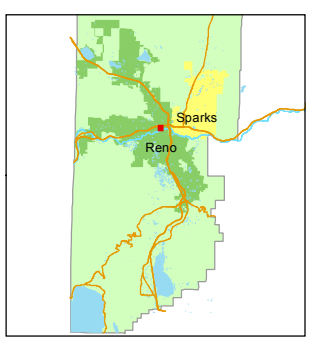
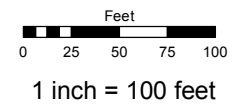
**(#68) MORRILL-SMITH ADD.**



Assessor's Map Number  
**008-24**

STATE OF NEVADA  
**WASHOE COUNTY**  
ASSESSOR'S OFFICE  
Michael E. Clark, Assessor

1001 East Ninth Street  
Building D  
Reno, Nevada 89512  
(775) 328-2231



created by: CFB 10/23/2009  
last updated: KSB 6/20/14 KSB 7/09/18

area previously shown on map(s)

NOTE: This map was prepared for the use of the Washoe County Assessor for assessment and illustrative purposes only. It does not represent a survey of the premises. No liability is assumed as to the sufficiency or accuracy of the data delineated hereon.