

(#502)

TACCHINO SUBDIVISION

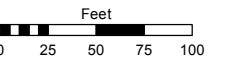
POR. SW 1/4 SEC. 6 & S 1/2 SEC. 7
T19N - R20E

Assessor's Map Number

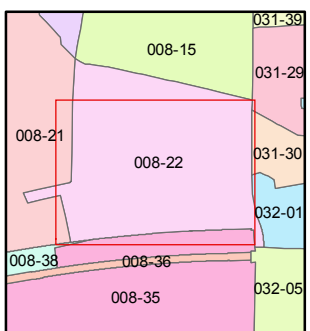
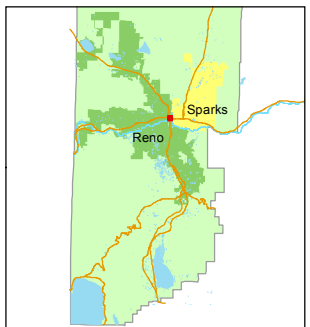
008-22

STATE OF NEVADA
WASHOE COUNTY
ASSESSOR'S OFFICE
Michael E. Clark, Assessor

1001 East Ninth Street
Building D
Reno, Nevada 89512
(775) 328-2231



1 inch = 100 feet



created by: TWT 10/15/2012

last updated: CFB 06/04/15 01/25/16

area previously shown on map(s)

NOTE: This map was prepared for the use of the Washoe County Assessor for assessment and illustrative purposes only. It does not represent a survey of the premises. No liability is assumed as to the sufficiency or accuracy of the data delineated hereon.

STREET

DEPAOLI

TACCHINO

STREET

INTERSTATE

80

008-224-01
2.17 ac.

008-224-02
20589 sf

008-224-03
20213 sf

008-224-04
19141 sf

008-224-05
15228 sf

221

008-221-12
36519 sf

A

224

008-224-09
78084 sf

Rev.T.M.3716

227

R.S. 4942

008-227-11
60027 sf

008-227-09
21000 sf

008-227-19
19901 sf

008-227-02
14000 sf

008-227-20
3500 sf

226

008-226-10
30000 sf

008-226-11
18000 sf

008-226-13
8000 sf

008-226-14
21000 sf

008-226-15
14000 sf

008-226-16
7000 sf

008-226-17
14000 sf

008-226-30
32000 sf

008-226-29
23000 sf

008-226-05
18000 sf

008-226-19
7000 sf

008-226-20
7000 sf

008-226-22
7000 sf

008-226-21
14000 sf

FOURTH

228

008-228-03
37647 sf

008-228-02
14523 sf

008-228-01
8037 sf

008-228-04
24534 sf

GALETTI

6
7