

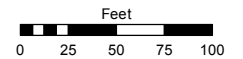
(#58) LEETE SYNDICATE ADDITION

PORTION OF THE SE 1/4 OF THE SW 1/4 OF SECTION 1
T19N - R19E

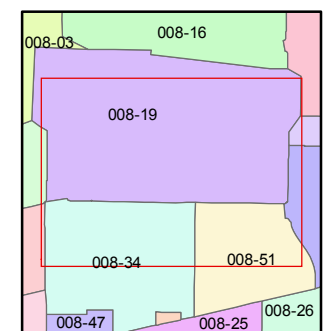
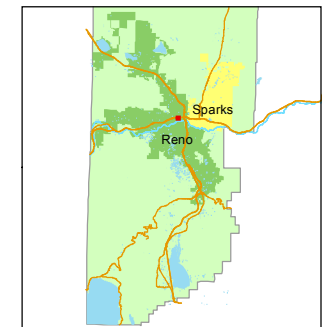
Assessor's Map Number
008-19

STATE OF NEVADA
WASHOE COUNTY
ASSESSOR'S OFFICE
Michael E. Clark, Assessor

1001 East Ninth Street
Building D
Reno, Nevada 89512
(775) 328-2231



1 inch = 100 feet



created by: TWT 10/10/2012

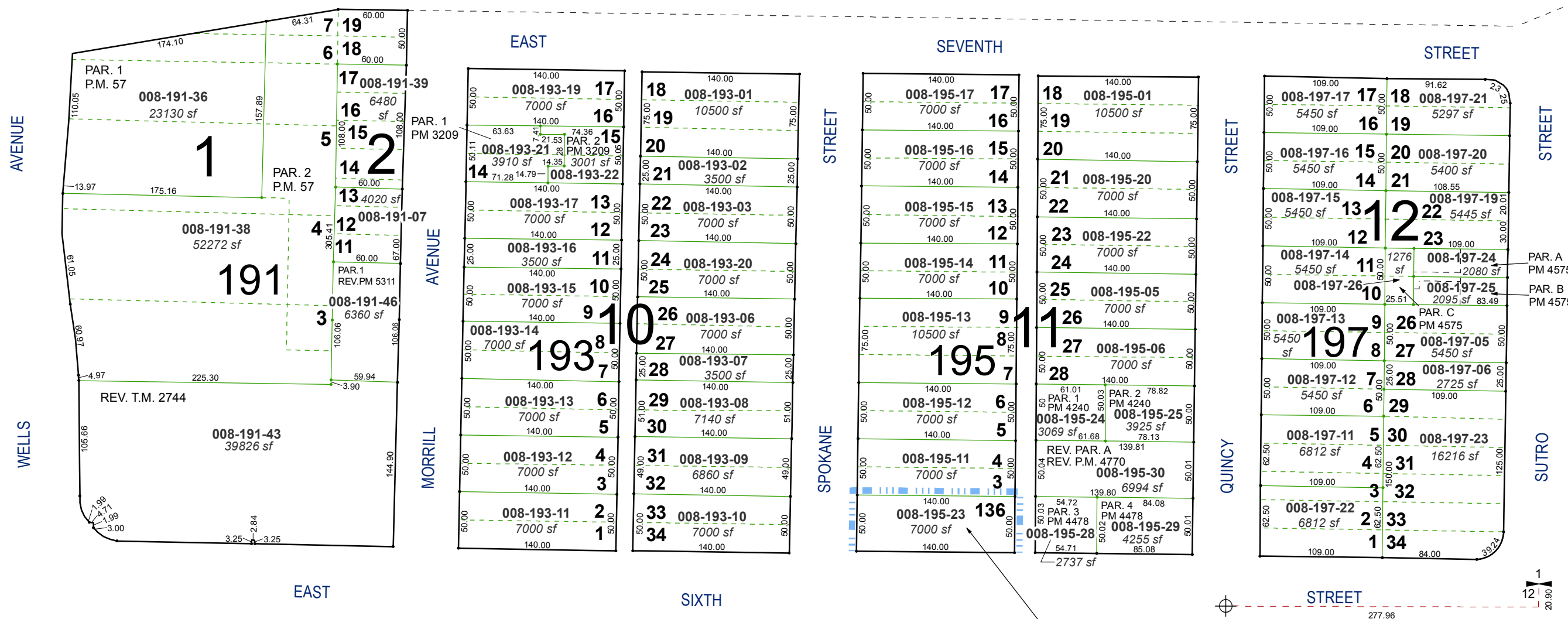
last updated: SR 10/9/17

area previously shown on map(s)

NOTE: This map was prepared for the use of the Washoe County Assessor for assessment and illustrative purposes only. It does not represent a survey of the premises. No liability is assumed as to the sufficiency or accuracy of the data delineated hereon.

80

INTERSTATE



(#1378-79) DOWNTOWN SERVICE CENTER

NORTH

EAST

SIXTH

STREET

12
20.90