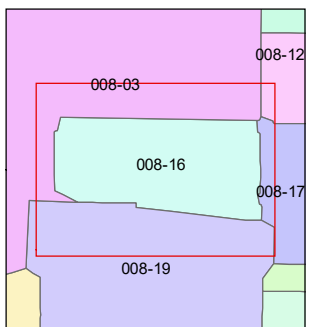
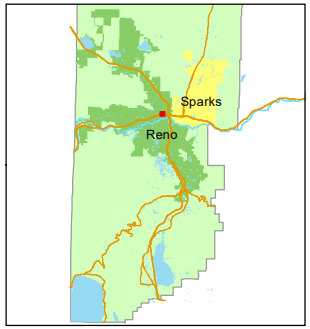
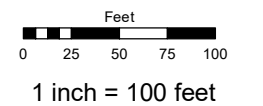


(#58)
LEETE SYNDICATE ADDITION
 PORTION OF SW¼ SECTION 1
 T19N - R19E

Assessor's Map Number
008-16

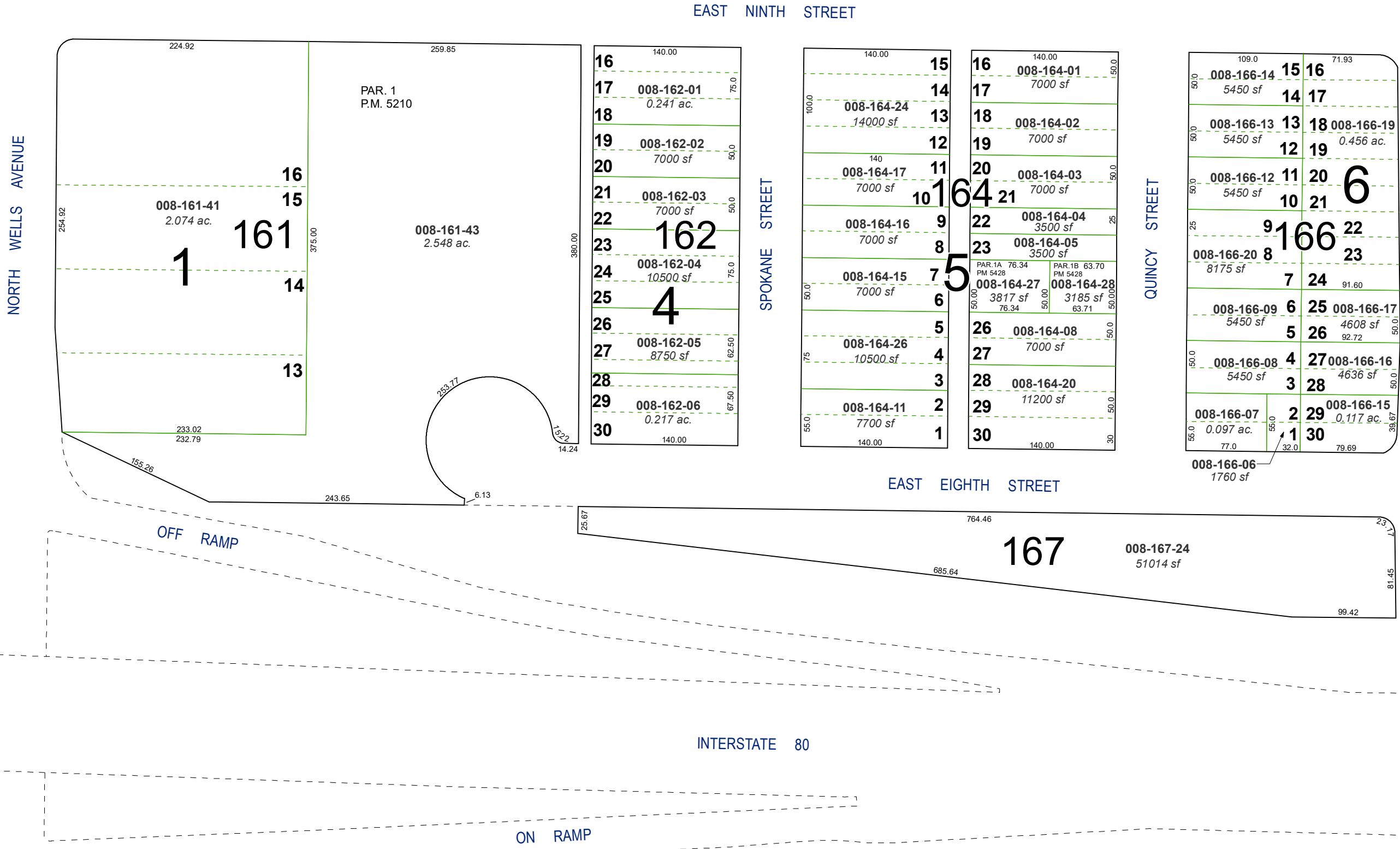
STATE OF NEVADA
WASHOE COUNTY
ASSESSOR'S OFFICE
 1001 East Ninth Street, Building D
 Reno, Nevada 89512
 (775) 328-2231



created by: TWT 10/09/2012
 updated: CFB 01/21/16 SR 09/26/17
SR 10/22/19

area previously shown on map(s):

NOTE: This map was prepared for the use of the Washoe County Assessor for assessment and illustrative purposes only. It does not represent a survey of the premises. No liability is assumed as to the sufficiency or accuracy of the data delineated hereon.



EAST NINTH STREET

SPOKANE STREET

QUINCY STREET

SUTRO STREET

EAST EIGHTH STREET

INTERSTATE 80

OFF RAMP

ON RAMP