

# (#650) SILVERADA SUBDIVISION NO. 1

POR. NE 1/4 SEC. 1  
T19N - R19E  
AND  
POR. NW 1/4 SEC. 6  
T19N - R20E

CARVILLE	
008-141-01 0.164 ac. <b>13</b>	008-141-02 7191 sf <b>14</b>
008-141-26 0.141 ac. <b>12</b>	008-141-03 0.139 ac. <b>15</b>
008-141-25 0.141 ac. <b>11</b>	008-141-04 0.139 ac. <b>16</b>
008-141-24 0.141 ac. <b>10</b>	008-141-05 0.139 ac. <b>17</b>
008-141-23 0.141 ac. <b>9</b>	008-141-06 0.139 ac. <b>18</b>
008-141-22 0.142 ac. <b>8</b>	008-141-07 0.139 ac. <b>19</b>
<b>141</b>	
008-141-21 0.142 ac. <b>7</b>	008-141-08 0.139 ac. <b>20</b>
008-141-20 0.142 ac. <b>6</b>	008-141-09 0.139 ac. <b>21</b>
008-141-19 0.142 ac. <b>5</b>	008-141-10 0.139 ac. <b>22</b>
008-141-18 0.143 ac. <b>4</b>	008-141-11 0.139 ac. <b>23</b>
008-141-17 0.143 ac. <b>3</b>	008-141-12 0.139 ac. <b>24</b>
008-141-16 0.143 ac. <b>2</b>	008-141-13 0.139 ac. <b>25</b>
008-141-15 0.168 ac. <b>1</b>	008-141-14 0.162 ac. <b>26</b>

008-142-01 0.162 ac. <b>39</b>	008-142-02 0.162 ac. <b>40</b>
008-142-26 0.139 ac. <b>38</b>	008-142-03 0.139 ac. <b>41</b>
008-142-25 0.139 ac. <b>37</b>	008-142-04 0.139 ac. <b>42</b>
008-142-24 0.139 ac. <b>36</b>	008-142-05 0.139 ac. <b>43</b>
008-142-23 0.139 ac. <b>35</b>	008-142-06 0.139 ac. <b>44</b>
008-142-22 0.139 ac. <b>34</b>	008-142-07 0.139 ac. <b>45</b>
<b>142</b>	
008-142-21 0.139 ac. <b>33</b>	008-142-08 0.139 ac. <b>46</b>
008-142-20 0.139 ac. <b>32</b>	008-142-09 0.139 ac. <b>47</b>
008-142-19 0.139 ac. <b>31</b>	008-142-10 0.139 ac. <b>48</b>
008-142-18 0.139 ac. <b>30</b>	008-142-11 0.139 ac. <b>49</b>
008-142-17 0.139 ac. <b>29</b>	008-142-12 0.139 ac. <b>50</b>
008-142-16 0.139 ac. <b>28</b>	008-142-13 0.139 ac. <b>51</b>
008-142-15 0.162 ac. <b>27</b>	008-142-14 0.162 ac. <b>52</b>

DRIVE	
008-143-01 7191 sf <b>65</b>	008-143-02 0.180 ac. <b>13</b>
008-143-26 0.139 ac. <b>64</b>	008-143-03 0.152 ac. <b>12</b>
008-143-25 0.139 ac. <b>63</b>	008-143-04 0.151 ac. <b>11</b>
008-143-24 0.139 ac. <b>62</b>	008-143-05 0.149 ac. <b>10</b>
008-143-23 0.139 ac. <b>61</b>	008-143-06 0.148 ac. <b>9</b>
008-143-22 0.139 ac. <b>60</b>	008-143-07 0.146 ac. <b>8</b>
<b>143</b>	
008-143-21 0.139 ac. <b>59</b>	008-143-08 0.145 ac. <b>7</b>
008-143-20 0.139 ac. <b>58</b>	008-143-09 0.144 ac. <b>6</b>
008-143-19 0.139 ac. <b>57</b>	008-143-10 0.142 ac. <b>5</b>
008-143-18 0.139 ac. <b>56</b>	008-143-11 0.141 ac. <b>4</b>
008-143-17 0.139 ac. <b>55</b>	008-143-12 0.140 ac. <b>3</b>
008-143-16 0.139 ac. <b>54</b>	008-143-13 0.138 ac. <b>2</b>
008-143-15 0.162 ac. <b>53</b>	008-143-14 0.161 ac. <b>1</b>

008-144-13 0.188 ac. <b>14</b>	
008-144-12 0.161 ac. <b>15</b>	
008-144-11 0.161 ac. <b>16</b>	
008-144-10 0.161 ac. <b>17</b>	
008-144-09 0.161 ac. <b>18</b>	
008-144-16 0.158 ac. <b>19</b>	
<b>144</b>	
008-144-15 0.152 ac. <b>20</b>	
008-144-06 0.161 ac. <b>21</b>	
008-144-14 0.142 ac. <b>22</b>	
008-144-18 5105 sf <b>23</b>	
<b>24</b>	

FREEWAY  
  
U. S. 395

STREET

STREET

STREET

STREET

BARSTOW

GOLDFIELD

MANHATTAN

BUTLER

EAST

TENTH

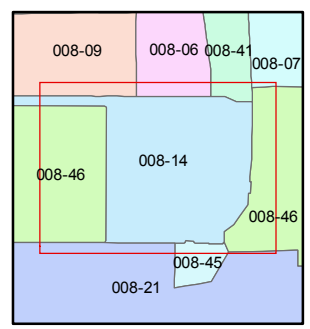
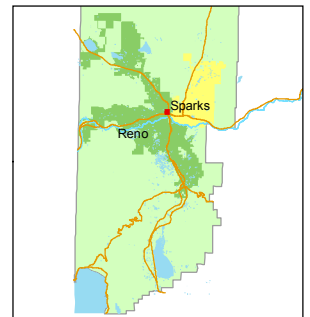
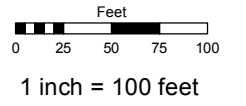
STREET

# (#675) SILVERADA SUBDIVISION NO. 2

Assessor's Map Number  
**008-14**

STATE OF NEVADA  
**WASHOE COUNTY**  
ASSESSOR'S OFFICE  
Joshua G. Wilson, Assessor

1001 East Ninth Street  
Building D  
Reno, Nevada 89512  
(775) 328-2231



created by: TWT 1/31/2013  
last updated: \_\_\_\_\_  
area previously shown on map(s) \_\_\_\_\_

NOTE: This map was prepared for the use of the Washoe County Assessor for assessment and illustrative purposes only. It does not represent a survey of the premises. No liability is assumed as to the sufficiency or accuracy of the data delineated hereon.