

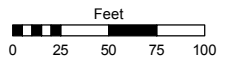
(#317)
FERRARIS ADDITION
 PORTION OF THE SE 1/4 OF SECTION 1
 T19N - R19E

Assessor's Map Number

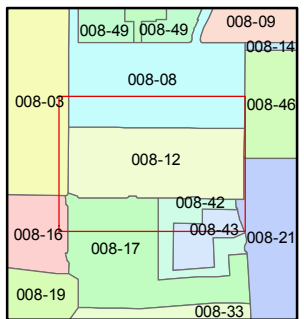
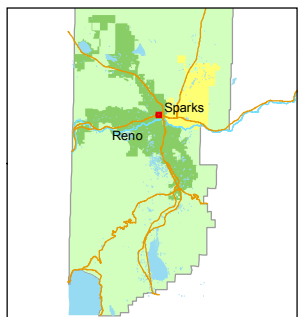
008-12

STATE OF NEVADA
WASHOE COUNTY
 ASSESSOR'S OFFICE
 Joshua G. Wilson, Assessor

1001 East Ninth Street
 Building D
 Reno, Nevada 89512
 (775) 328-2231



1 inch = 100 feet

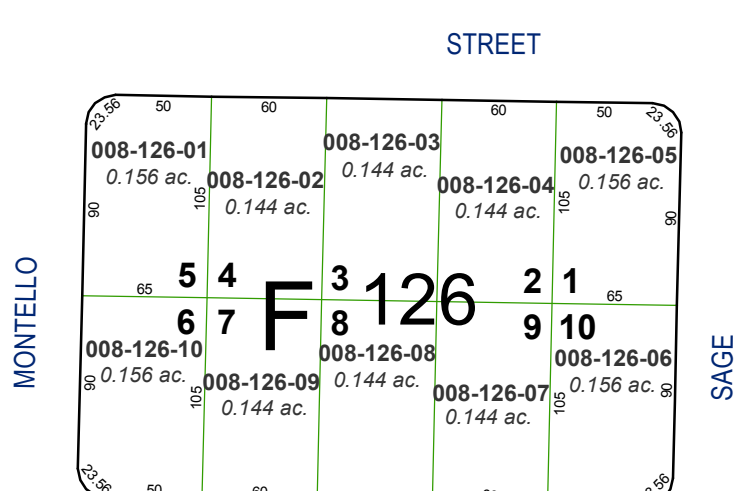
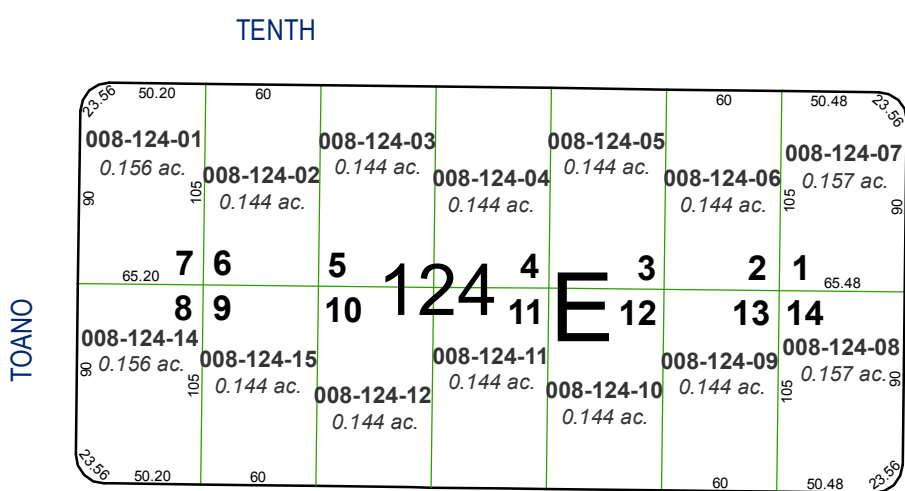
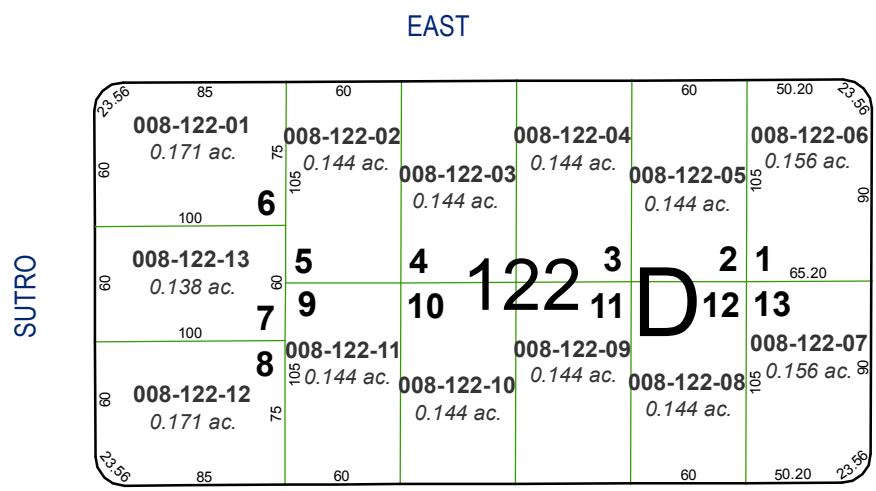
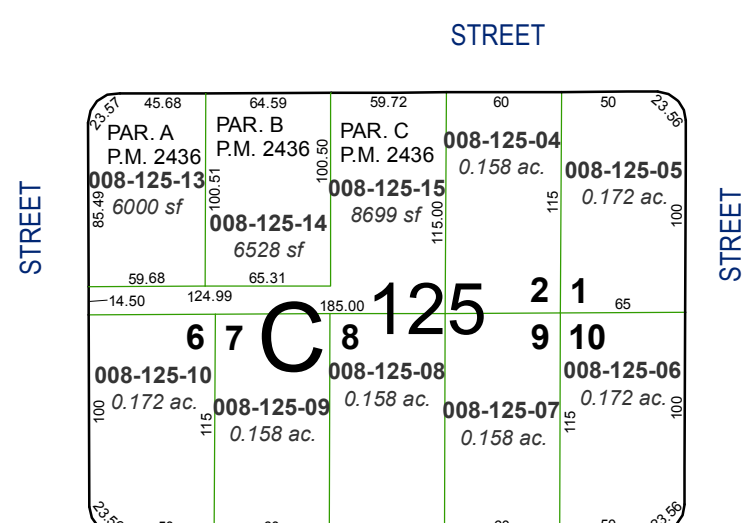
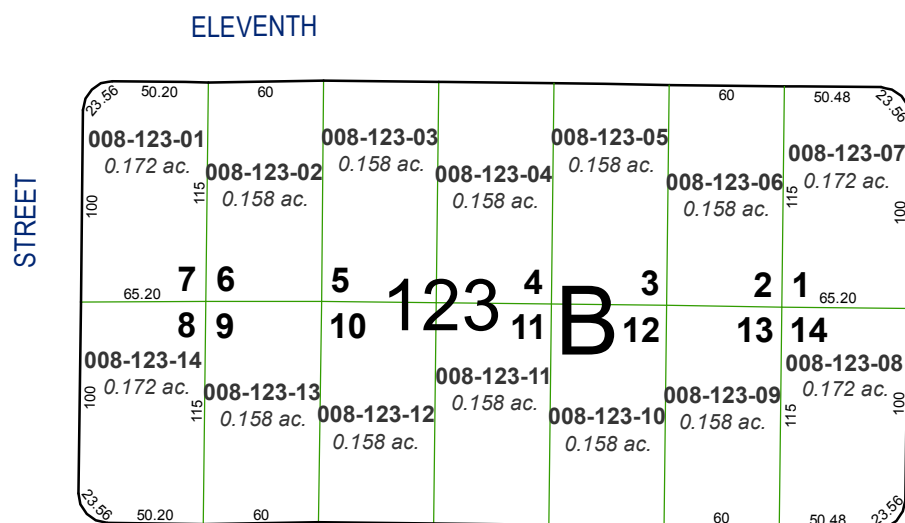
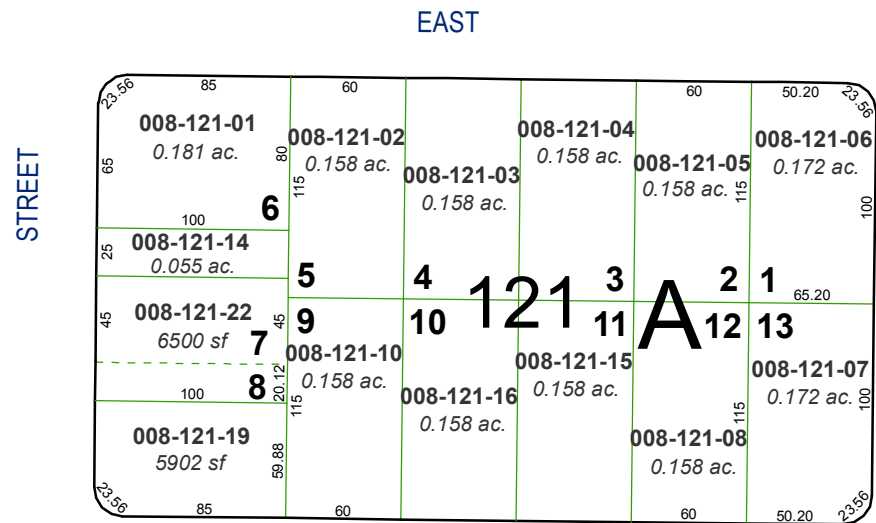


created by: TWT 10/5/2012

last updated: _____

area previously shown on map(s) _____

NOTE: This map was prepared for the use of the Washoe County Assessor for assessment and illustrative purposes only. It does not represent a survey of the premises. No liability is assumed as to the sufficiency or accuracy of the data delineated hereon.



STREET

STREET

STREET

STREET

SUTRO

TOANO

MONTELLO

SAGE