

PORTION OF THE SE 1/4 OF SECTION 1
T19N - R19E

PATTON - FREDERICK ADDITION

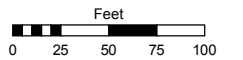
(#797) NO. 2 (#742) NO. 1

Assessor's Map Number

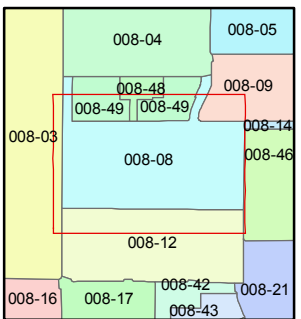
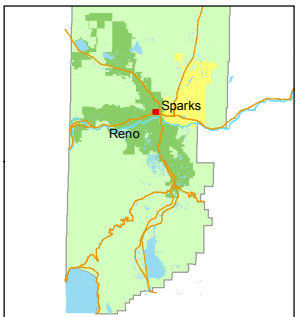
008-08

STATE OF NEVADA
WASHOE COUNTY
ASSESSOR'S OFFICE
Joshua G. Wilson, Assessor

1001 East Ninth Street
Building D
Reno, Nevada 89512
(775) 328-2231



1 inch = 100 feet



created by: TWT 10/2/2012

last updated: _____

area previously shown on map(s) _____

NOTE: This map was prepared for the use of the Washoe County Assessor for assessment and illustrative purposes only. It does not represent a survey of the premises. No liability is assumed as to the sufficiency or accuracy of the data delineated hereon.

◆ CENTER SEC. 1

CARVILLE

DRIVE

STREET

SUTRO

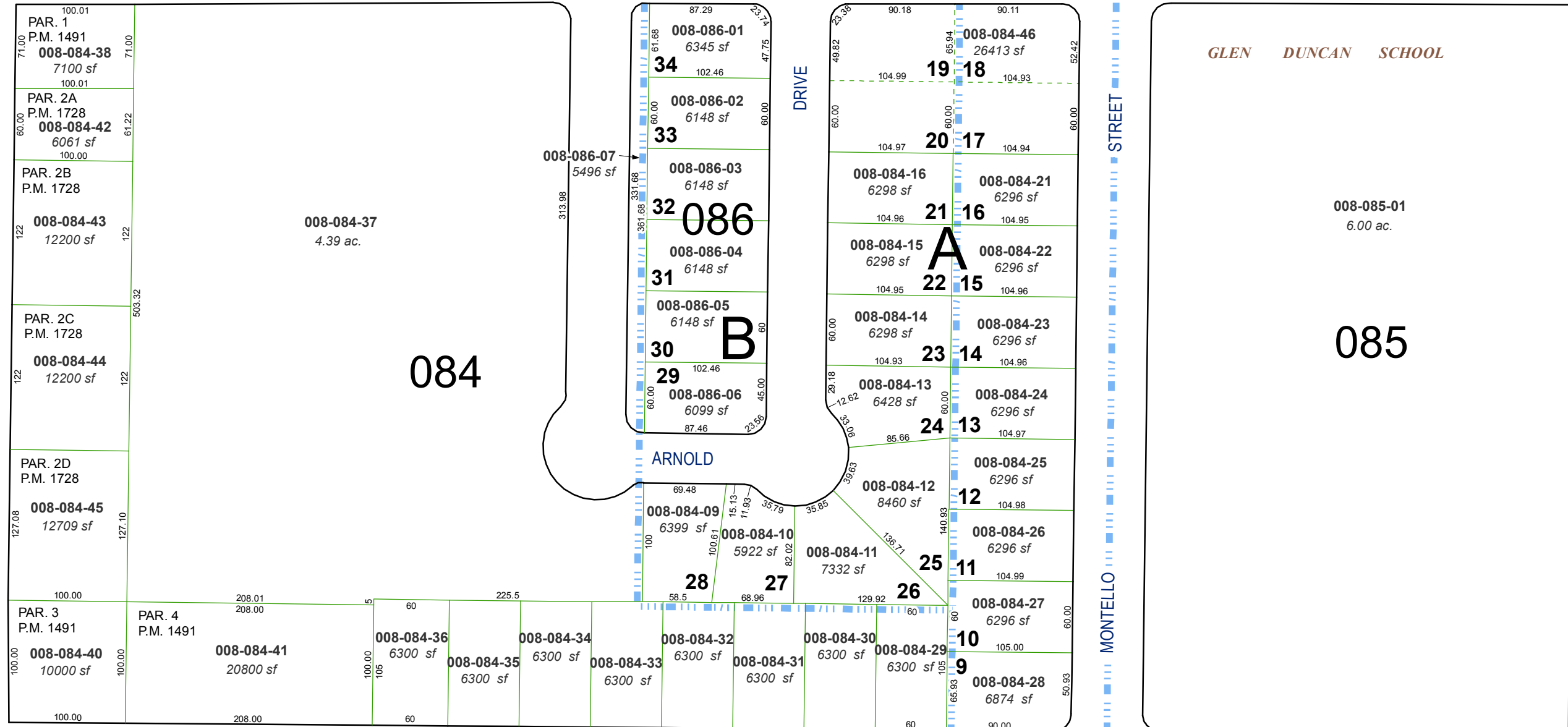
WEST

ELEVENTH

STREET

TOANO STREET

SAGE STREET



NW COR. FERRARIS ADD.