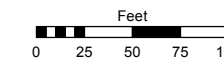
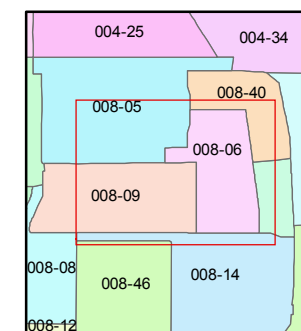
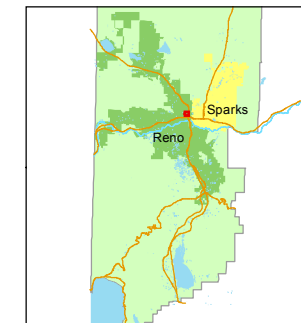


STATE OF NEVADA
WASHOE COUNTY
ASSESSOR'S OFFICE
Joshua G. Wilson, Assessor

1001 East Ninth Street
Building D
Reno, Nevada 89512
(775) 328-2231



1 inch = 100 feet



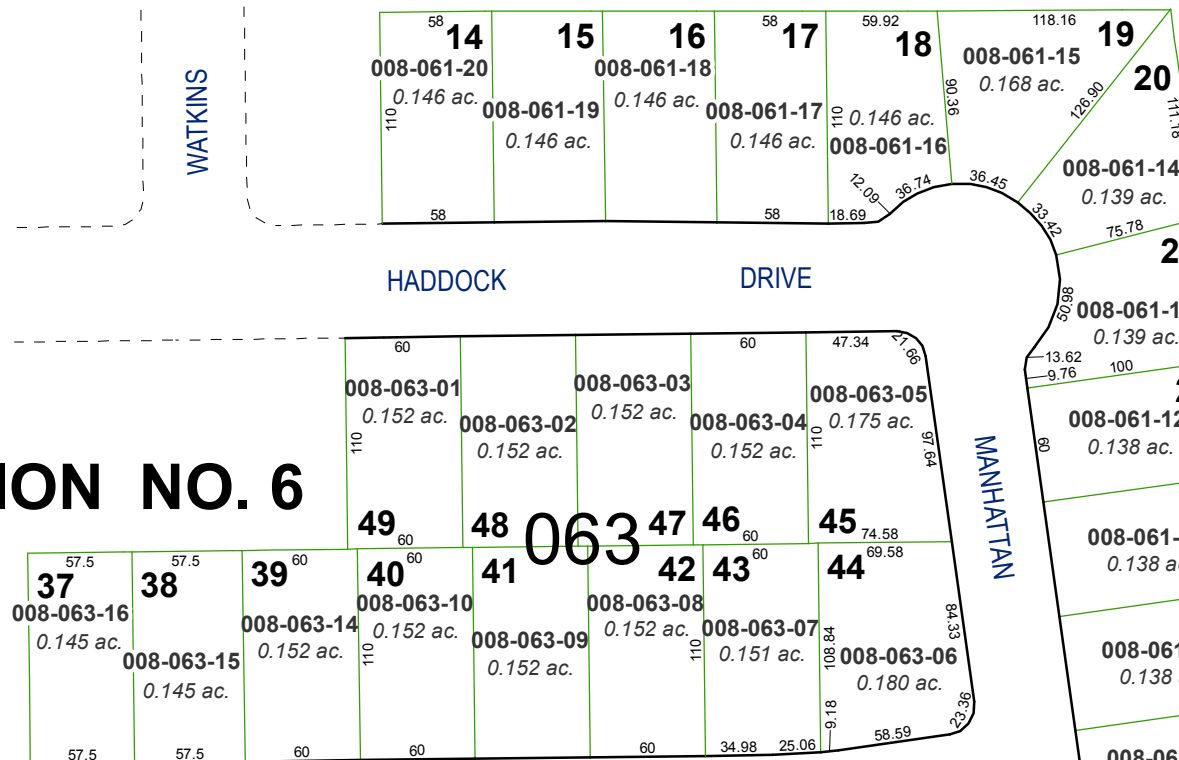
created by: TWT 09/20/2012

last updated:

area previously shown on map(s)

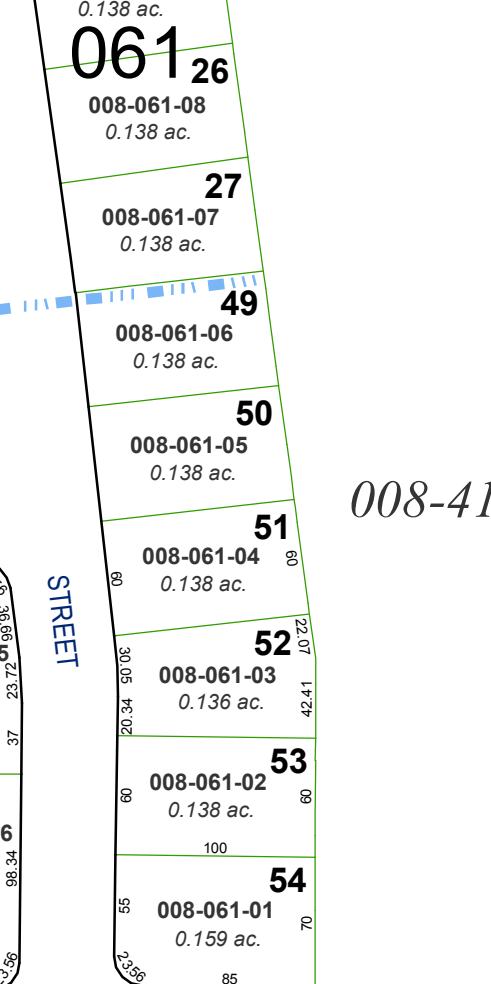
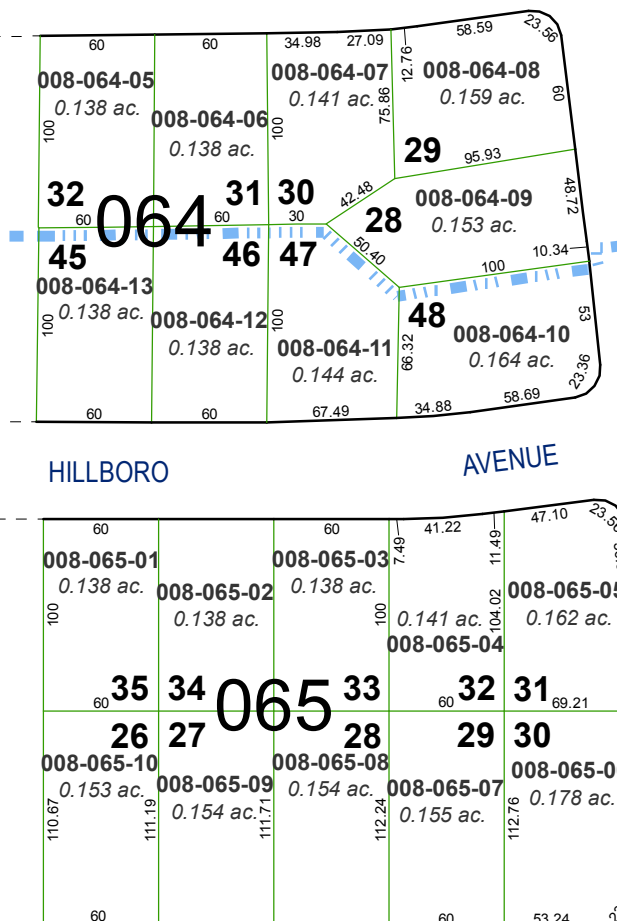
NOTE: This map was prepared for the use of the Washoe County Assessor for assessment and illustrative purposes only. It does not represent a survey of the premises. No liability is assumed as to the sufficiency or accuracy of the data delineated hereon.

(#747)
HILLBORO SUBDIVISION NO. 6



(#674)
HILLBORO SUBDIVISION NO. 5

POR. NE 1/4 SEC. 1, T19N - R19E &
POR. NW 1/4 SEC. 6, T19N - R20E



008-41

BARSTOW ST.

GOLDFIELD ST.