

**(#534)
HILLBORO
SUBDIVISION NO. 2**

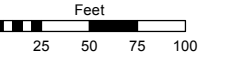
**(#635)
HILLBORO SUBDIVISION NO. 3
POR. OF NE 1/4 OF SEC. 1, T19N - R19E**

Assessor's Map Number

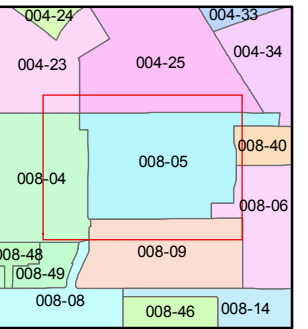
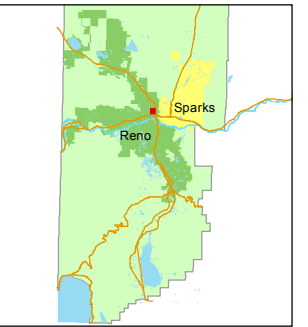
008-05

STATE OF NEVADA
WASHOE COUNTY
ASSESSOR'S OFFICE
Joshua G. Wilson, Assessor

1001 East Ninth Street
Building D
Reno, Nevada 89512
(775) 328-2231



1 inch = 100 feet

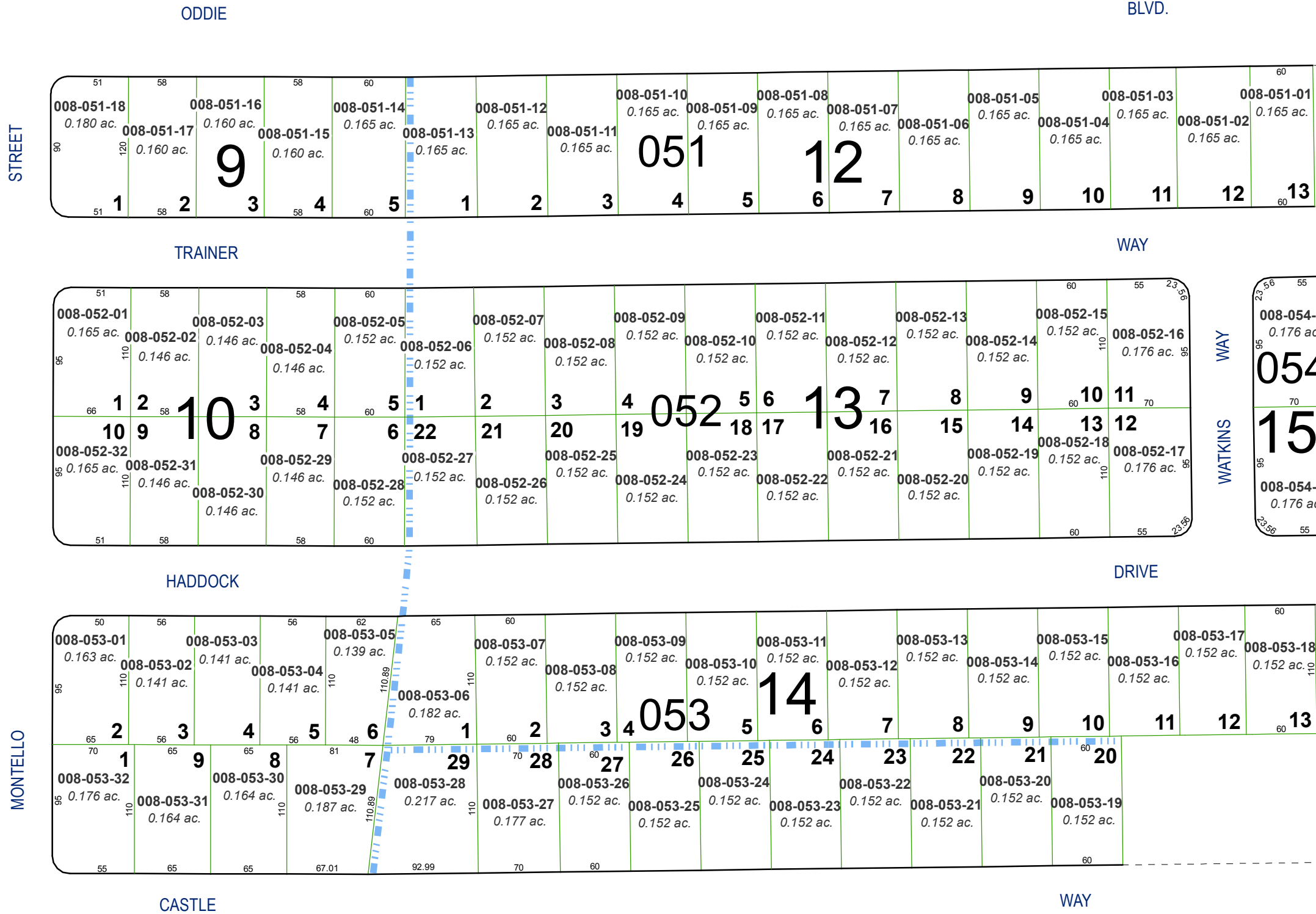


created by: TWT 09/20/2012

last updated: _____

area previously shown on map(s) _____

NOTE: This map was prepared for the use of the Washoe County Assessor for assessment and illustrative purposes only. It does not represent a survey of the premises. No liability is assumed as to the sufficiency or accuracy of the data delineated hereon.



**(#625)
HILLBORO SUBDIVISION NO. 4**