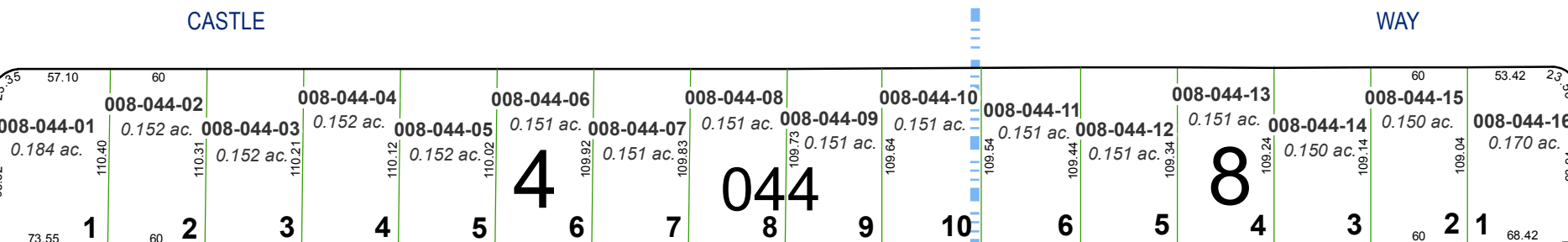
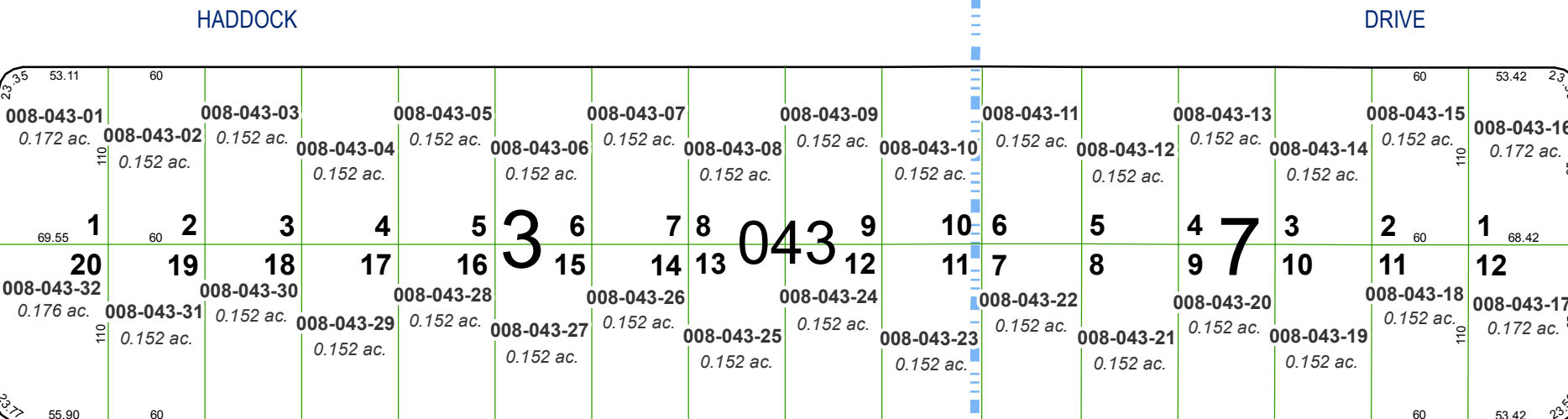
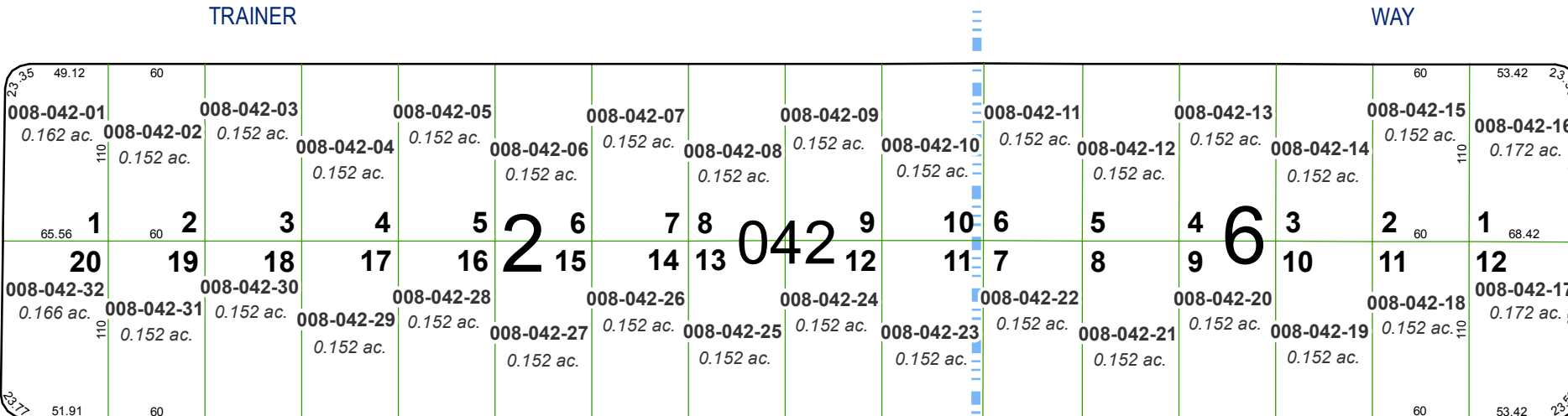
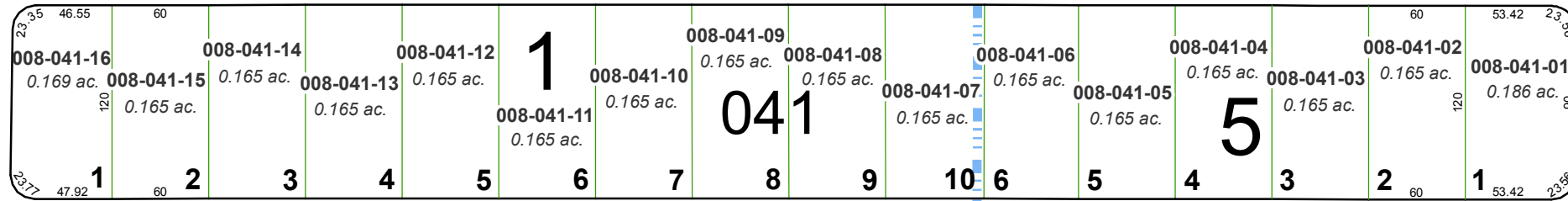


ODDIE BLVD. (#494)
HILLBORO SUBDIVISION NO. 1

(#534) **HILLBORO
 SUBDIVISION NO. 2**

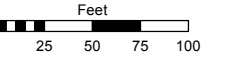


POR. OF NE 1/4 OF SEC. 1, T19N - R19E

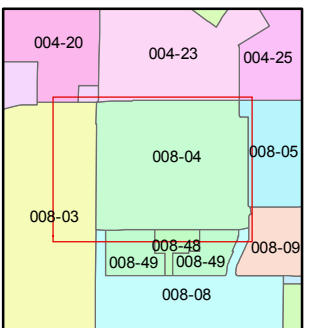
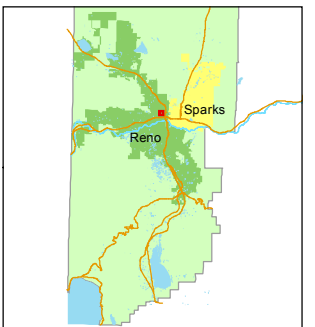
Assessor's Map Number
008-04

STATE OF NEVADA
WASHOE COUNTY
 ASSESSOR'S OFFICE
 Joshua G. Wilson, Assessor

1001 East Ninth Street
 Building D
 Reno, Nevada 89512
 (775) 328-2231



1 inch = 100 feet



created by: TWT 09/20/2012

last updated:

area previously shown on map(s)

NOTE: This map was prepared for the use of the Washoe County Assessor for assessment and illustrative purposes only. It does not represent a survey of the premises. No liability is assumed as to the sufficiency or accuracy of the data delineated hereon.