

(#441)

STERLING VILLAGE

PORTION OF THE NW 1/4 OF SECTION 1

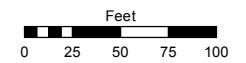
T19N - R19E

Assessor's Map Number

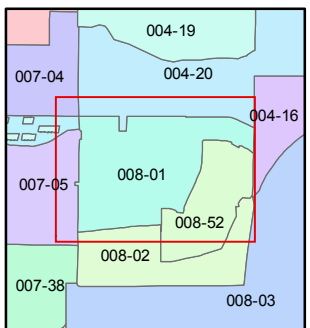
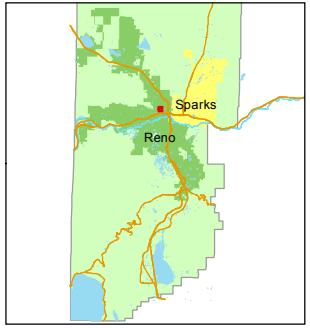
008-01

STATE OF NEVADA
WASHOE COUNTY
ASSESSOR'S OFFICE
Michael E. Clark, Assessor

1001 East Ninth Street
Building D
Reno, Nevada 89512
(775) 328-2231



1 inch = 100 feet

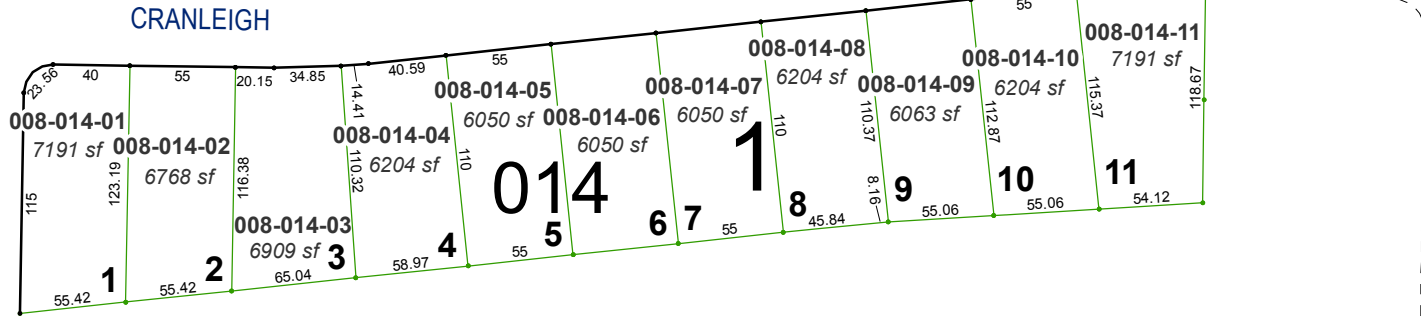
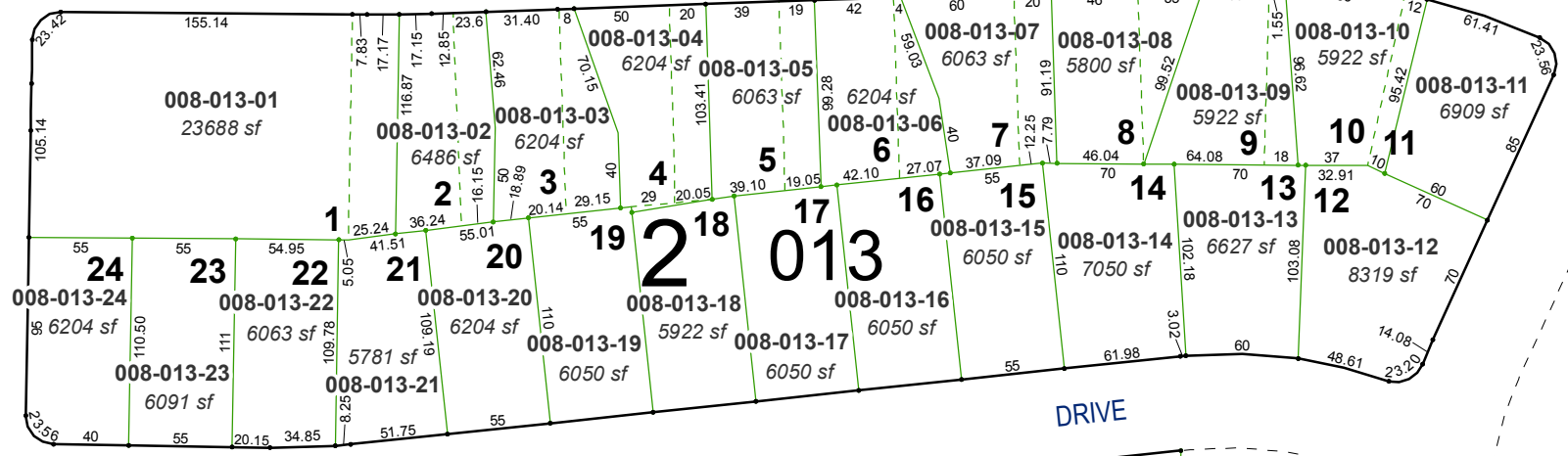
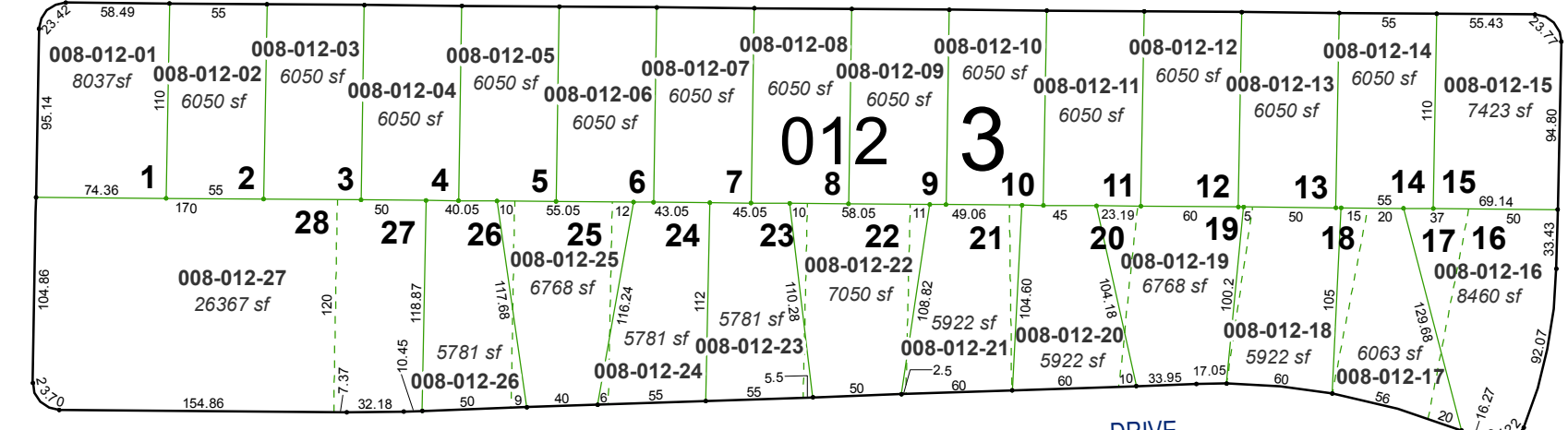
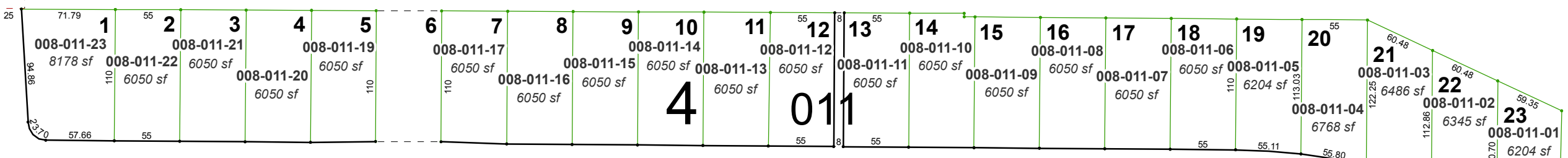


created by: TWT 9/24/2012

last updated: EMG 4/13/16

area previously shown on map(s)

NOTE: This map was prepared for the use of the Washoe County Assessor for assessment and illustrative purposes only. It does not represent a survey of the premises. No liability is assumed as to the sufficiency or accuracy of the data delineated hereon.



STRATFORD

SOUTHWORTH