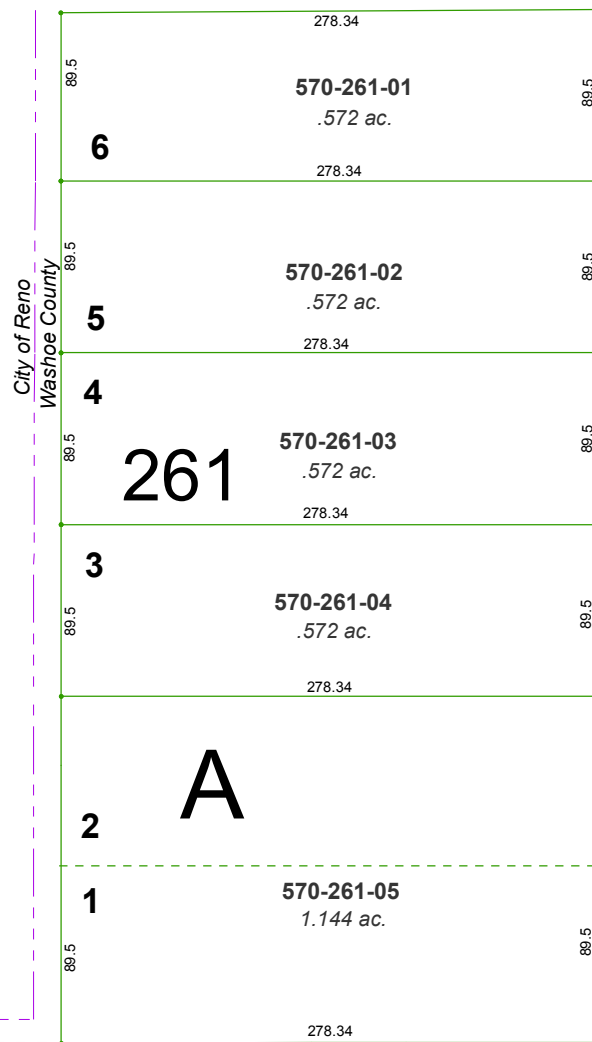


J.E. SWEATT TRACT (UNOFFICIAL)

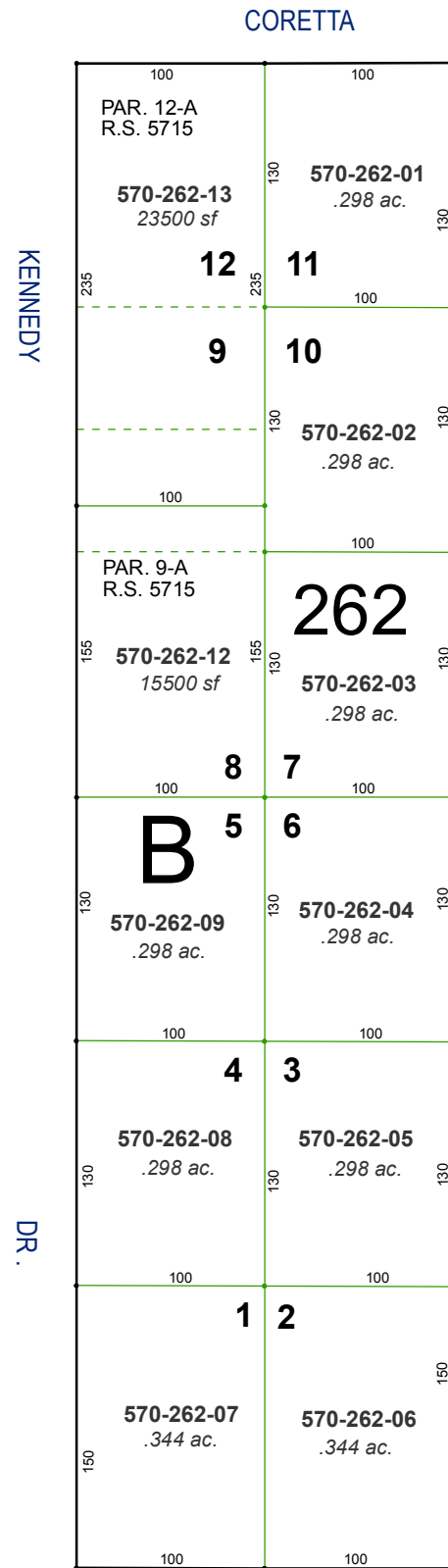
PORTION OF SW ¼ SEC. 9
T20N - R19E



A

261

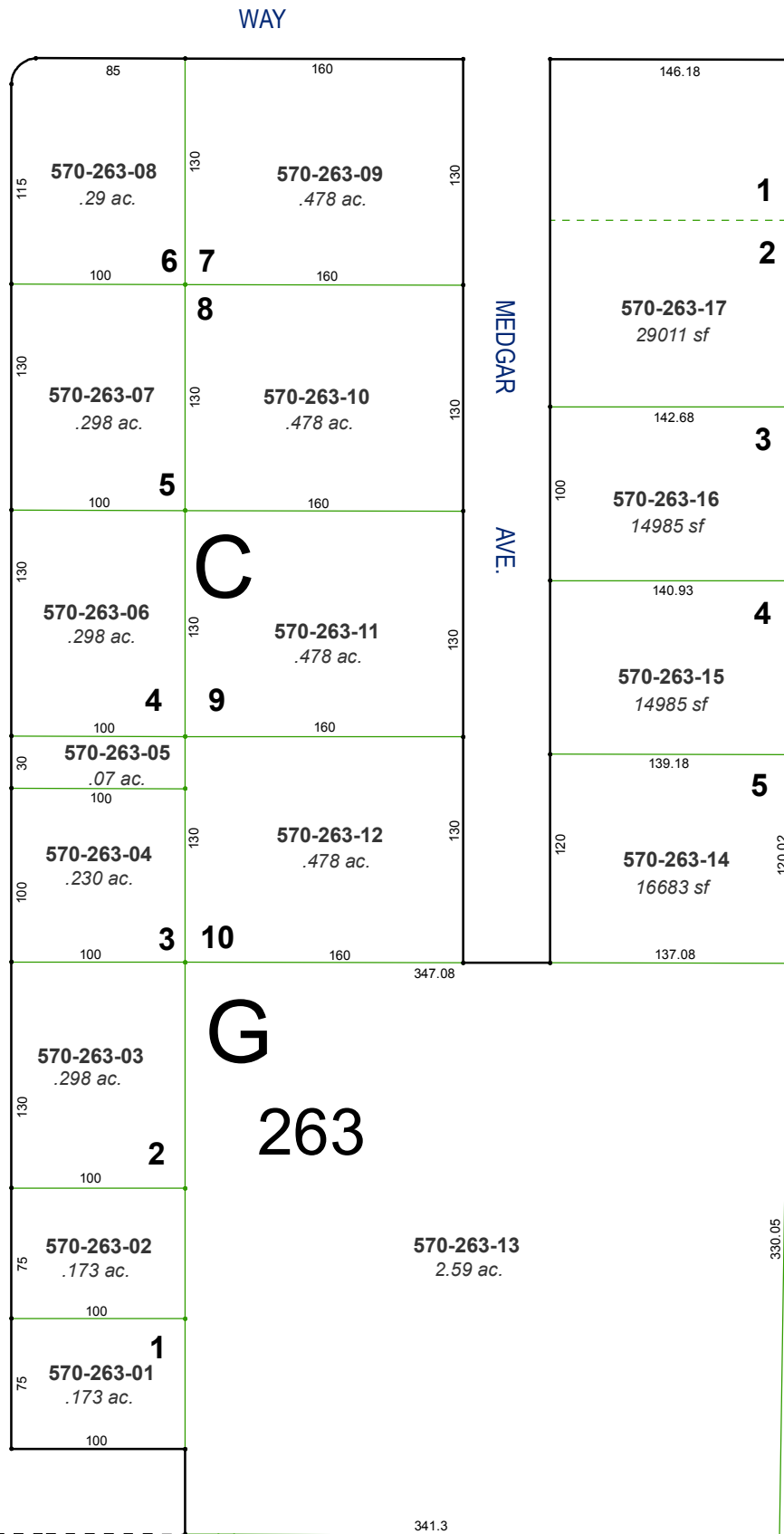
082-26



B

262

MALCOLM AVE.



C

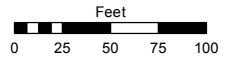
G

263

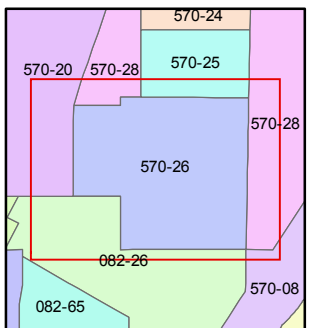
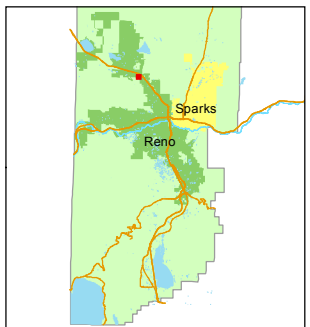
Assessor's Map Number
570-26

STATE OF NEVADA
WASHOE COUNTY
ASSESSOR'S OFFICE
Michael E. Clark, Assessor

1001 East Ninth Street
Building D
Reno, Nevada 89512
(775) 328-2231



1 inch = 100 feet



created by: CFB 03/10/2011

last updated: EMG 3/25/16

area previously shown on map(s)

082-12

NOTE: This map was prepared for the use of the Washoe County Assessor for assessment and illustrative purposes only. It does not represent a survey of the premises. No liability is assumed as to the sufficiency or accuracy of the data delineated hereon.