

**NO ACTIVE PARCELS ON THIS MAP**

**SEE 570-12**

**(#4835)**

**MIRAVALLE PHASE 1**

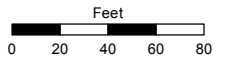
**A POR. OF THE NE ¼ OF SEC. 16  
T20N - R19E**

Assessor's Map Number

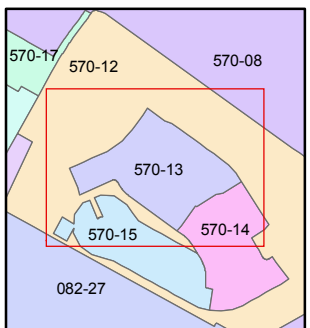
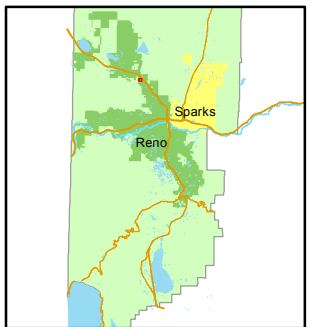
**570-13**

STATE OF NEVADA  
**WASHOE COUNTY**  
ASSESSOR'S OFFICE  
Joshua G. Wilson, Assessor

1001 East Ninth Street  
Building D  
Reno, Nevada 89512  
(775) 328-2231



1 inch = 80 feet



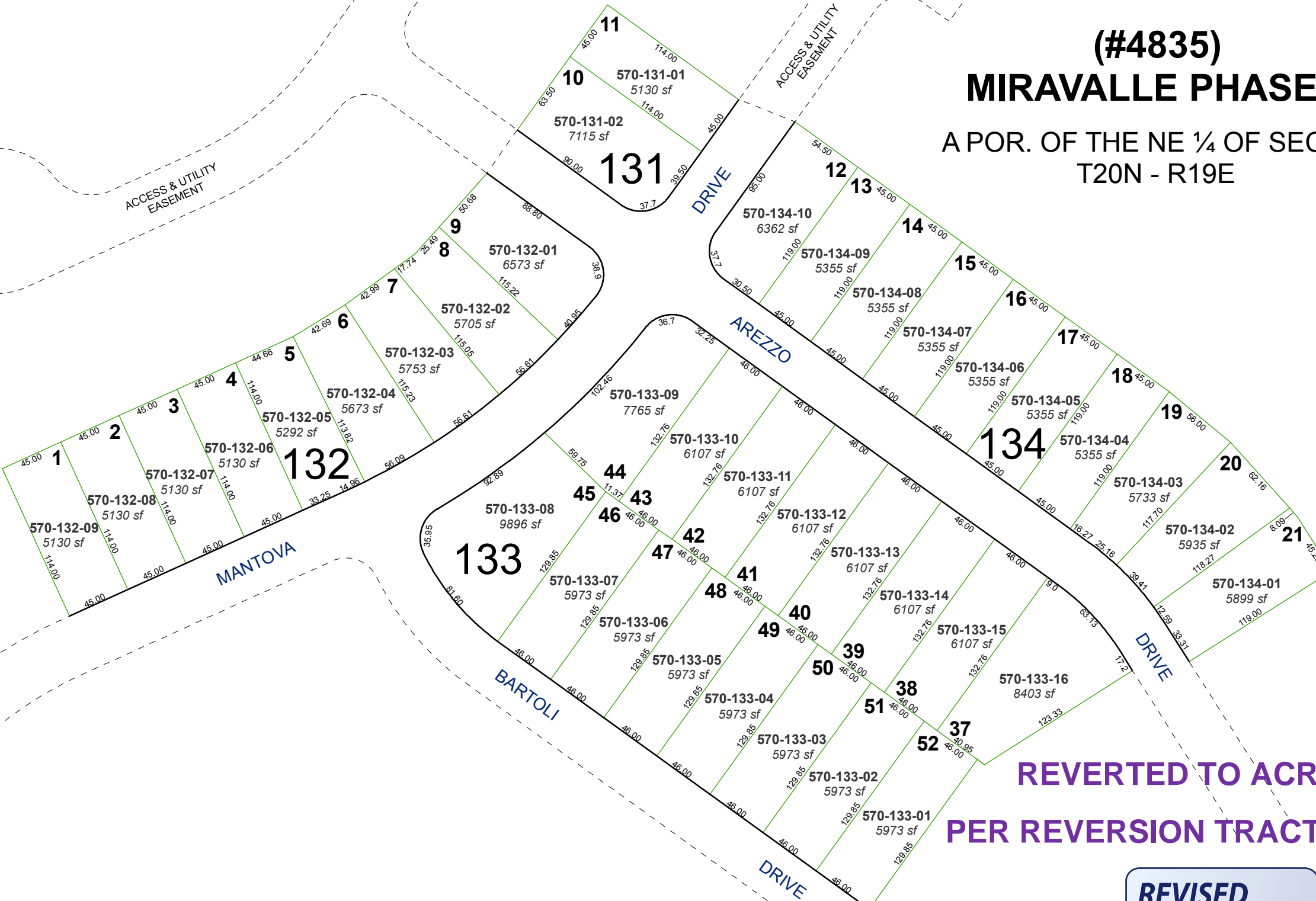
created by: NLH 3/22/2012

last updated: \_\_\_\_\_

area previously shown on map(s)

570-08

NOTE: This map was prepared for the use of the Washoe County Assessor for assessment and illustrative purposes only. It does not represent a survey of the premises. No liability is assumed as to the sufficiency or accuracy of the data delineated herein.



**REVERTED TO ACREAGE  
PER REVERSION TRACT MAP 5065**

**REVISED**  
5:19 pm, Mar 05, 2014