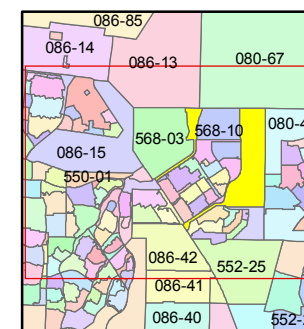
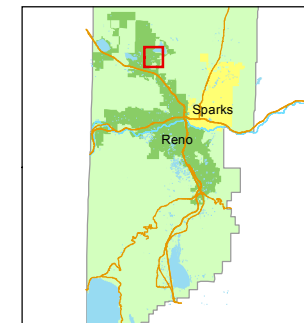


1 inch = 800 feet



created by: CFB 9/08/2010

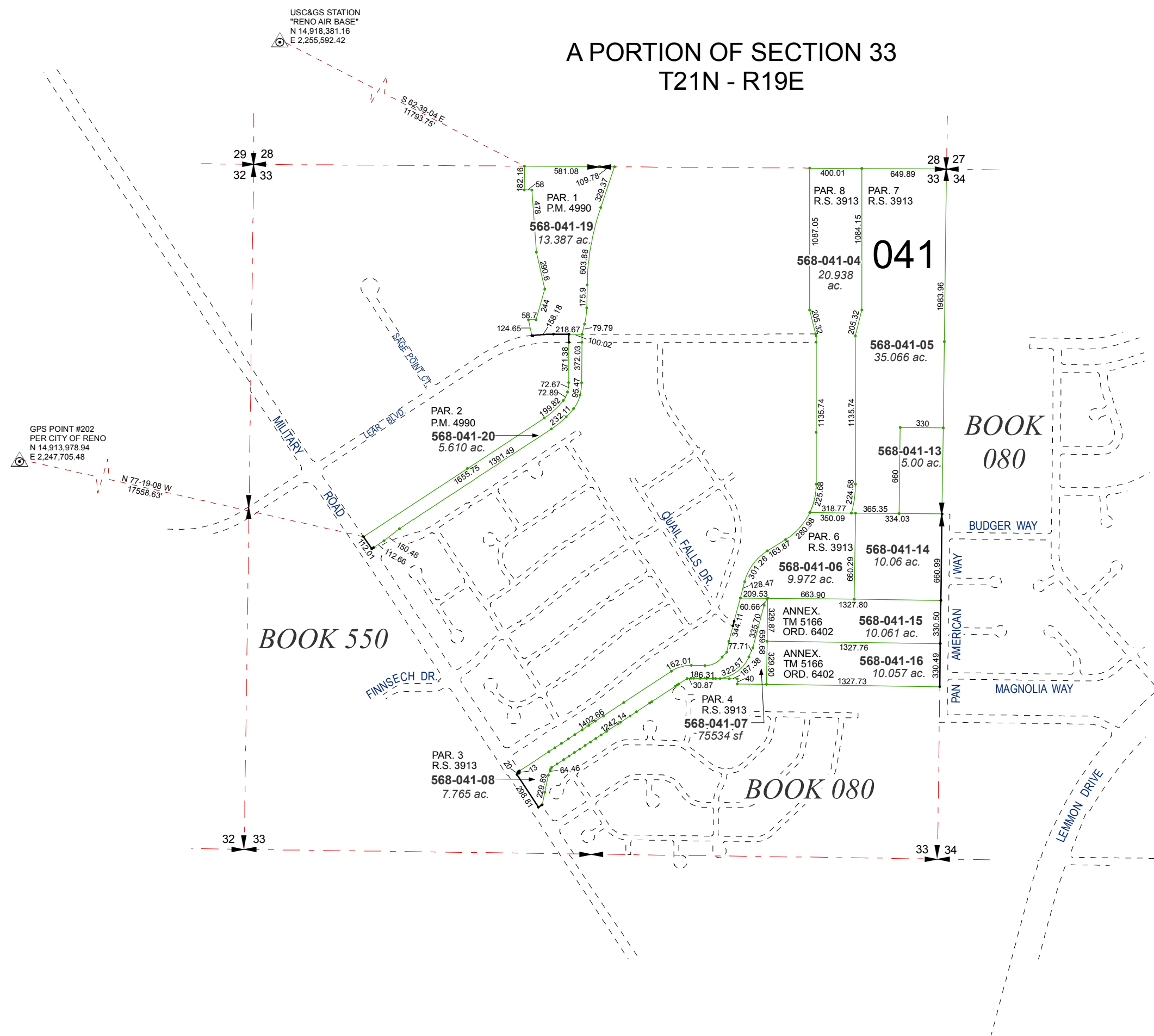
last updated: NLH 2/04/11 KSB 6/24/16

area previously shown on map(s)

080-02

NOTE: This map was prepared for the use of the Washoe County Assessor for assessment and illustrative purposes only. It does not represent a survey of the premises. No liability is assumed as to the sufficiency or accuracy of the data delineated hereon.

**A PORTION OF SECTION 33
T21N - R19E**



USC&GS STATION
"RENO AIR BASE"
N 14,918,381.16
E 2,255,592.42

GPS POINT #202
PER CITY OF RENO
N 14,913,978.94
E 2,247,705.48

NOTE: This map was prepared for the use of the Washoe County Assessor for assessment and illustrative purposes only. It does not represent a survey of the premises. No liability is assumed as to the sufficiency or accuracy of the data delineated hereon.