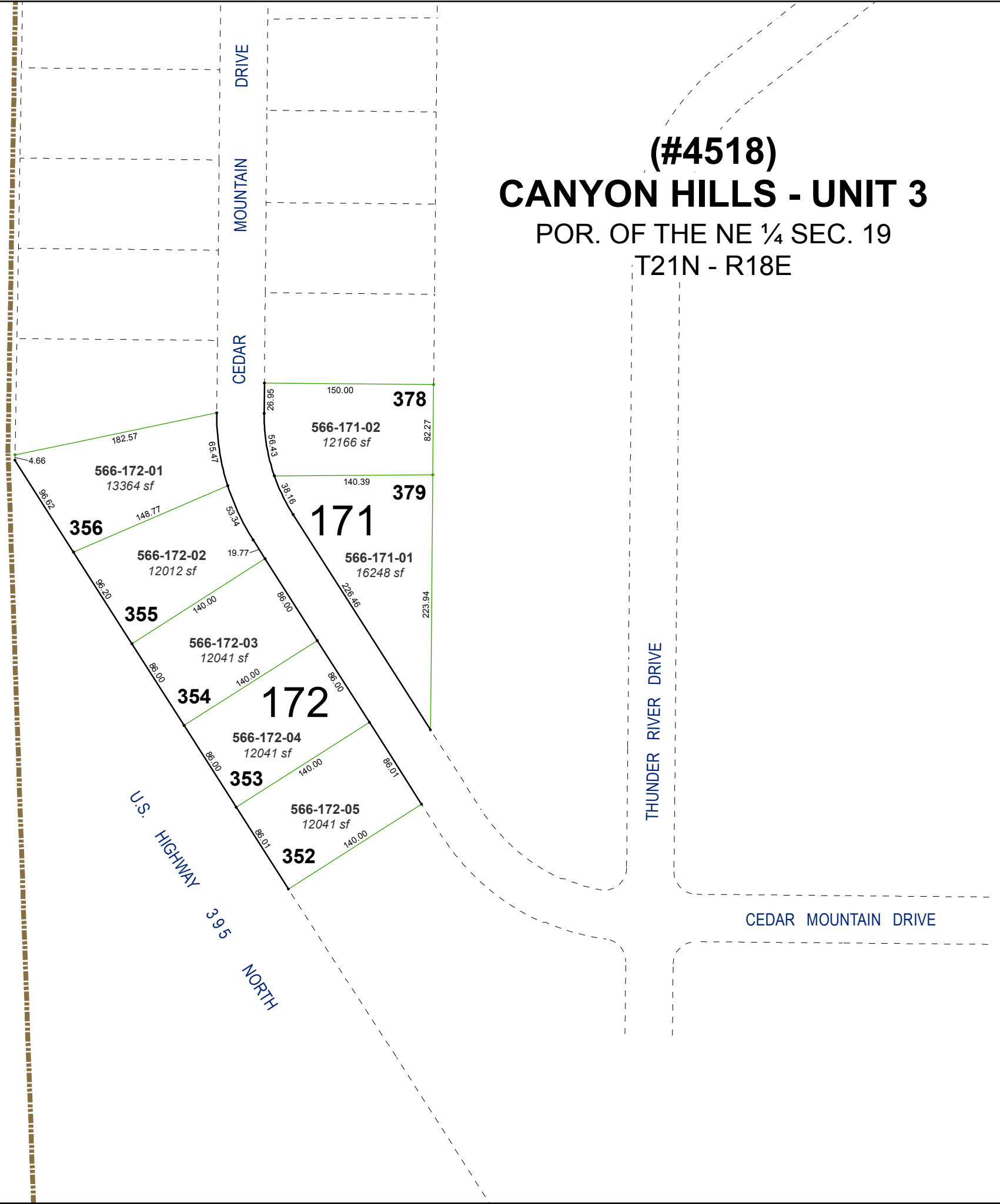


STATE OF CALIFORNIA  
(SIERRA COUNTY)

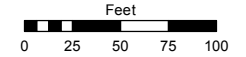


(#4518)  
**CANYON HILLS - UNIT 3**  
POR. OF THE NE ¼ SEC. 19  
T21N - R18E

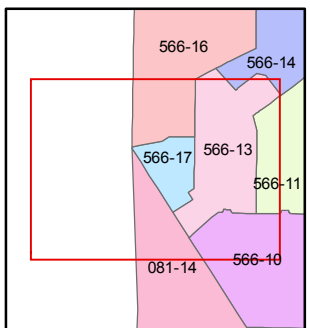
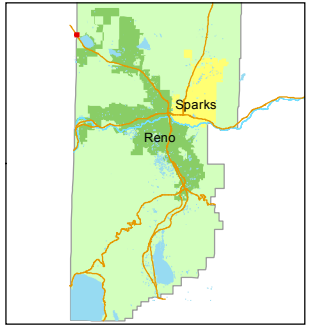
Assessor's Map Number  
**566-17**

STATE OF NEVADA  
**WASHOE COUNTY**  
ASSESSOR'S OFFICE  
Michael E. Clark, Assessor

1001 East Ninth Street  
Building D  
Reno, Nevada 89512  
(775) 328-2231



1 inch = 100 feet



created by: EMG 2/10/2015

last updated: \_\_\_\_\_

area previously shown on map(s)  
566-12

NOTE: This map was prepared for the use of the Washoe County Assessor for assessment and illustrative purposes only. It does not represent a survey of the premises. No liability is assumed as to the sufficiency or accuracy of the data delineated hereon.