

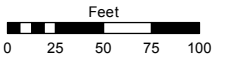
(#4425)
CANYON HILLS - UNIT 2
 PORTION OF THE NE ¼ SECTION 19
 T21N - R18E

Assessor's Map Number

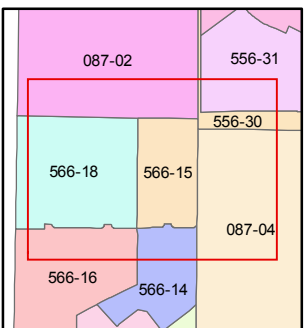
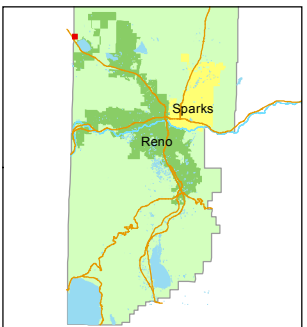
566-15

STATE OF NEVADA
WASHOE COUNTY
ASSESSOR'S OFFICE
 Michael E. Clark, Assessor

1001 East Ninth Street
 Building D
 Reno, Nevada 89512
 (775) 328-2231



1 inch = 100 feet



created by: EMG 2/10/2015

last updated: _____

area previously shown on map(s)

087-04

NOTE: This map was prepared for the use of the Washoe County Assessor for assessment and illustrative purposes only. It does not represent a survey of the premises. No liability is assumed as to the sufficiency or accuracy of the data delineated hereon.

