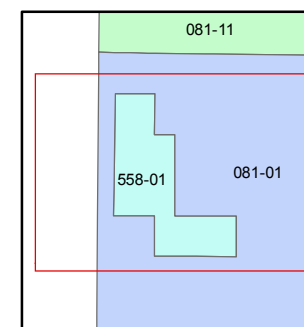
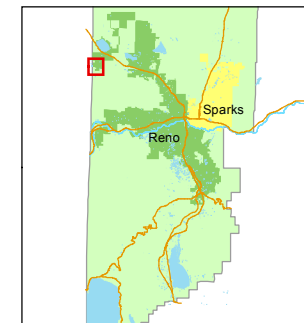


STATE OF NEVADA
WASHOE COUNTY
ASSESSOR'S OFFICE
Michael E. Clark, Assessor

1001 East Ninth Street
Building D
Reno, Nevada 89512
(775) 328-2231



1 inch = 600 feet



created by: CFB 08/04/2015

last updated: _____

area previously shown on map(s)

NOTE: This map was prepared for the use of the Washoe County Assessor for assessment and illustrative purposes only. It does not represent a survey of the premises. No liability is assumed as to the sufficiency or accuracy of the data delineated hereon.

MAP OF DIVISION INTO LARGE PARCELS (#170)

PORTIONS OF THE E 1/2 OF SEC. 6, THE SW 1/4 OF SEC. 5 & THE NW 1/4 OF SEC. 8 T20N - R18E

