

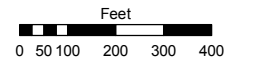
(#4354) WOODLAND VILLAGE PHASE 12

(#4257) WOODLAND VILLAGE PHASE 11 PORTIONS OF SECTIONS 9 & 16 T21N - R18E

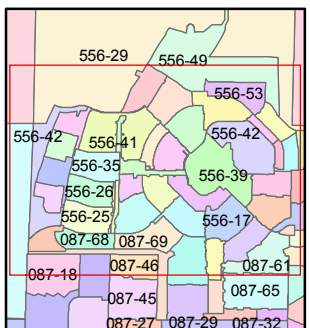
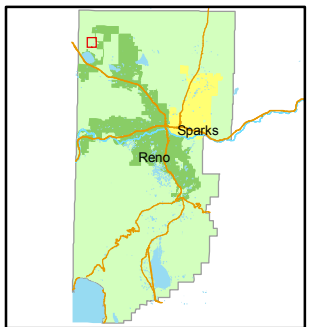
Assessor's Map Number
556-42

STATE OF NEVADA
WASHOE COUNTY
ASSESSOR'S OFFICE
Joshua G. Wilson, Assessor

1001 East Ninth Street
Building D
Reno, Nevada 89512
(775) 328-2231



1 inch = 400 feet

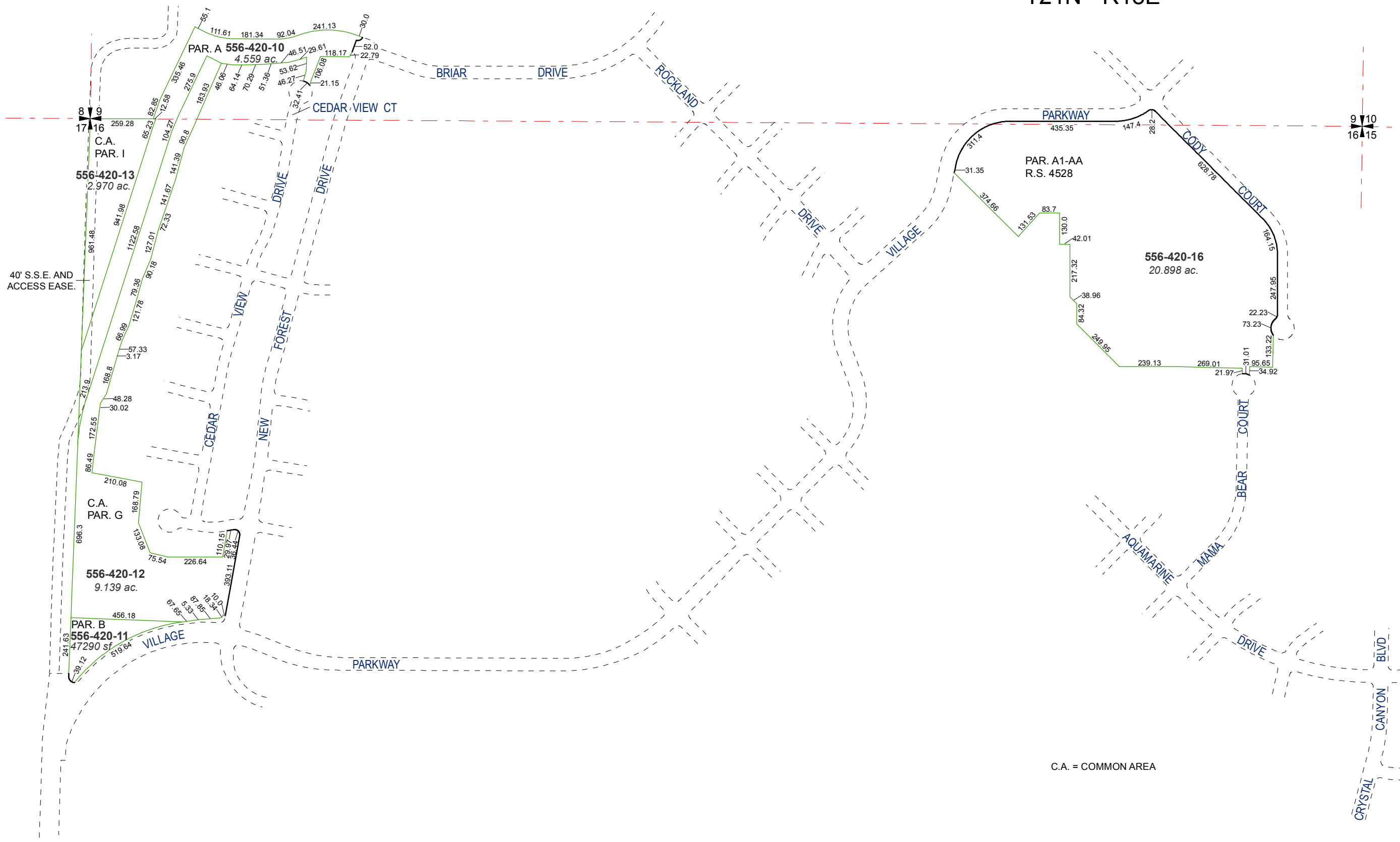


created by: NLH 5/19/2011

last updated: _____

area previously shown on map(s)

NOTE: This map was prepared for the use of the Washoe County Assessor for assessment and illustrative purposes only. It does not represent a survey of the premises. No liability is assumed as to the sufficiency or accuracy of the data delineated herein.



C.A. = COMMON AREA