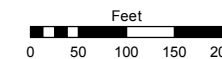
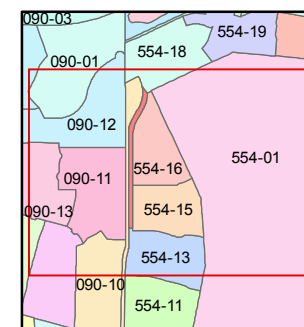
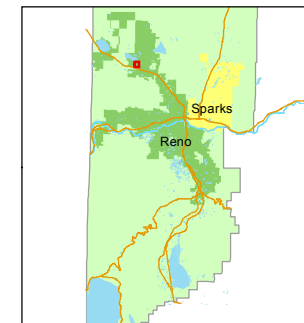


STATE OF NEVADA
WASHOE COUNTY
ASSESSOR'S OFFICE
Michael E. Clark, Assessor

1001 East Ninth Street
Building D
Reno, Nevada 89512
(775) 328-2231



1 inch = 200 feet



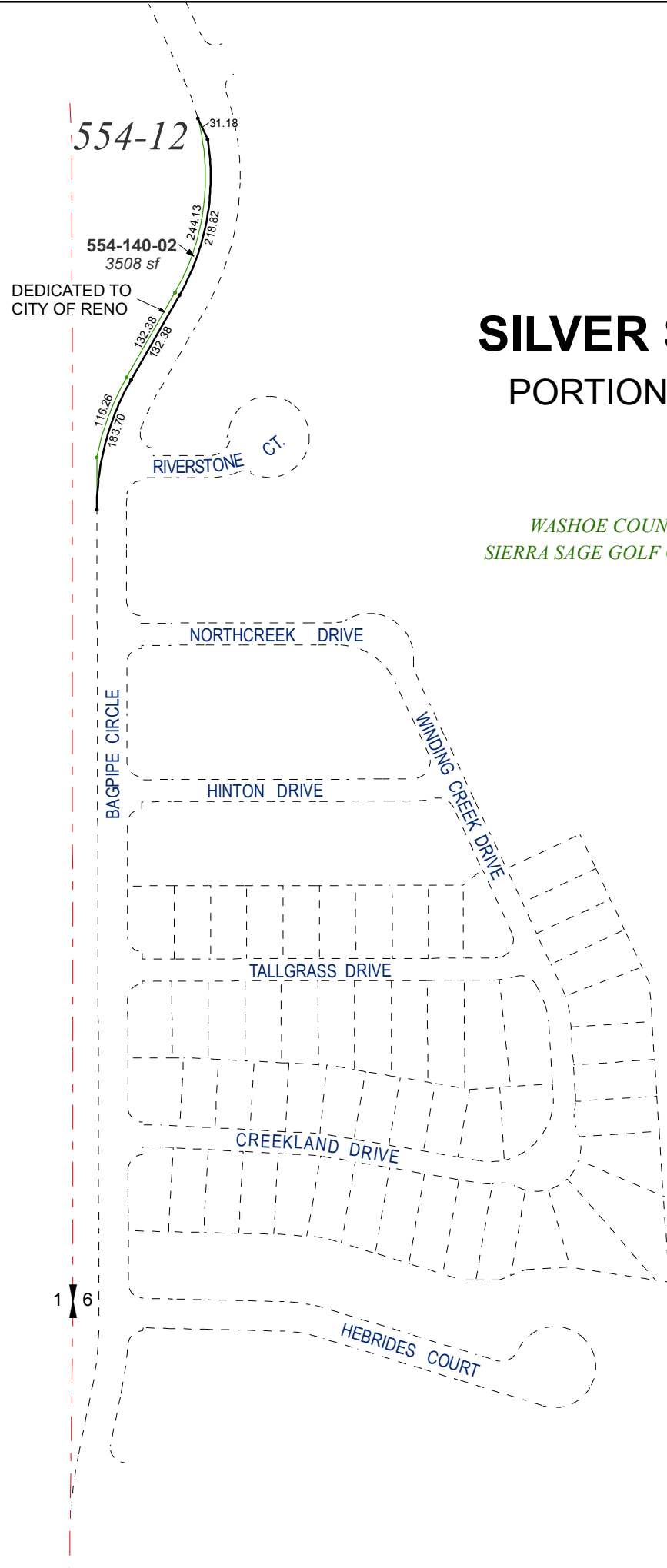
created by: EMG 1/27/2015

last updated: _____

area previously shown on map(s)

554-12

NOTE: This map was prepared for the use of the Washoe County Assessor for assessment and illustrative purposes only. It does not represent a survey of the premises. No liability is assumed as to the sufficiency or accuracy of the data delineated hereon.



(#4112)
SILVER SHORES UNIT 34
PORTION OF NW ¼ SECTION 6
T20N - R19E

WASHOE COUNTY
SIERRA SAGE GOLF COURSE

554-12
554-140-02
3508 sf
DEDICATED TO
CITY OF RENO

1 6