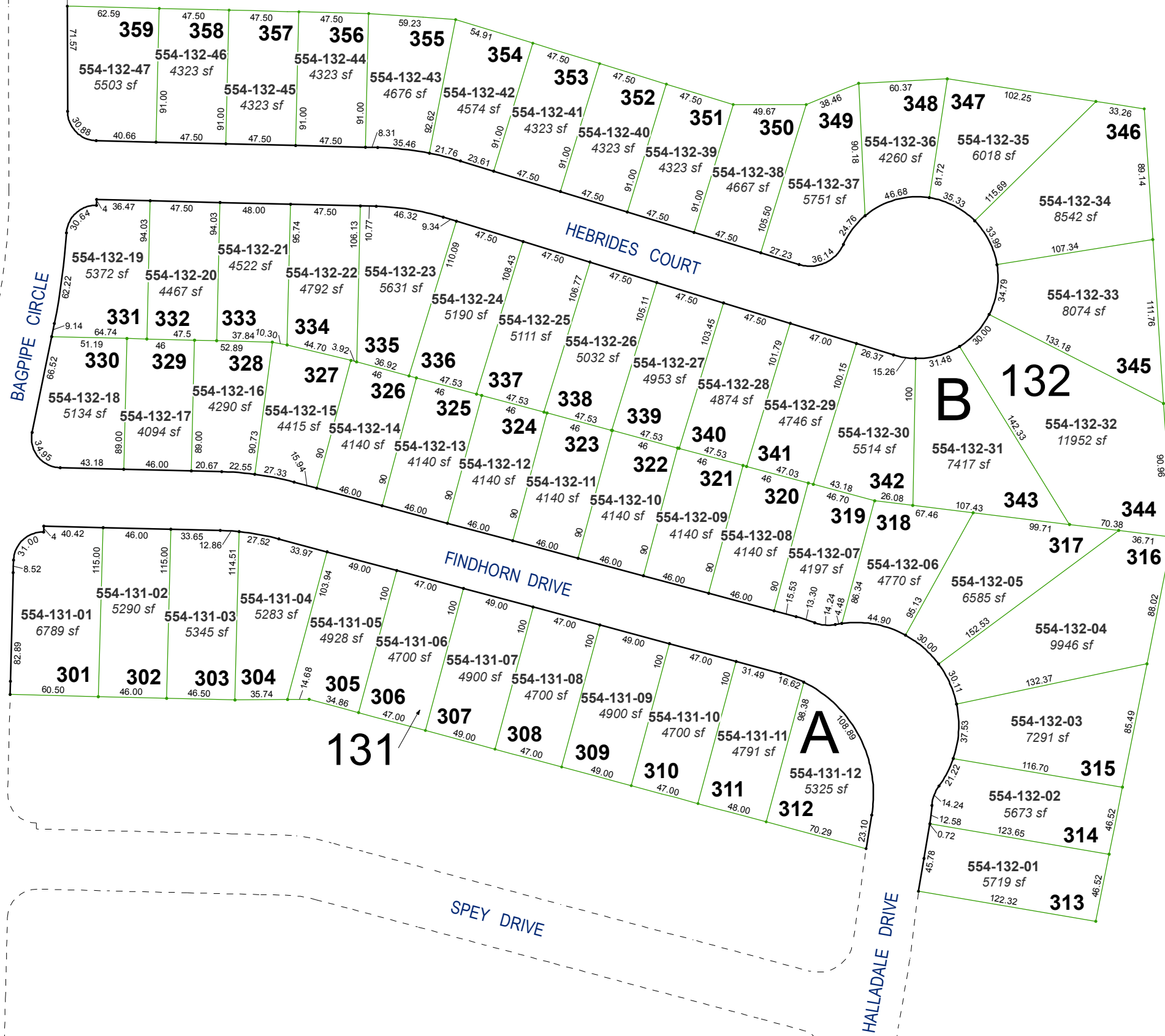


**(#4043)**  
**SILVER SHORES - UNIT 33**  
 PORTION OF THE WEST ½ SECTION 6  
 T20N - R19E



554-12 →

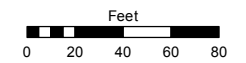
1 6

GPS PT. "FAA REA A"  
 N 14,918,063.10  
 E 2,262,317.40

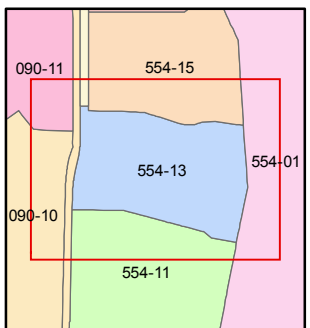
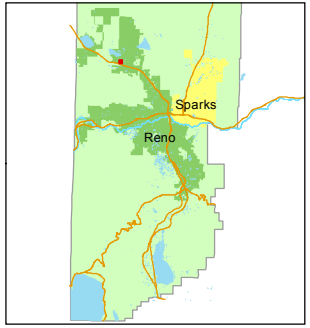
Assessor's Map Number  
**554-13**

STATE OF NEVADA  
**WASHOE COUNTY**  
 ASSESSOR'S OFFICE  
 Michael E. Clark, Assessor

1001 East Ninth Street  
 Building D  
 Reno, Nevada 89512  
 (775) 328-2231



1 inch = 80 feet



created by: EMG 1/27/2015  
 last updated: \_\_\_\_\_  
 area previously shown on map(s)  
554-12

NOTE: This map was prepared for the use of the Washoe County Assessor for assessment and illustrative purposes only. It does not represent a survey of the premises. No liability is assumed as to the sufficiency or accuracy of the data delineated hereon.