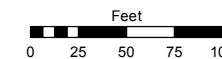


Assessor's Map Number

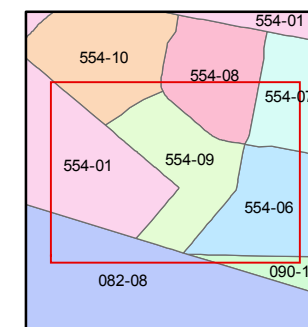
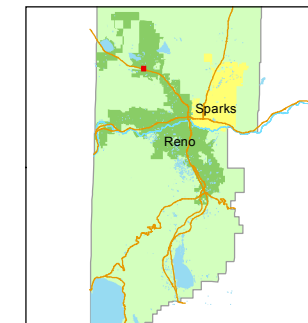
554-09

STATE OF NEVADA
WASHOE COUNTY
ASSESSOR'S OFFICE
Michael E. Clark, Assessor

1001 East Ninth Street
Building D
Reno, Nevada 89512
(775) 328-2231



1 inch = 100 feet



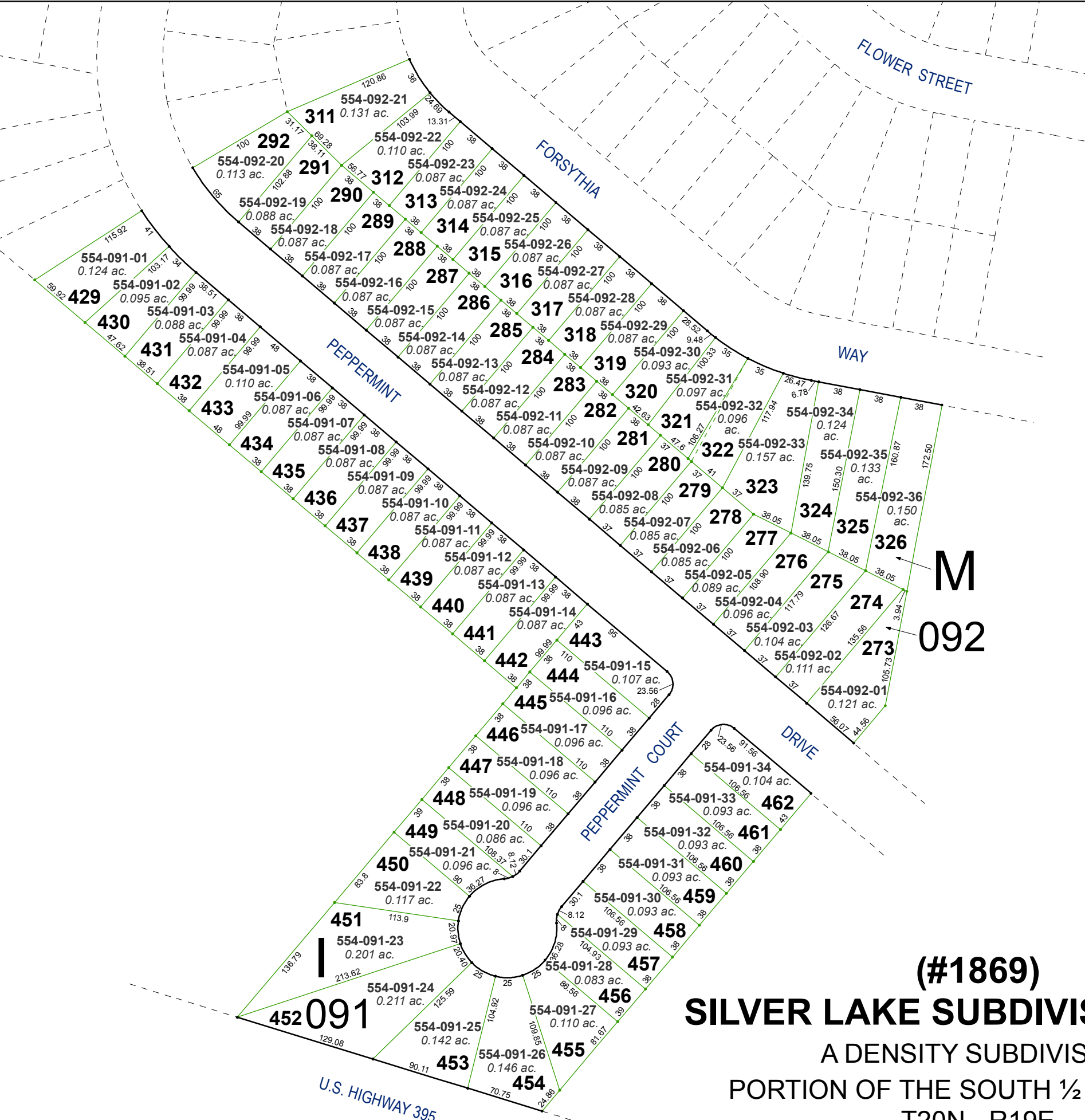
created by: EMG 1/27/2015

last updated: _____

area previously shown on map(s)

090-16, 090-18

NOTE: This map was prepared for the use of the Washoe County Assessor for assessment and illustrative purposes only. It does not represent a survey of the premises. No liability is assumed as to the sufficiency or accuracy of the data delineated hereon.



**M
092**

(#1869)
SILVER LAKE SUBDIVISION NO. 2
A DENSITY SUBDIVISION
PORTION OF THE SOUTH 1/2 SECTION 6
T20N - R19E