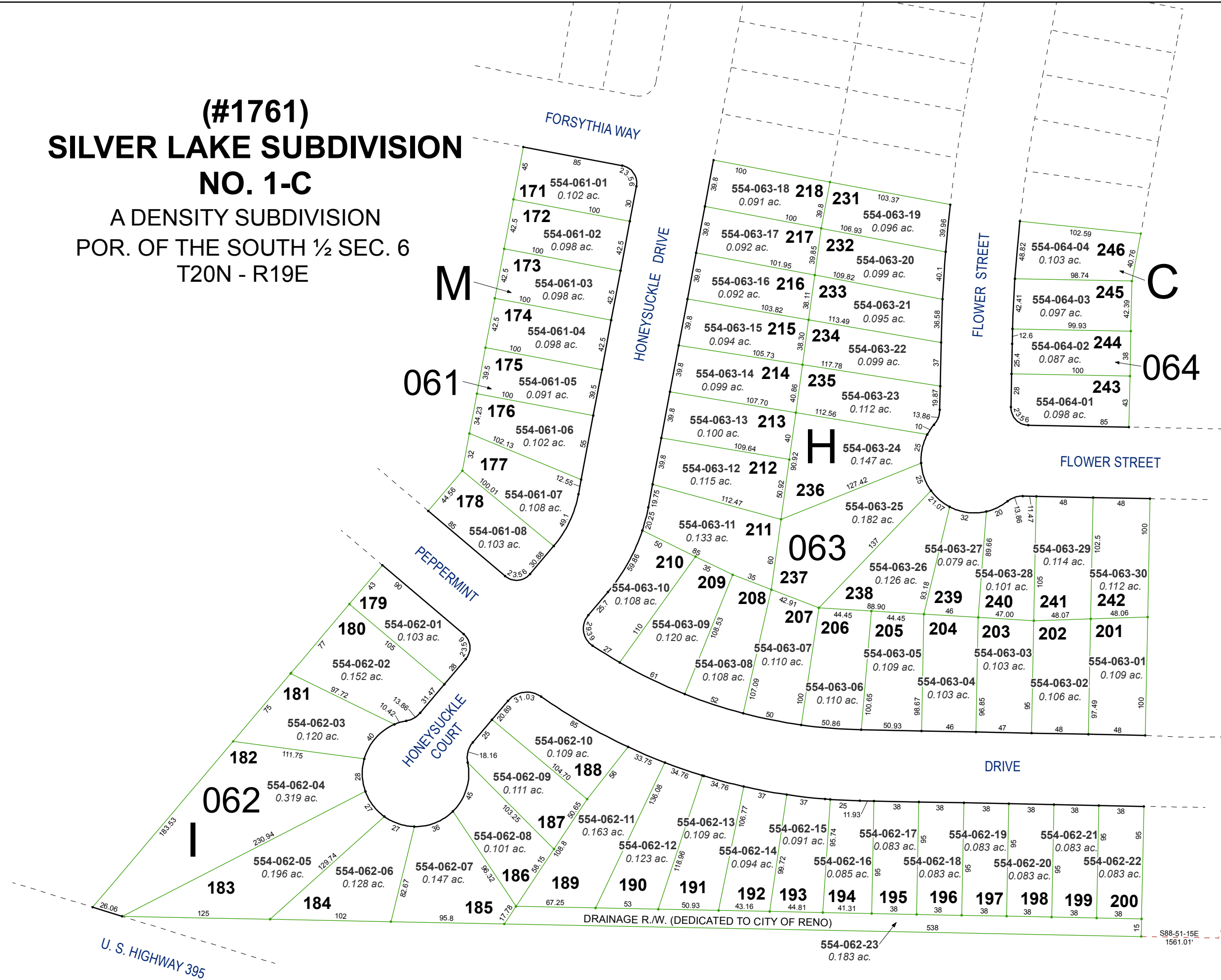


(#1761) SILVER LAKE SUBDIVISION NO. 1-C

A DENSITY SUBDIVISION
POR. OF THE SOUTH 1/2 SEC. 6
T20N - R19E

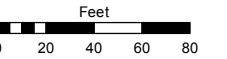


Assessor's Map Number

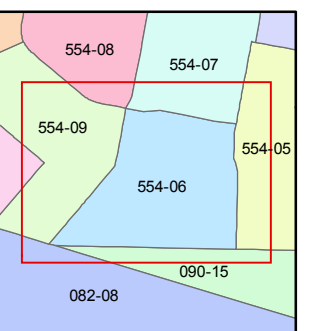
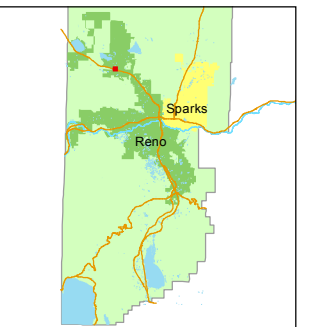
554-06

STATE OF NEVADA
WASHOE COUNTY
ASSESSOR'S OFFICE
Michael E. Clark, Assessor

1001 East Ninth Street
Building D
Reno, Nevada 89512
(775) 328-2231



1 inch = 80 feet



created by: EMG 1/27/2015

last updated: _____

area previously shown on map(s)

090-18

NOTE: This map was prepared for the use of the Washoe County Assessor for assessment and illustrative purposes only. It does not represent a survey of the premises. No liability is assumed as to the sufficiency or accuracy of the data delineated hereon.