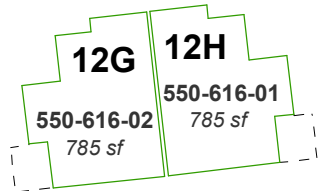
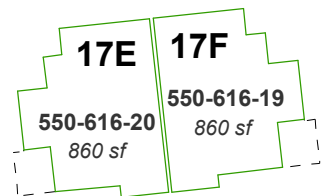


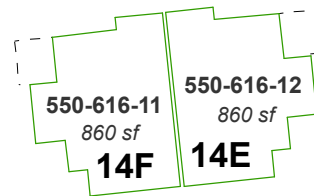
550-62-S4



550-61-S2



616



550-61-S2

550-61-S4

(#4819)

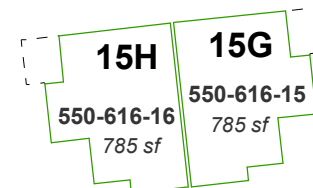
# SKY VISTA COMMONS

PORTION OF SE 1/4 SECTION 5  
T20N - R19E

## SECOND FLOOR UNITS

See Pages 550-61 and 550-61-S1 for unit dimensions.

Square footage of each unit includes all internal living space.  
It does not include the Limited Common Element (LCE).



550-61-S8

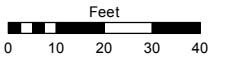
SKY VISTA PARKWAY

Assessor's Map Number

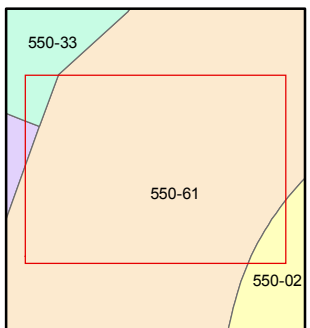
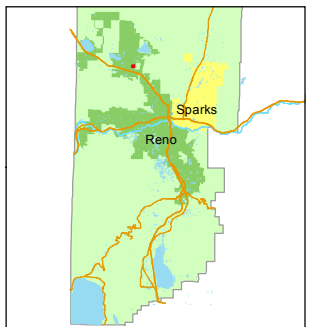
**550-61-S6**

STATE OF NEVADA  
**WASHOE COUNTY**  
ASSESSOR'S OFFICE  
Michael E. Clark, Assessor

1001 East Ninth Street  
Building D  
Reno, Nevada 89512  
(775) 328-2231



1 inch = 40 feet



created by: JMO 04/21/2016

last updated: \_\_\_\_\_

area previously shown on map(s)  
550-01, 02

NOTE: This map was prepared for the use of the Washoe County Assessor for assessment and illustrative purposes only. It does not represent a survey of the premises. No liability is assumed as to the sufficiency or accuracy of the data delineated hereon.