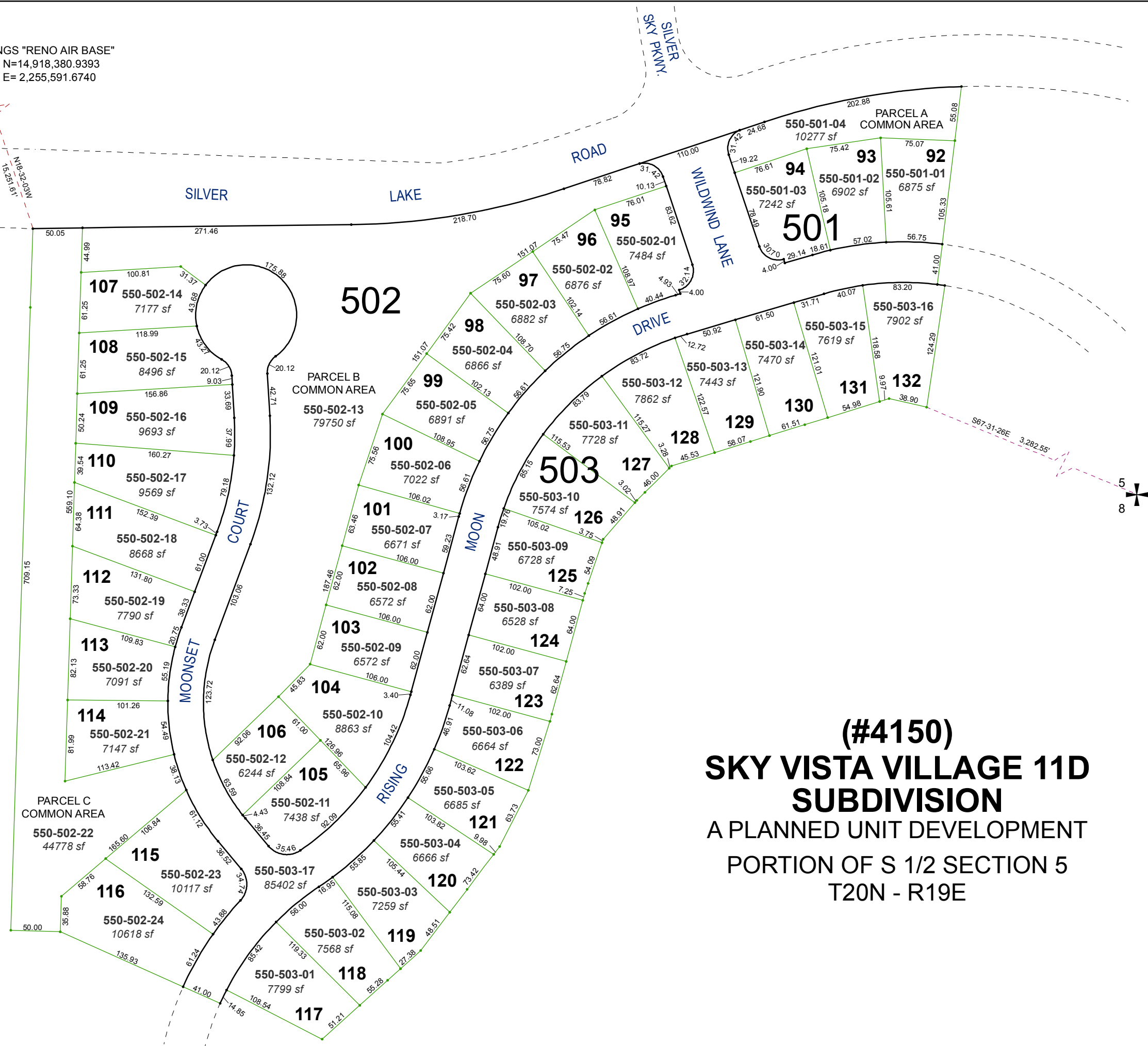


NGS "RENO AIR BASE"
N=14,918,380.9393
E= 2,255,591.6740

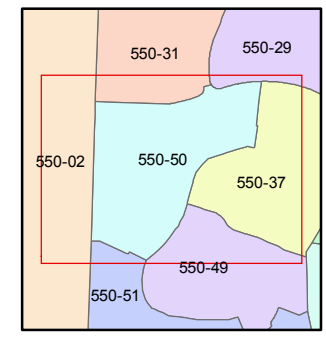
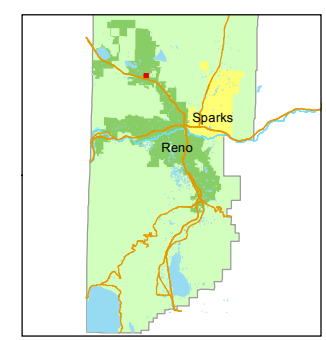
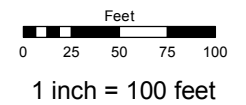


(#4150)
SKY VISTA VILLAGE 11D
SUBDIVISION
A PLANNED UNIT DEVELOPMENT
PORTION OF S 1/2 SECTION 5
T20N - R19E

Assessor's Map Number
550-50

STATE OF NEVADA
WASHOE COUNTY
ASSESSOR'S OFFICE
Michael E. Clark, Assessor

1001 East Ninth Street
Building D
Reno, Nevada 89512
(775) 328-2231



created by: JMO 04/15/2016
last updated: _____
area previously shown on map(s)
550-02

NOTE: This map was prepared for the use of the Washoe County Assessor for assessment and illustrative purposes only. It does not represent a survey of the premises. No liability is assumed as to the sufficiency or accuracy of the data delineated hereon.