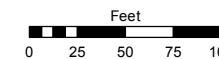


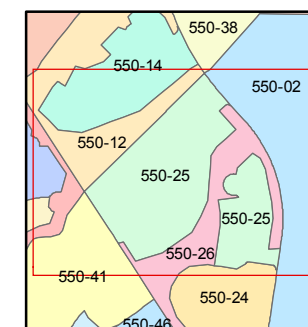
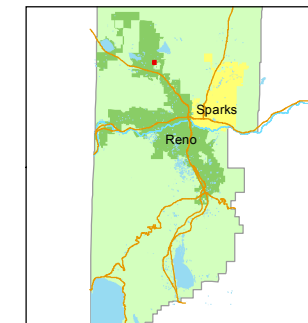
**(#3590)  
SKY VISTA VILLAGE 3  
A PORTION OF SECTION 5  
T20N - R19E**

STATE OF NEVADA  
**WASHOE COUNTY**  
ASSESSOR'S OFFICE  
Michael E. Clark, Assessor

1001 East Ninth Street  
Building D  
Reno, Nevada 89512  
(775) 328-2231



1 inch = 100 feet



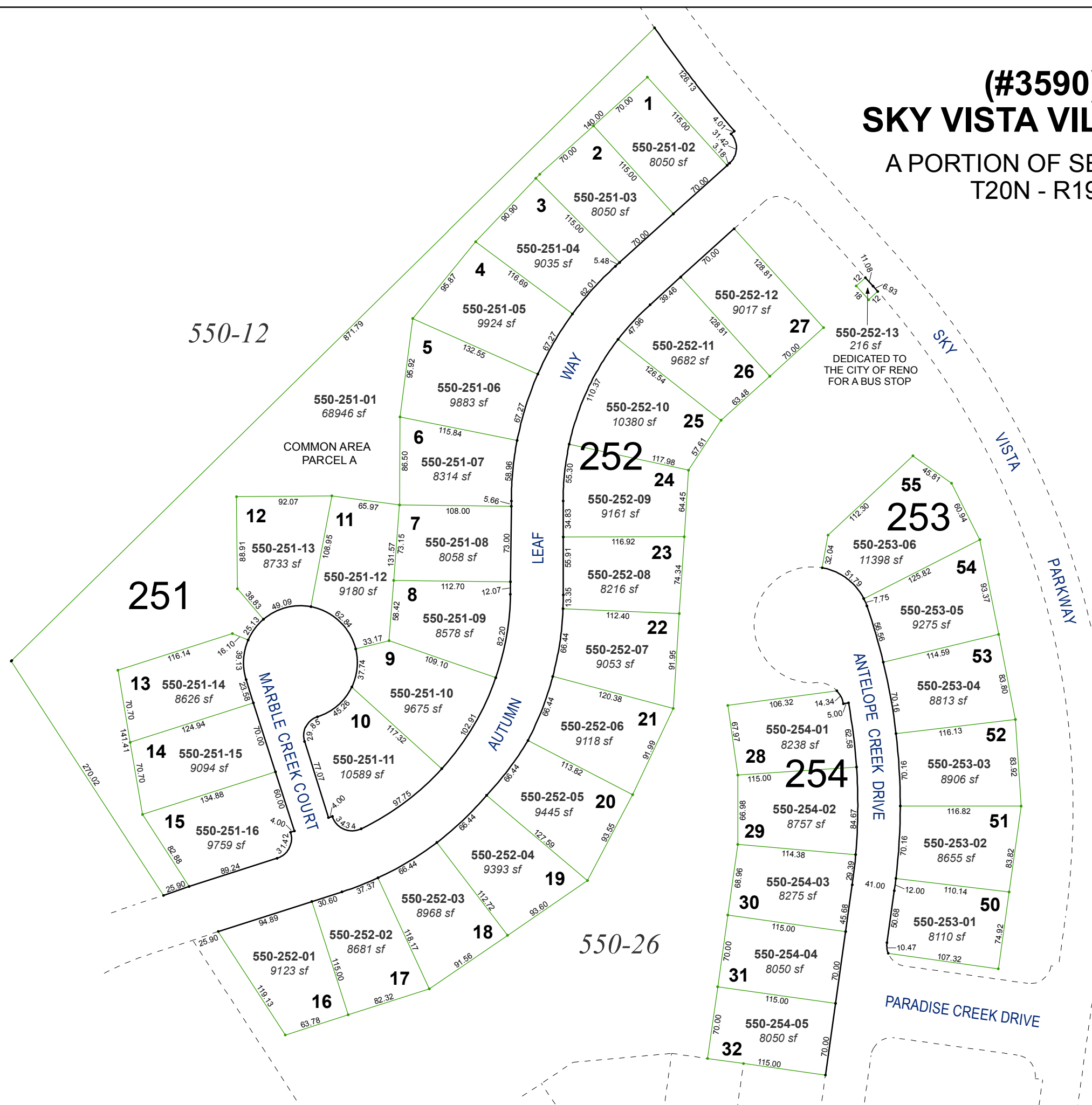
created by: KSB 8/31/2015

last updated: \_\_\_\_\_

area previously shown on map(s)

550-01

NOTE: This map was prepared for the use of the Washoe County Assessor for assessment and illustrative purposes only. It does not represent a survey of the premises. No liability is assumed as to the sufficiency or accuracy of the data delineated hereon.



550-252-13  
216 sf  
DEDICATED TO  
THE CITY OF RENO  
FOR A BUS STOP

COMMON AREA  
PARCELA