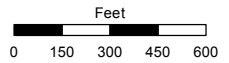


PORTION OF SECTION 5
T20N - R19E

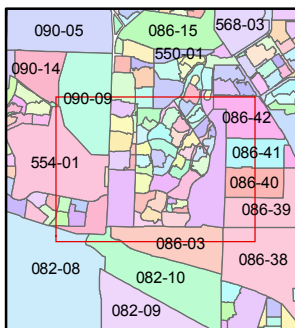
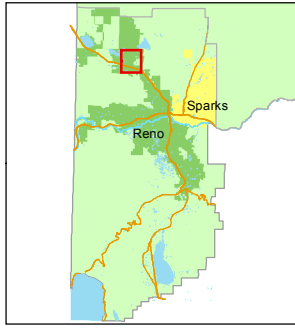
Assessor's Map Number
550-02

STATE OF NEVADA
WASHOE COUNTY
ASSESSOR'S OFFICE
Joshua G. Wilson, Assessor

1001 East Ninth Street
Building D
Reno, Nevada 89512
(775) 328-2231



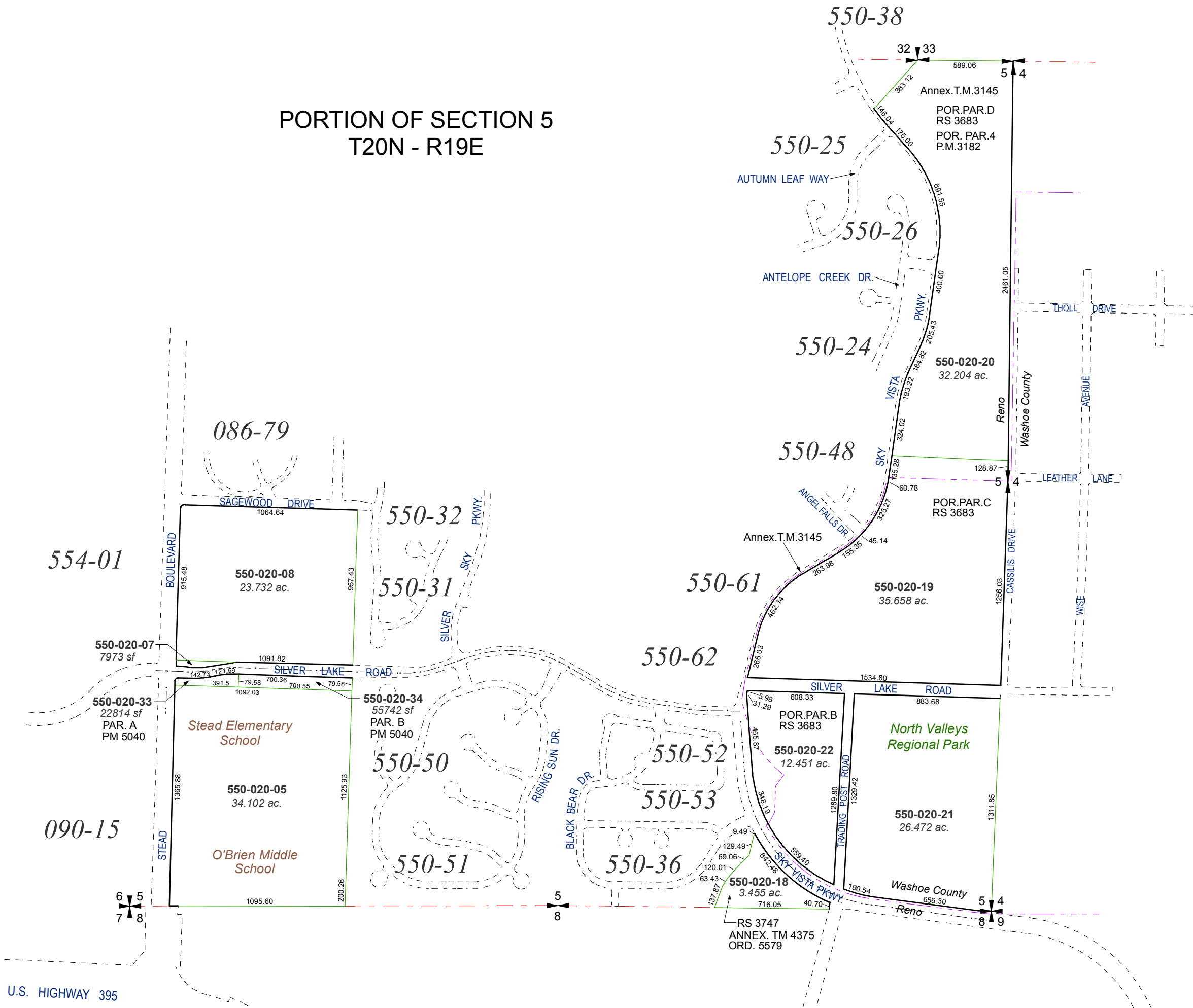
1 inch = 600 feet



created by: KSB 12/10/10
last updated: CFB 07/12/2012

area previously shown on map(s)

NOTE: This map was prepared for the use of the Washoe County Assessor for assessment and illustrative purposes only. It does not represent a survey of the premises. No liability is assumed as to the sufficiency or accuracy of the data delineated hereon.



U.S. HIGHWAY 395