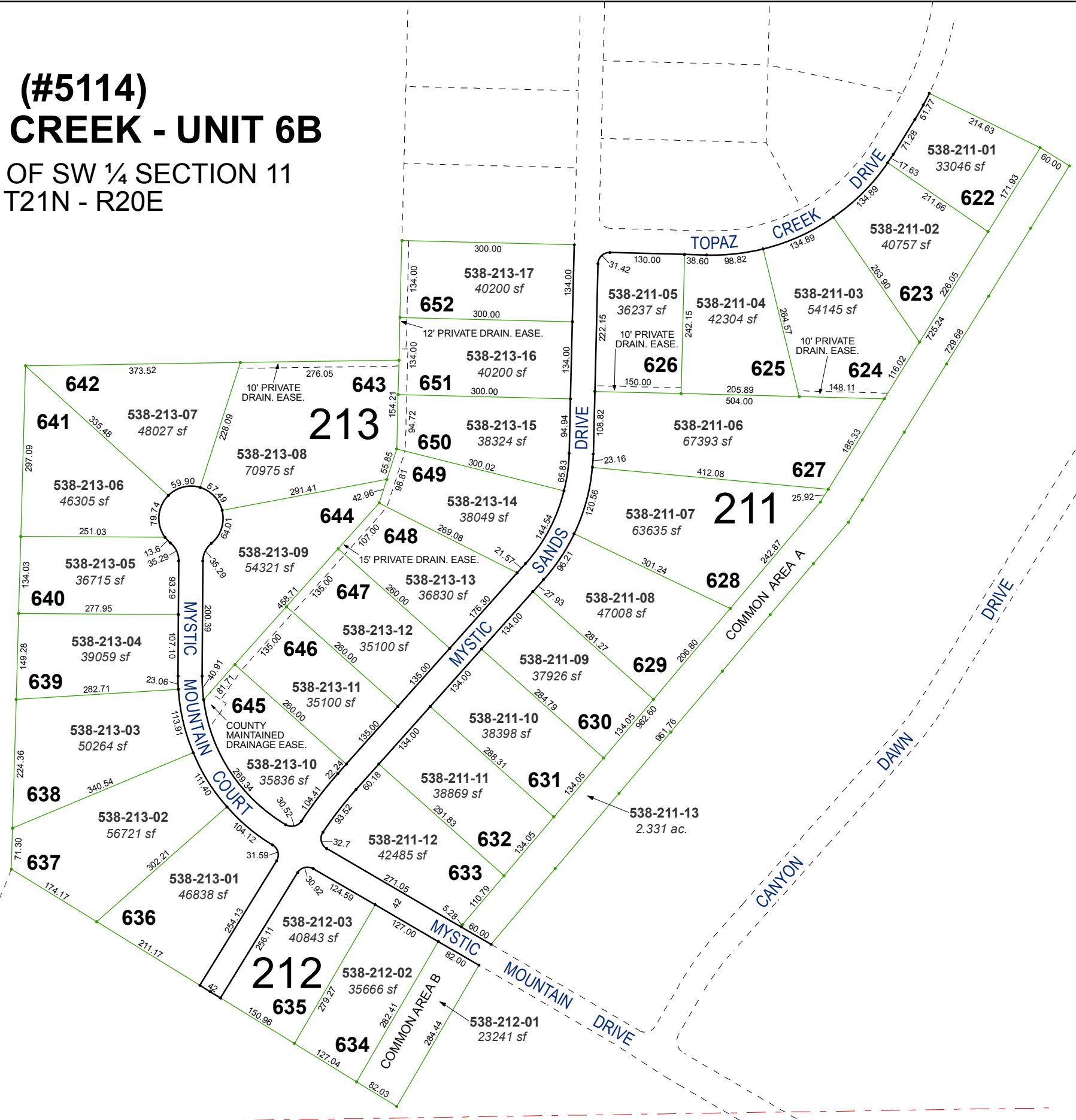


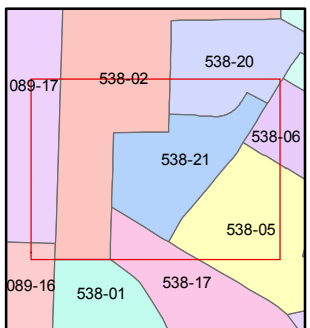
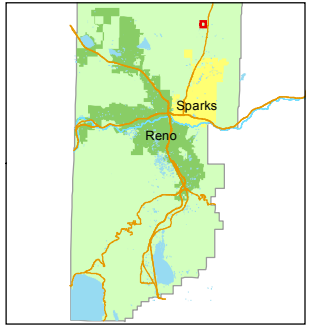
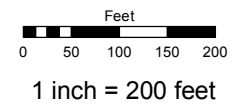
(#5114)
PEBBLE CREEK - UNIT 6B
 PORTION OF SW ¼ SECTION 11
 T21N - R20E



Assessor's Map Number
538-21

STATE OF NEVADA
WASHOE COUNTY
 ASSESSOR'S OFFICE
 Michael E. Clark, Assessor

1001 East Ninth Street
 Building D
 Reno, Nevada 89512
 (775) 328-2231



created by: KSB 3/27/2015

last updated: KSB 4/01/16

area previously shown on map(s)
538-02

NOTE: This map was prepared for the use of the Washoe County Assessor for assessment and illustrative purposes only. It does not represent a survey of the premises. No liability is assumed as to the sufficiency or accuracy of the data delineated hereon.

WASHOE CO. GPS MON. S52SM01123
 N = 14,912,547.55
 E = 2,301,050.76

10
 15
 11
 14