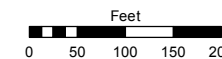
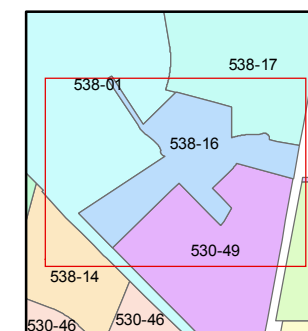
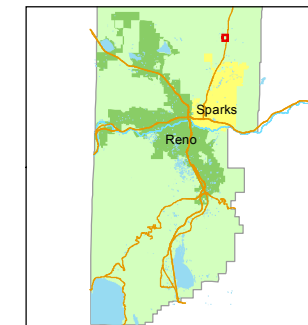


STATE OF NEVADA
WASHOE COUNTY
ASSESSOR'S OFFICE
Michael E. Clark, Assessor

1001 East Ninth Street
Building D
Reno, Nevada 89512
(775) 328-2231



1 inch = 200 feet



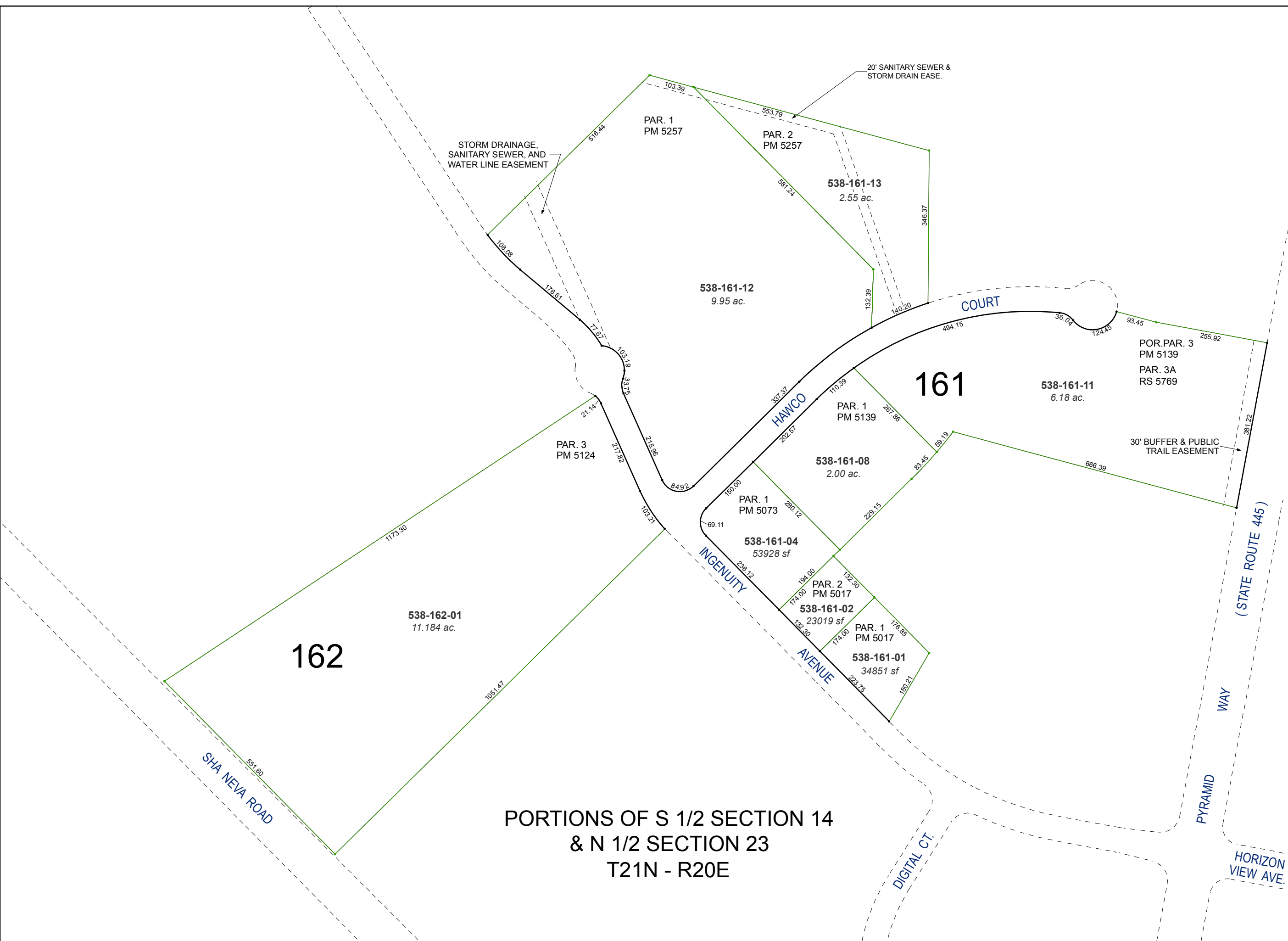
created by: KSB 2/18/2010

last updated: EMG 9/26/16 JMO 11/10/16

area previously shown on map(s)
530-28

NOTE: This map was prepared for the use of the Washoe County Assessor for assessment and illustrative purposes only. It does not represent a survey of the premises. No liability is assumed as to the sufficiency or accuracy of the data delineated hereon.

**PORTIONS OF S 1/2 SECTION 14
& N 1/2 SECTION 23
T21N - R20E**



PAR. 1
PM 5257

PAR. 2
PM 5257

538-161-13
2.55 ac.

538-161-12
9.95 ac.

161

538-161-11
6.18 ac.

POR. PAR. 3
PM 5139
PAR. 3A
RS 5769

538-161-08
2.00 ac.

PAR. 3
PM 5124

PAR. 1
PM 5073

538-161-04
53928 sf

538-161-02
23019 sf

538-161-01
34851 sf

538-162-01
11.184 ac.

162

SHA NEVA ROAD

HAWCO COURT

INGENUITY AVENUE

DIGITAL CT.

PYRAMID WAY
(STATE ROUTE 445)

HORIZON VIEW AVE.

STORM DRAINAGE,
SANITARY SEWER, AND
WATER LINE EASEMENT

20' SANITARY SEWER &
STORM DRAIN EASE.

30' BUFFER & PUBLIC
TRAIL EASEMENT