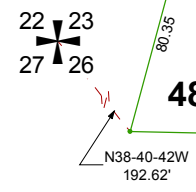
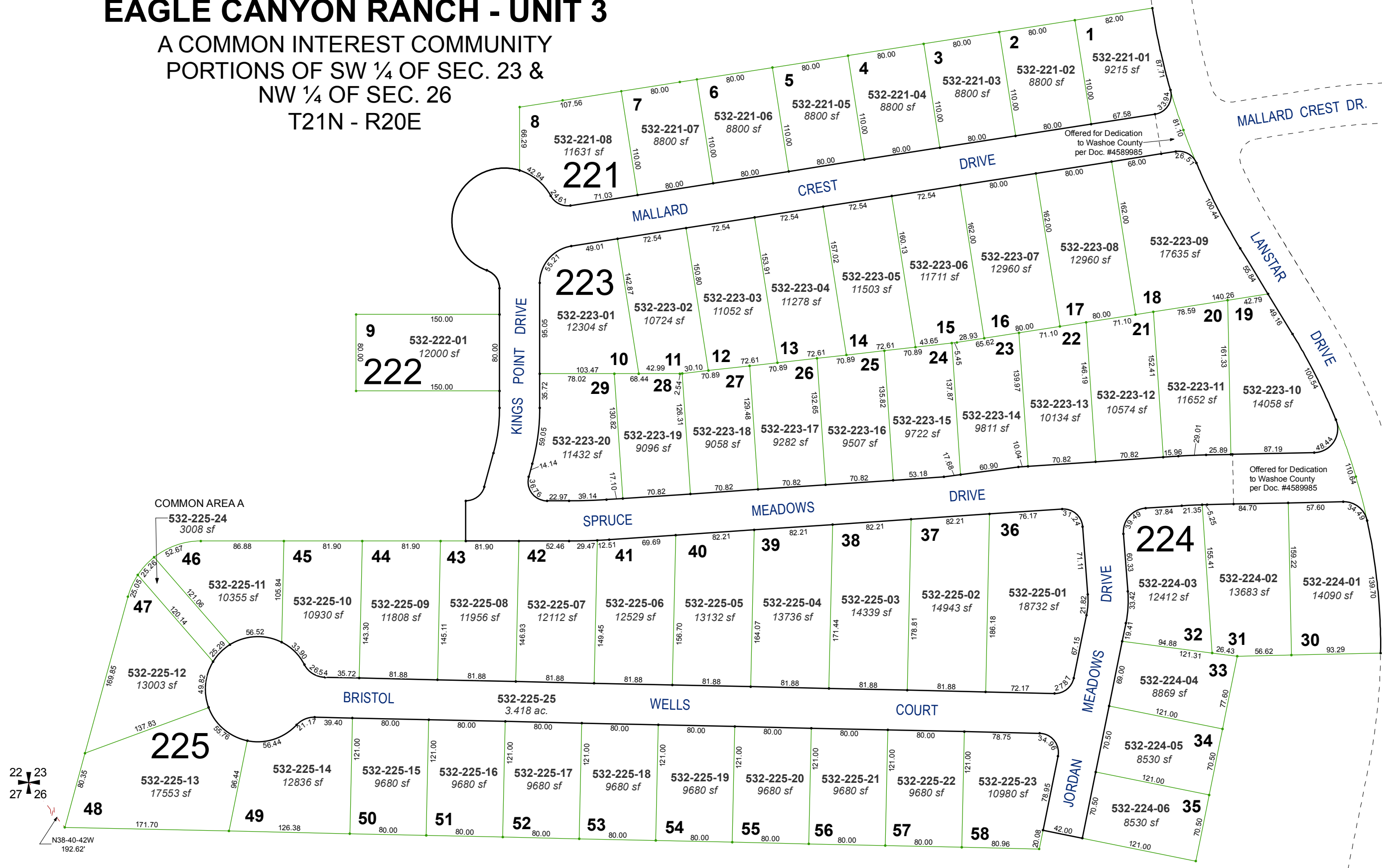


(#5209) EAGLE CANYON RANCH - UNIT 3

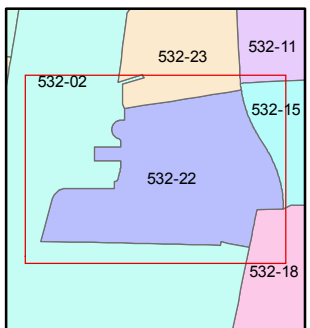
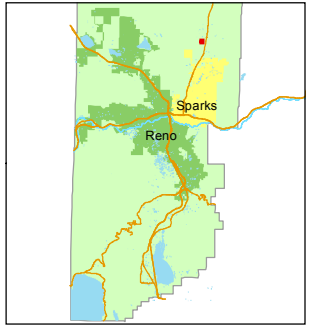
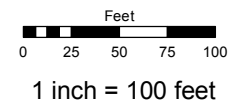
A COMMON INTEREST COMMUNITY
PORTIONS OF SW ¼ OF SEC. 23 &
NW ¼ OF SEC. 26
T21N - R20E



Assessor's Map Number
532-22

STATE OF NEVADA
WASHOE COUNTY
ASSESSOR'S OFFICE
Michael E. Clark, Assessor

1001 East Ninth Street
Building D
Reno, Nevada 89512
(775) 328-2231



created by: JMO 6/13/2017
last updated: _____
area previously shown on map(s)
532-02

NOTE: This map was prepared for the use of the Washoe County Assessor for assessment and illustrative purposes only. It does not represent a survey of the premises. No liability is assumed as to the sufficiency or accuracy of the data delineated hereon.