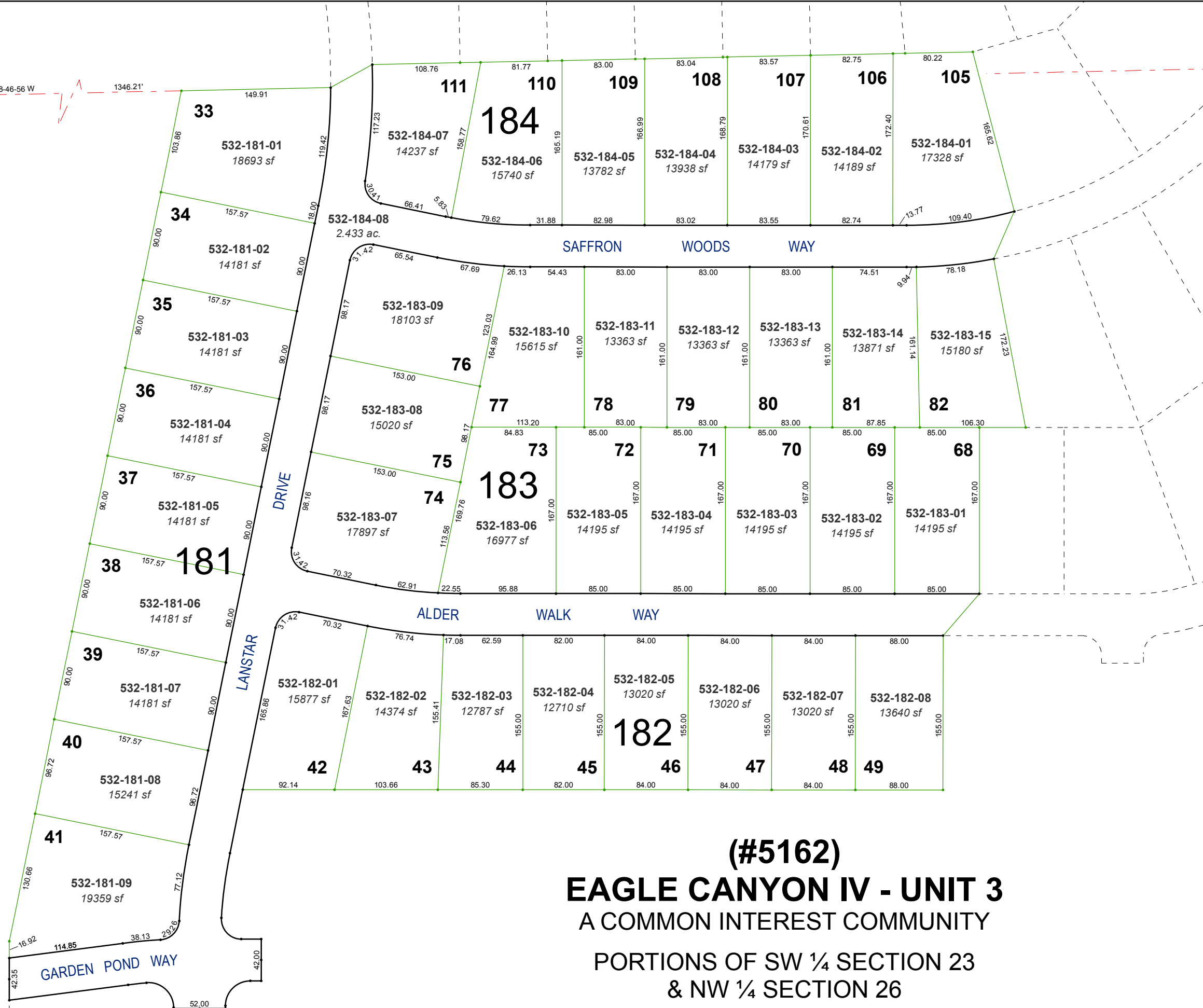


S 88-46-56 W

1346.21'



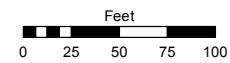
(#5162)
EAGLE CANYON IV - UNIT 3
A COMMON INTEREST COMMUNITY
PORTIONS OF SW ¼ SECTION 23
& NW ¼ SECTION 26
T21N - R20E

Assessor's Map Number

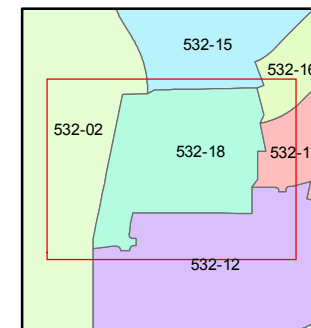
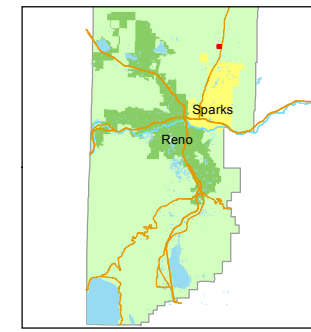
532-18

STATE OF NEVADA
WASHOE COUNTY
ASSESSOR'S OFFICE
Michael E. Clark, Assessor

1001 East Ninth Street
Building D
Reno, Nevada 89512
(775) 328-2231



1 inch = 100 feet



created by: KSB 6/02/2016

last updated: _____

area previously shown on map(s)
532-12

NOTE: This map was prepared for the use of the Washoe County Assessor for assessment and illustrative purposes only. It does not represent a survey of the premises. No liability is assumed as to the sufficiency or accuracy of the data delineated hereon.