

Assessor's Map Number

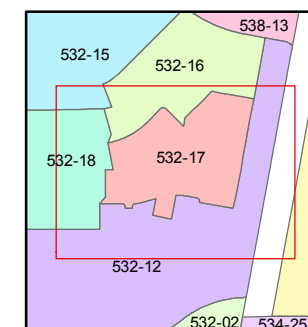
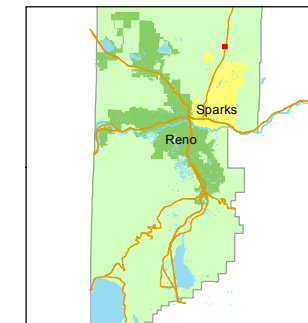
**532-17**

STATE OF NEVADA  
**WASHOE COUNTY**  
**ASSESSOR'S OFFICE**  
Michael E. Clark, Assessor

1001 East Ninth Street  
Building D  
Reno, Nevada 89512  
(775) 328-2231



1 inch = 100 feet



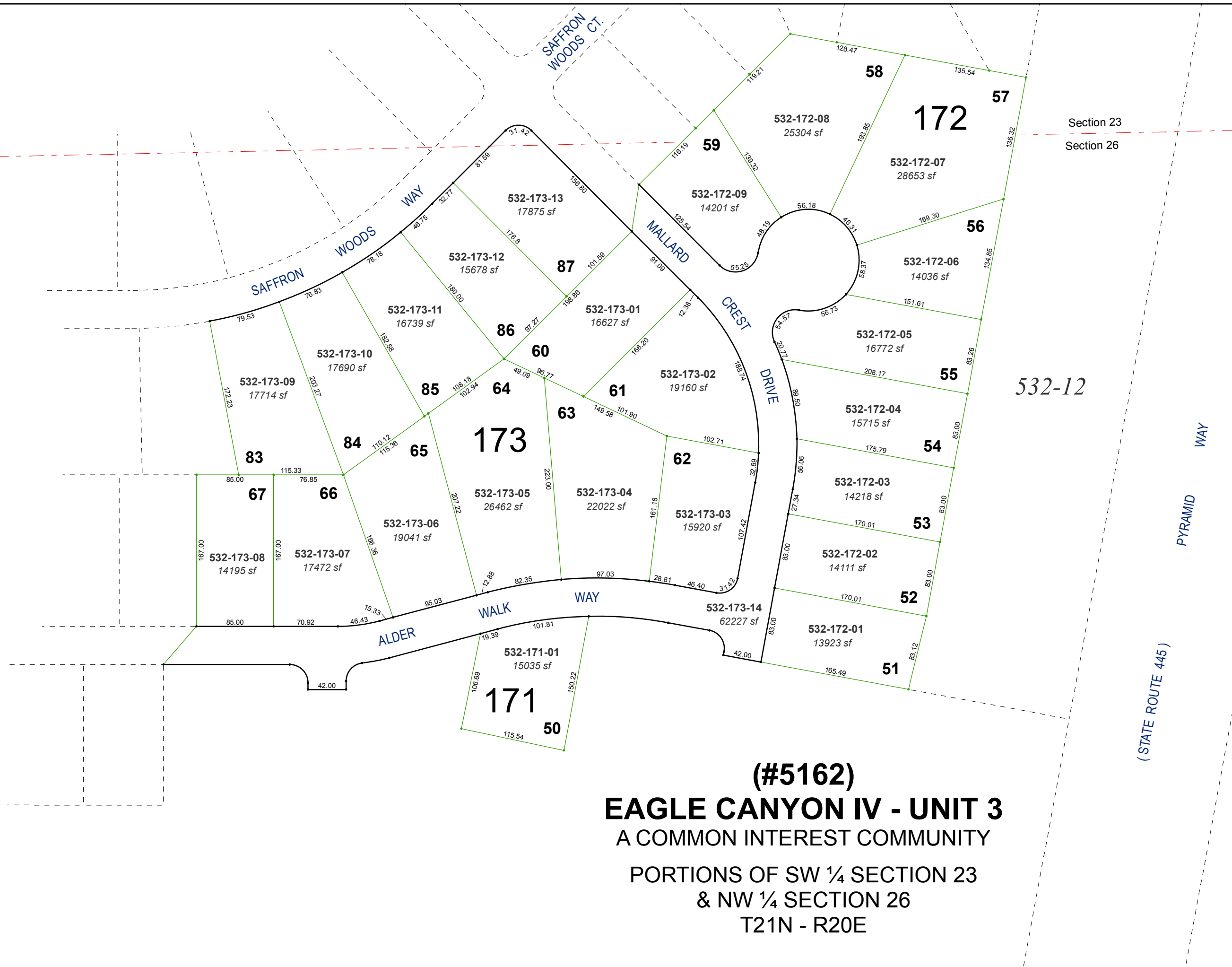
created by: KSB 6/02/2016

last updated: \_\_\_\_\_

area previously shown on map(s)

532-12

NOTE: This map was prepared for the use of the Washoe County Assessor for assessment and illustrative purposes only. It does not represent a survey of the premises. No liability is assumed as to the sufficiency or accuracy of the data delineated hereon.



**(#5162)**  
**EAGLE CANYON IV - UNIT 3**  
A COMMON INTEREST COMMUNITY  
PORTIONS OF SW ¼ SECTION 23  
& NW ¼ SECTION 26  
T21N - R20E