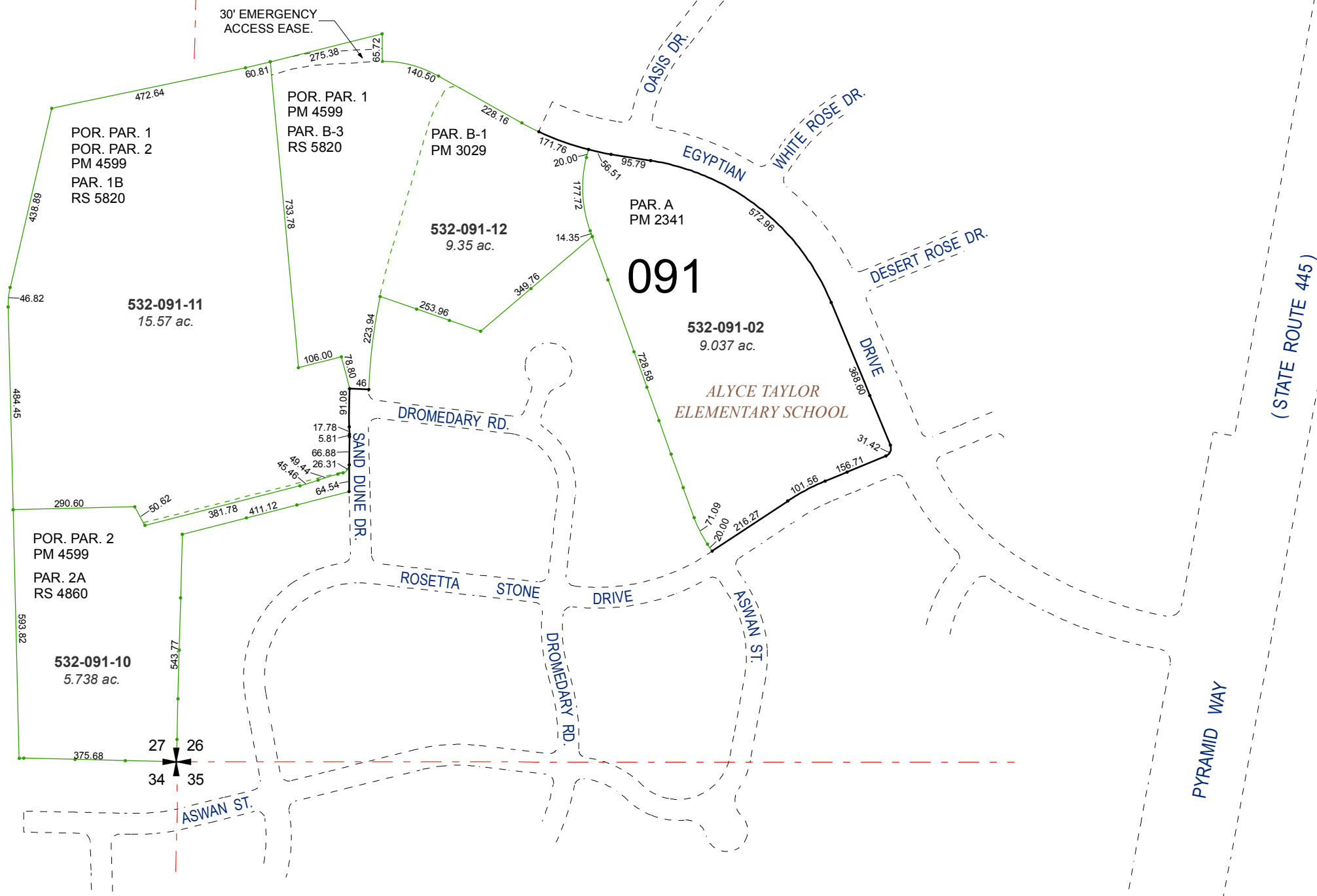


PORTION OF SW 1/4 SECTION 26 &
SE 1/4 SECTION 27
T21N - R20E

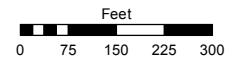


Assessor's Map Number

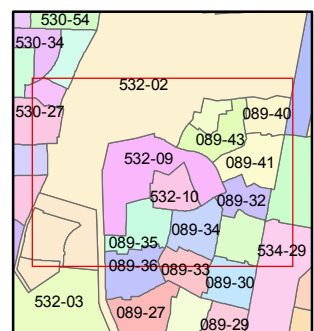
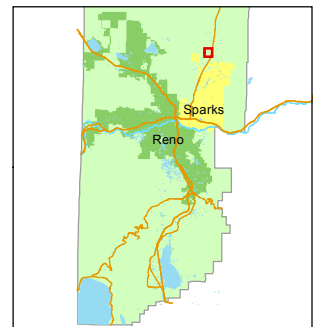
532-09

STATE OF NEVADA
WASHOE COUNTY
ASSESSOR'S OFFICE
Michael E. Clark, Assessor

1001 East Ninth Street
Building D
Reno, Nevada 89512
(775) 328-2231



1 inch = 300 feet



created by: KSB 11/01/2013

last updated: JMO 4/12/17

area previously shown on map(s)

089-16

NOTE: This map was prepared for the use of the Washoe County Assessor for assessment and illustrative purposes only. It does not represent a survey of the premises. No liability is assumed as to the sufficiency or accuracy of the data delineated hereon.