

BOOK 530

(#4485)

EAGLE CANYON IV - UNIT 1

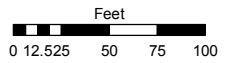
PORTIONS OF THE SE ¼ OF SEC. 22,
AND THE W ½ OF SEC. 23,
T21N - R20E

Assessor's Map Number

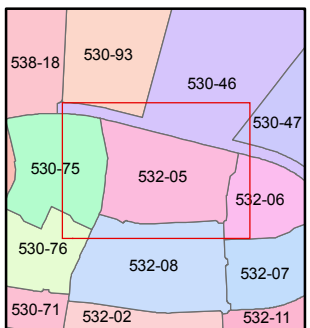
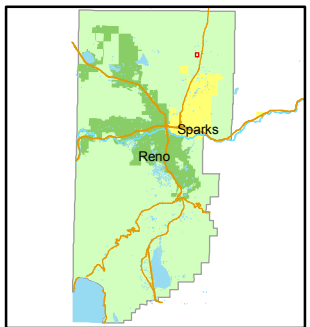
532-05

STATE OF NEVADA
WASHOE COUNTY
ASSESSOR'S OFFICE
Joshua G. Wilson, Assessor

1001 East Ninth Street
Building D
Reno, Nevada 89512
(775) 328-2231



1 inch = 100 feet



created by: NLH 6/25/2010

last updated: _____

area previously shown on map(s)

530-28

NOTE: This map was prepared for the use of the Washoe County Assessor for assessment and illustrative purposes only. It does not represent a survey of the premises. No liability is assumed as to the sufficiency or accuracy of the data delineated herein.

GPS MON. WW3029
N=14,912,547.550
E=2,301,050.760

BOOK 530



532-08